



For more information,
visit [freescale.com/
sensortoolbox](http://freescale.com/sensortoolbox)

FRDM
KL25-
A8491

Freescale and the Freescale logo are trademarks of Freescale Semiconductor, Inc., Reg. U.S. Pat. & Tm. Off. All other product or service names are the property of their respective owners.
© 2015 Freescale Semiconductor, Inc.
FRDMKL25-A8491 QRC REV 1
920-288930 REV A

FRDMKL25-A8491

FRDM
KL25-
A8491



Quick Reference Card

3-Axis Sensor Toolbox Demonstration Kit

FRDMSTBC-A8491 3-axis Sensor Toolbox board and
Freescale Freedom FRDM-KL25Z development board



Get Started

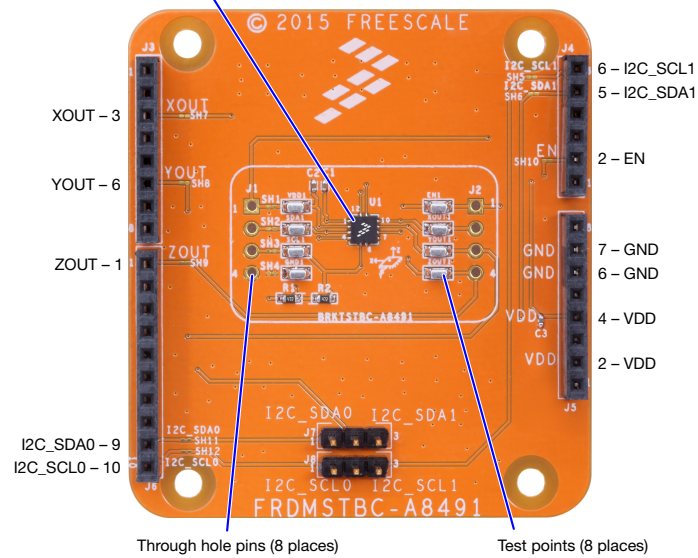
Download tools and
documentation under
Jump Start Your Design
at [freescale.com/
sensortoolbox](http://freescale.com/sensortoolbox)



FREESCALE FREEDOM PLATFORM

- 1 Verify package contents:
 - FRDM-KL25Z/FRDMSTBC-A8491 assembly
 - USB cable
- 2 Download and install the P&E OpenSDA USB drivers: pemicro.com/opensda
- 3 Plug one end of a USB cable into the SDA port on the assembly. Plug the other end of the cable into the USB port on the computer.
- 4 Download and install the latest Sensor Toolbox software at: freescale.com/sensortoolbox
- 5 Start the Sensor Toolbox software.

MMA8491Q 3-axis multifunction digital accelerometer
12 QFN (3 mm x 3 mm x 1.05 mm)



Get to Know the FRDMKL25-A8491



Learn more at freescale.com/sensortoolbox