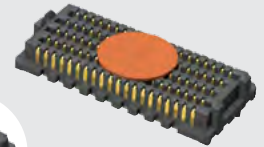


SEAM-30-03.5-S-04-2-A-K-TR



SEAM SERIES

(1.27 mm) .050"

# HIGH-SPEED/HIGH-DENSITY OPEN-PIN-FIELD

## SPECIFICATIONS

For complete specifications and recommended PCB layouts see [www.samtec.com?SEAM](http://www.samtec.com?SEAM)

**Insulator Material:**

Black LCP

**Contact Material:**

Copper Alloy

**Operating Temp Range:**

-55 °C to +125 °C

**Current Rating**

(7 mm stack height):  
1.8 A per pin  
(10 adjacent pins powered)

**Plating:**

Au or Sn over

50 μ" (1.27 μm) Ni

**Contact Resistance:**

5.5 mΩ

**Working Voltage:** 240 VAC

**RoHS Compliant:** Yes

**Lead-Free Solderable:** Yes

## RECOGNITIONS

For complete scope of recognitions see [www.samtec.com/quality](http://www.samtec.com/quality)



## STANDARDS

- PISMO 2
- VITA 47
- VITA 57.1

## PROTOCOLS

- 100 GbE
- Fibre Channel
- Rapid I/O
- PCI Express®
- SATA
- InfiniBand™

| MATED HEIGHTS   |                 |         |         |
|-----------------|-----------------|---------|---------|
| SEAM LEAD STYLE | SEAF LEAD STYLE |         |         |
|                 | -05.0           | -06.0   | -06.5   |
| -02.0           | 7 mm            | 8 mm    | 8.5 mm  |
| -03.0           | 8 mm            | 9 mm    | 9.5 mm  |
| -03.5           | 8.5 mm          | 9.5 mm  | 10 mm   |
| -06.5           | 11.5 mm         | 12.5 mm | 13 mm   |
| -07.0           | 12 mm           | 13 mm   | 13.5 mm |
| -09.0           | 14 mm           | 15 mm   | 15.5 mm |
| -11.0           | 16 mm           | 17 mm   | 17.5 mm |

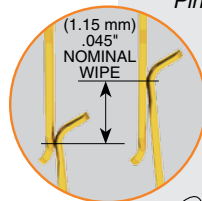
**Notes:**  
Patented

IPC-A-610F and IPC J-STD-001F Class 3 solder joint.

Some sizes, styles and options are non-standard, non-returnable.

**Mates with:**  
SEAF, SEAFP

**Standoffs:**  
JSO



Up to 500 Pins

5, 8 and 10 row footprint compatible with SamArray®. Samples recommended.

Solder charges

Low insertion/extraction forces

## HIGH-SPEED CHANNEL PERFORMANCE

SEAM/SEAF @ 10 mm Mated Stack Height

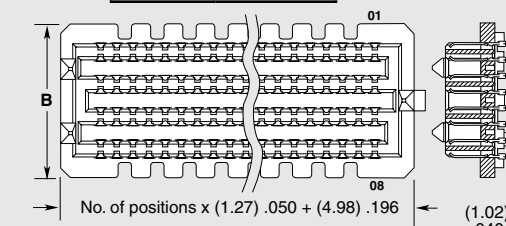
Rating based on Samtec reference channel. For full SI performance data visit [Samtec.com](http://Samtec.com) or contact [SIG@samtec.com](mailto:SIG@samtec.com)

**34**  
Gbps



| SEAM | NO. PINS PER ROW  | LEAD STYLE                    | PLATING OPTION   | NO. OF ROWS  | SOLDER TYPE   | A   | K | TR |
|------|---|-------------------------------|--|--|---|---|---|----|
|      | -10, -15, -20, -30, -40, -50<br>(-10 only available in 04 row)<br>(-15 is only available in 4 Row with -02.0 lead style and 10 row with any lead style) | Specify LEAD STYLE from chart | -L = 10 μ" (0.25 μm)<br>Gold on contact area, Matte Tin on solder tail<br><br>-S = 30 μ" (0.76 μm)<br>Gold on contact area, Matte Tin on solder tail | -04 = Four Rows (-06.5 not available)<br><br>-05 = Five Rows (-06.5 not available)<br><br>-06 = Six Rows (-06.5 not available)<br><br>-08 = Eight Rows<br><br>-10 = Ten Rows | -1 = Tin/Lead Alloy Solder Charge<br><br>-2 = Lead-Free Solder Charge | -A = Alignment Pins (Required. Arrays will not self-center on solder pads)<br><br>-K = Polyimide film Pick & Place Pad<br><br>-TR = Tape & Reel |   |    |

| NO. OF ROWS | B            |
|-------------|--------------|
| -04         | (7.06) .278  |
| -05, -06    | (9.60) .378  |
| -08         | (12.14) .478 |
| -10         | (14.68) .578 |



| LEAD STYLE | A            |
|------------|--------------|
| -02.0      | (4.60) .181  |
| -03.0      | (5.59) .220  |
| -03.5      | (6.10) .240  |
| -06.5      | (9.14) .360  |
| -07.0      | (9.60) .378  |
| -09.0      | (11.60) .457 |
| -11.0      | (13.60) .535 |

## DIFFERENTIAL

| ARRAY | PAIR COUNT | ARRAY | PAIR COUNT |
|-------|------------|-------|------------|
| 40x8  | 80         | 30x8  | 60         |
| 40x6  | 60         | 30x6  | 45         |
| 30x10 | 75         | 20x10 | 50         |
| 50x10 | 125        | 20x8  | 40         |
| 50x8  | 100        | 20x5  | 25         |
| 40x10 | 100        |       |            |

## ALSO AVAILABLE (MOQ Required)

- Up to 560 pins
- Contact Samtec.