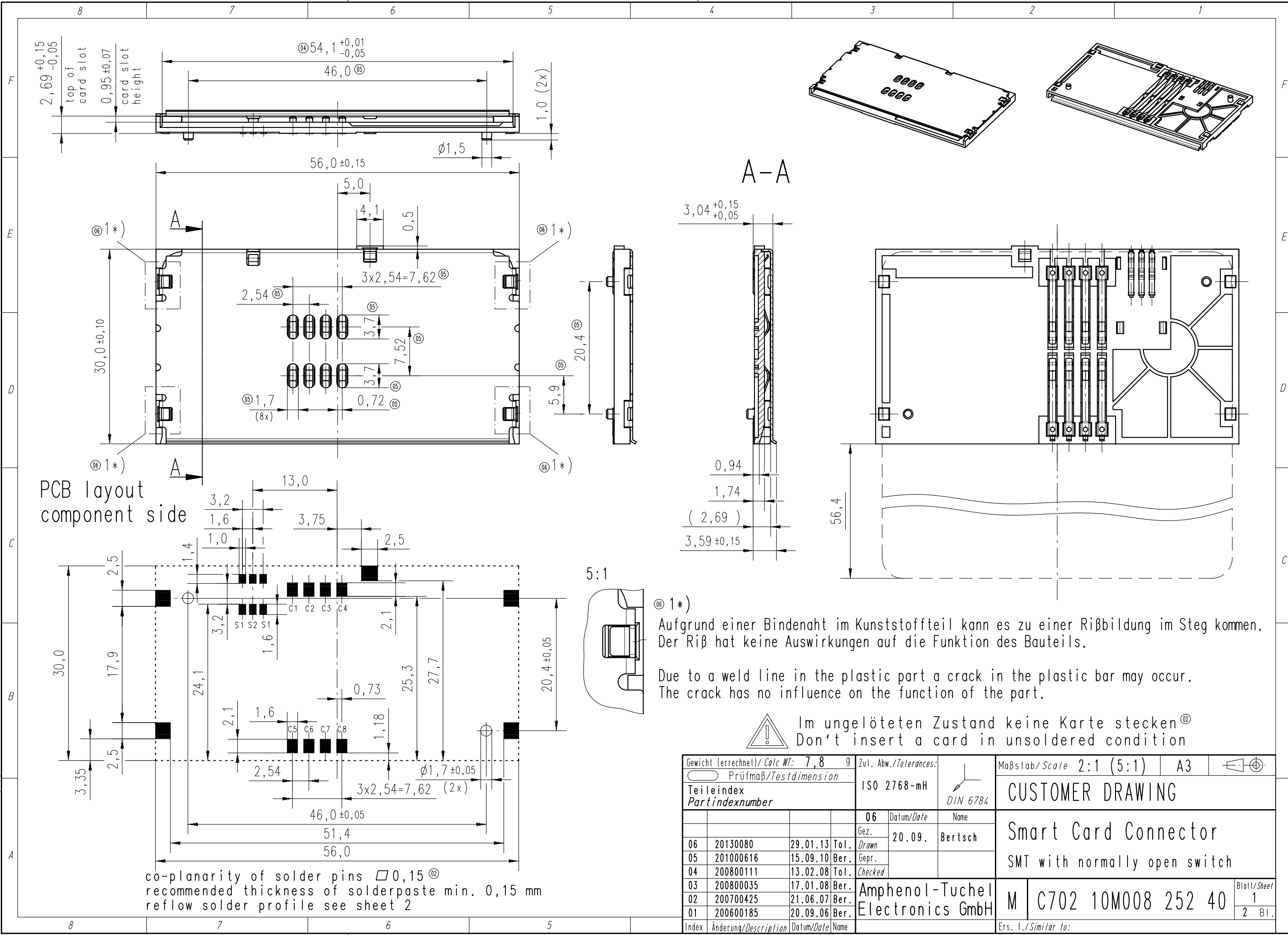


Copying of this document and giving it to others and the use or communication of the contents thereof, are forbidden without express authority. Offenders are liable to the payment of damages. All rights are reserved in the event of the grant of a patent or the registration of the utility model or design.

Weitergabe sowie Vervielfältigung dieser Unterlage, Verwertung und Mitteilung ihres Inhalts nicht gestattet, soweit nicht ausdrücklich zugestanden. Zuwiderhandlungen verpflichten zu Schadenersatz. Alle Rechte für den Fall der Patenterteilung oder Gebrauchsmuster-Eintragung vorbehalten.



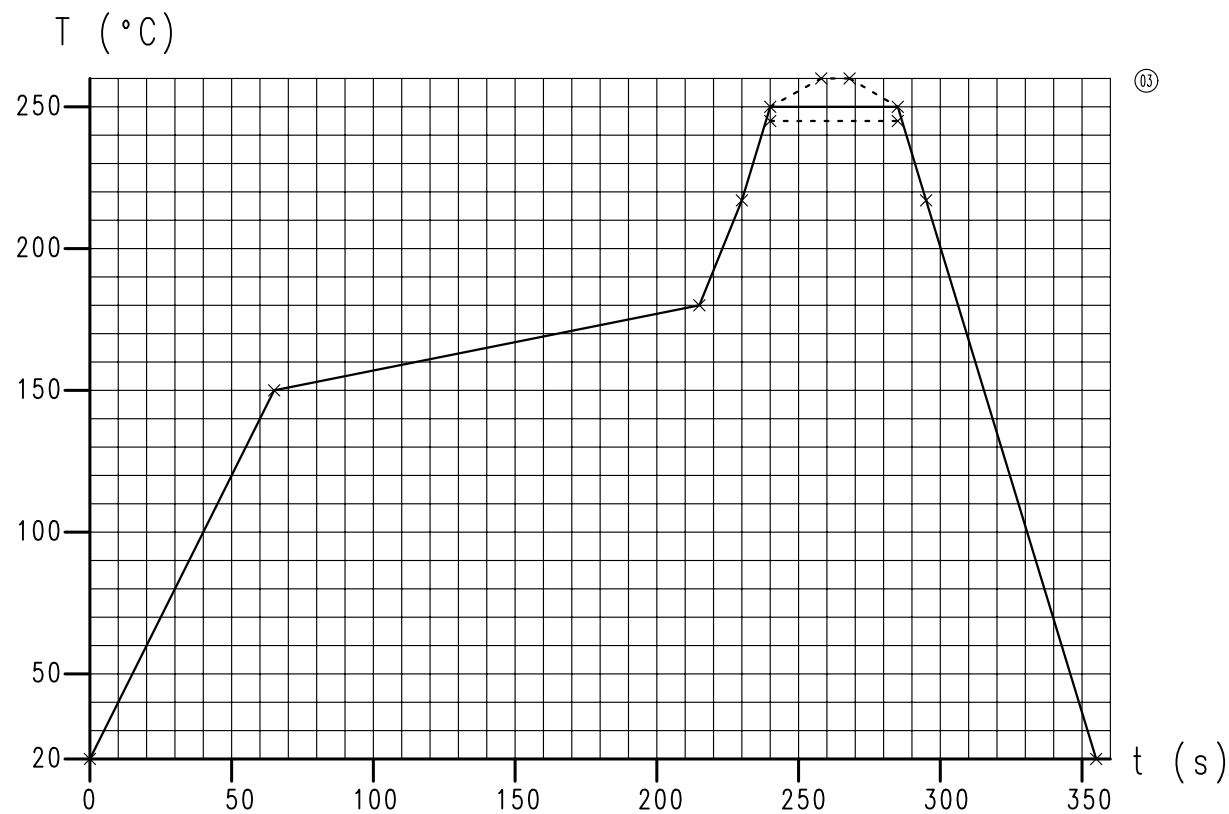
Gewicht (errechnet) / Calc WT: 7,8 9		Zul. Abw. / Tolerances:		Maßstab / Scale 2:1 (5:1)		A3	
Prüfmaß / Testdimension		ISO 2768-mH		DIN 6784		CUSTOMER DRAWING	
Teileindex / Partindexnumber		06		Datum / Date		Name	
06 20130080		29.01.13 Tol.		20.09.		Bertsch	
05 201000616		15.09.10 Ber.					
04 200800111		13.02.08 Tol.		Checked			
03 200800035		17.01.08 Ber.					
02 200700425		21.06.07 Ber.					
01 200600185		20.09.06 Ber.					
Index Änderung / Description		Datum / Date		Name		Amphenol-Tuchel Electronics GmbH	
Ers. f. / Similar to:		M		C702 10M008 252 40		Blatt / Sheet 1	
						2 Bl.	

Copying of this document and giving it to others and the use or communication of the contents thereof, are forbidden without express authority. Offenders are liable to the payment of damages. All rights are reserved in the event of the grant of a patent or the registration of the utility model or design.

Weitergabe sowie Vervielfältigung dieser Unterlage, Verwertung und Mitteilung ihres Inhalts nicht gestattet, soweit nicht ausdrücklich zugestanden. Zuwiderhandlungen verpflichten zu Schadenersatz. Alle Rechte für den Fall der Patenterteilung oder Gebrauchsmuster-Eintragung vorbehalten.

estimated temperature profile for lead free soldering^{02 03}

Sn (3,0-4,0)Ag (0,5-0,9)Cu solder alloy



Parameter	Specification
Average temperature gradient in preheating	2,5 °C/s
Preheating temperature	150 °C - 200 °C
Soak time	120 s - 180 s
Time above 217 °C	40 s - 120 s
Peak temperature in reflow	245 °C - 260 °C ⁰³
Time at peak temperature	10 s - 50 s
Temperature gradient in cooling	max -5 °C/s

Specification⁰²

DESIGN

type: push-pull, wiping contacts
normally open switch
with positioning studs

GENERAL CHARACTERISTICS

number of contacts: 8 contacts
switch: normally open (no card inserted)
card type: according to ISO 7810 / 7816
card thickness: 0,76 ±0,08 mm
termination: SMT

MATERIALS AND PLATING

insulator: LCP, black
contact plating: Au over Ni

CLIMATIC CHARACTERISTICS

operating temperature: -25 °C to +70 °C
storage temperature: -40 °C to +85 °C
soldering process: reflow soldering

ELECTRICAL CHARACTERISTICS

contact resistance: max. 100 mΩ (data contacts)
max. 1 Ω (switch)
insulation resistance: >10⁹ Ω
high voltage resistance: 500 V AC for 1 minute
rated voltage: <15 V DC
rated current: <1 A

MECHANICAL CHARACTERISTICS

card insertion force: <10 N
card extraction force: >1 N
mechanical lifetime: 100.000 mating cycles
(without corrosion stress)

PACKAGING

packaging: 32 parts per tray
24 trays per carton

Gewicht (errechnet) / Calc WT: 7,8 g		Zul. Abw. / Tolerances:		Maßstab / Scale 2:1 (5:1)		A3				
Prüfmaß / Testdimension		ISO 2768-mH		CUSTOMER DRAWING						
Teileindex / Part index number		06		Datum / Date		Name				
		Gez.		20.09.		Bertsch				
06 20130080		29.01.13		Tol.		Smart Card Connector SMT with normally open switch				
05 201000616		15.09.10		Ber.						
04 200800111		13.02.08		Tol.						
03 200800035		17.01.08		Ber.						
02 200700425		21.06.07		Ber.						
01 200600185		20.09.06		Ber.		Amphenol-Tuchel Electronics GmbH				
Index		Änderung / Description		Datum / Date		Name		M C702 10M008 252 40		Blatt / Sheet
								2 Bl.		Ers. f. / Similar to: