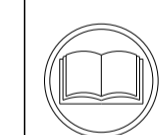


ATLANTIC VERSION TERMINATOR INTERFACE ADAPTER	PART NUMBER	REVISION	DESCRIPTION	FEED TYPE	APPLICATOR STYLE CONVERSION CHART					
					CONVERT TO	PART NUMBERS REQUIRED				
	2150382-2	H	FINE CRIMP HEIGHT ADJUST	PNEUMATIC	-	-	-	-	-	-
	2150382-5	H	FINE CRIMP HEIGHT ADJUST	SERVO LATCH PLATE <sup>4</sup>	SERVO LATCH PLATE	2119951-1	1901697-3	8-2150382-5	-	2168400-7 (QUANTITY 2)
	2150382-6	H	NON-CRIMP HEIGHT ADJUST	SERVO LATCH PLATE <sup>4</sup>	SMART APPLICATOR	2161326-1	-	8-2150382-4	-	-
	2150382-7	H	FINE CRIMP HEIGHT ADJUST	NONE	-	-	-	-	-	-
	7-2150382-7	H	CRIMP TOOLING KIT	-	-	-	-	-	-	-

APPLICATOR DATA		
CRIMP SIZE	TYPE	
WIRE .110 [2.79 mm]	F	
INSUL .180 [4.57 mm]	F	
APPL INSTRUCTIONS 408-10390		

TERMINAL DATA: TE TERMINAL		TE CRIMP SPECIFICATION	
TERMINAL NAME: RECEPTACLE, FASTON, FLAG, LIF, .250 SERIES			
WIRE STRIP LENGTH	INSULATION DIAMETER RANGE		
.198-.213 IN [5.02-5.40 mm]	∅.110-.160 IN [2.79-4.06 mm]		
TERMINAL APPLICATION SPECIFICATION	114-2079		
TERMINALS APPLIED <sup>10</sup> <sup>13</sup>			
TE TERMINAL	TE TERMINAL	TE TERMINAL	TE TERMINAL
63901-1		63009-1	63096-1
63901-2		63009-2	63096-2
63010-1		63009-3	
63010-2		63011-1	
63010-3		63011-2	

WIRE SIZE	CRIMP HEIGHT mm [INCH]	CRIMP HEIGHT REFERENCE SETTING <sup>9</sup>
14 AWG	1.85+/-0.05 [0.073+/-0.002]	3.6
16 AWG	1.62+/-0.05 [0.064+/-0.002]	6.1
18 AWG	1.47+/-0.05 [0.058+/-0.002]	7.7



- <sup>1</sup> RECOMMENDED SPARE PARTS
- <sup>2</sup> GREASE BEARING SURFACES LIGHTLY
- 3. LUBRICATE DAILY PER THE APPLICATOR INSTRUCTION SHEET SUPPLIED WITH THE APPLICATOR.
- <sup>4</sup> APPLICATOR SPECIFIC DATA TO BE ENTERED INTO BLANK MEMORY CHIP AT ASSEMBLY. SEE BELOW FOR PART NUMBER:  
 PNEUMATIC FEED WITH "SMART APPLICATOR" CONVERSION: 8-2150382-4  
 SERVO FEED WITH "FINE CRIMP HEIGHT ADJUST": 8-2150382-5  
 SERVO FEED WITH "NON-CRIMP HEIGHT ADJUST": 8-2150382-6
- 5. ADJUSTMENT OF THE STRIPPER MAY BE REQUIRED WHEN MOVING THE APPLICATOR BETWEEN BENCH AND LEADMAKER APPLICATIONS.
- <sup>6</sup> APPLY PART NUMBER 1-23419-5 LOCTITE TO THREADS OF ITEMS 62 & 242. FOR -6 ONLY APPLY PART NUMBER 1-23419-5 LOCTITE TO THREADS OF ITEMS 37 & 242.
- <sup>7</sup> GREASE THREADS, GROOVE AND O-RING ON ITEMS 35 & 252.
- <sup>8</sup> MAGNET, ITEM 166 MUST BE ORIENTED CORRECTLY IN ORDER TO PROPERLY ACTUATE THE COUNTER.
- <sup>9</sup> CRIMP HEIGHT REFERENCE SETTING WAS THE SETTING USED WHEN THE APPLICATOR WAS QUALIFIED AT THE FACTORY. ADJUSTMENT MAY BE NECESSARY WHEN RUNNING APPLICATOR IN THE FIELD.
- <sup>10</sup> TERMINAL PITCH IS NOT COMPATIBLE WITH MECHANICAL FEED.
- <sup>11</sup> THE RECOMMENDED SET-UP FOR END FEED APPLICATORS IS POST-FEED WITH ITEM 2119653-1. THE APPLICATOR CAN BE CONFIGURED FOR PRE-FEED WITH ITEM 2119652-1 BUT MAY ENCOUNTER PROBLEMS WITH SOME APPLICATIONS. FEED ISSUES OR TERMINAL JAMMING MAY OCCUR IN THE PRE-FEED CONFIGURATION.
- <sup>12</sup> WHEN ASSEMBLING -6 NON-CRIMP HEIGHT ADJUST APPLICATOR USE SHIM PACK 2119957-2 TO ALIGN APPLICATOR'S MAXIMUM WIRE CRIMP HEIGHT AT NORMAL TERMINATOR SHUT HEIGHT
- <sup>13</sup> TERMINAL LUBRICATOR IS RECOMMENDED.

- <sup>4</sup> RIGHT HAND ORIENTED FLAG TERMINALS - WHEN RUNNING THESE TERMINALS, USE ITEM 1 WIRE CRIMPER WITH ITEM 14 BLOCK SUPPORT LOCATED UNDER THE TERMINAL FLAG.
- <sup>5</sup> LEFT HAND ORIENTED FLAG TERMINALS - WHEN RUNNING THESE TERMINALS, USE ITEM 261 WIRE CRIMPER WITH ITEM 14 BLOCK SUPPORT FLIPPED OVER AND LOCATED UNDER THE TERMINAL FLAG.

**\*WARNING**  
 ON INSTALLATION, SET WIRE DISC, ITEM 40 TO LARGEST WIRE SIZE SETTING. USE OF SETTINGS BELOW MINIMUM REQUIRED CRIMP HEIGHT SETTING WILL CAUSE DAMAGE TO CRIMP TOOLING.

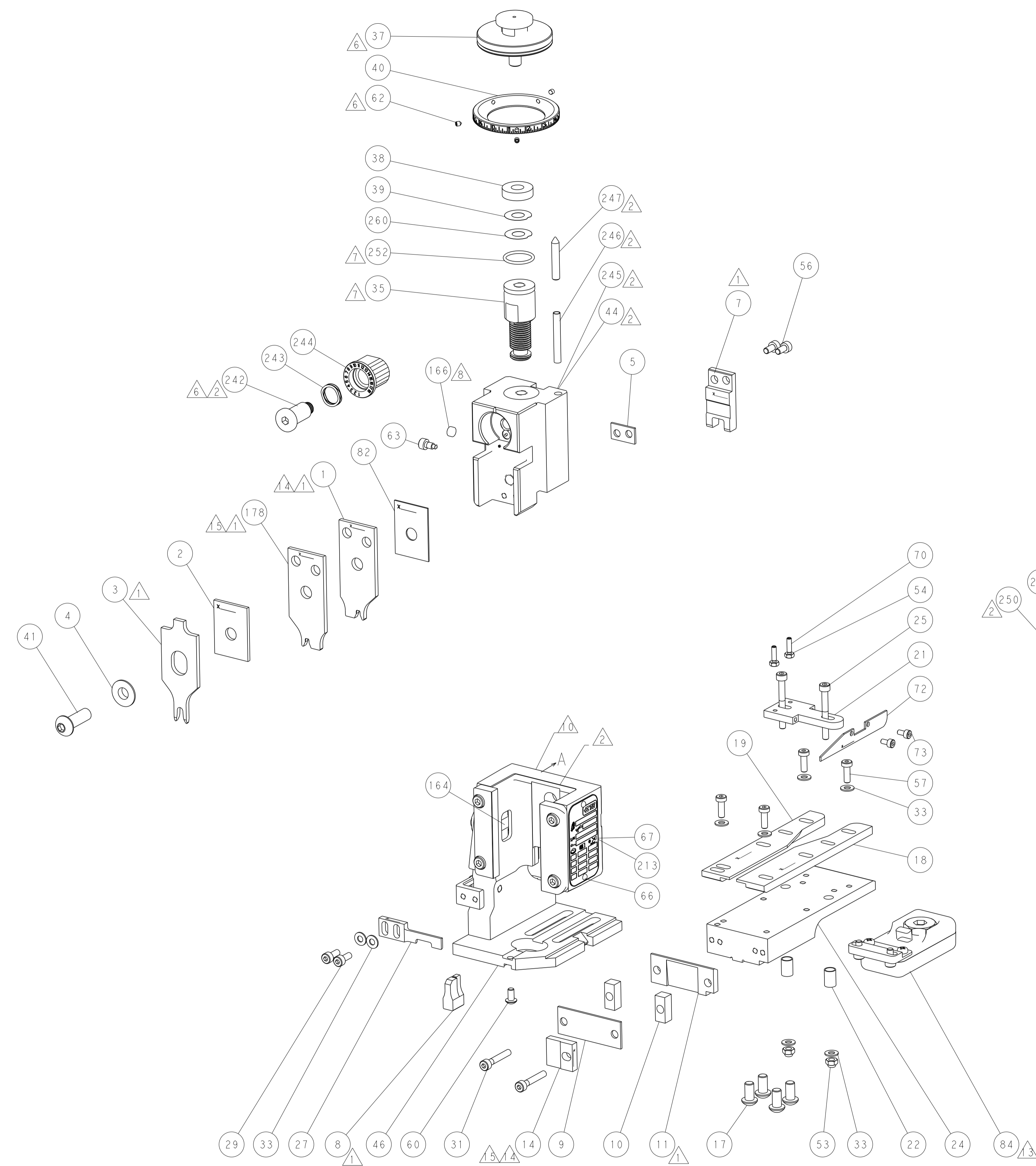
**ATLANTIC VERSION**  
 Shown on sheets 1 of 4 & 2 of 4  
 (Pacific version shown on sheets 3 of 4 & 4 of 4)

SET UP GAUGE	LOC	DIST	REVISIONS					
2119599-2	A	66	P	LTN	DESCRIPTION	DATE	OWN	APVD
			F		ECR-15-001913	06FEB2015	RK	GB
			G		ECR-15-004053	12MAR2015	BW	TE
			H		ECR-16-014182	06OCT2016	MEH	GB
			HI		ECR-17-004379	27MAR2017	TB	TE

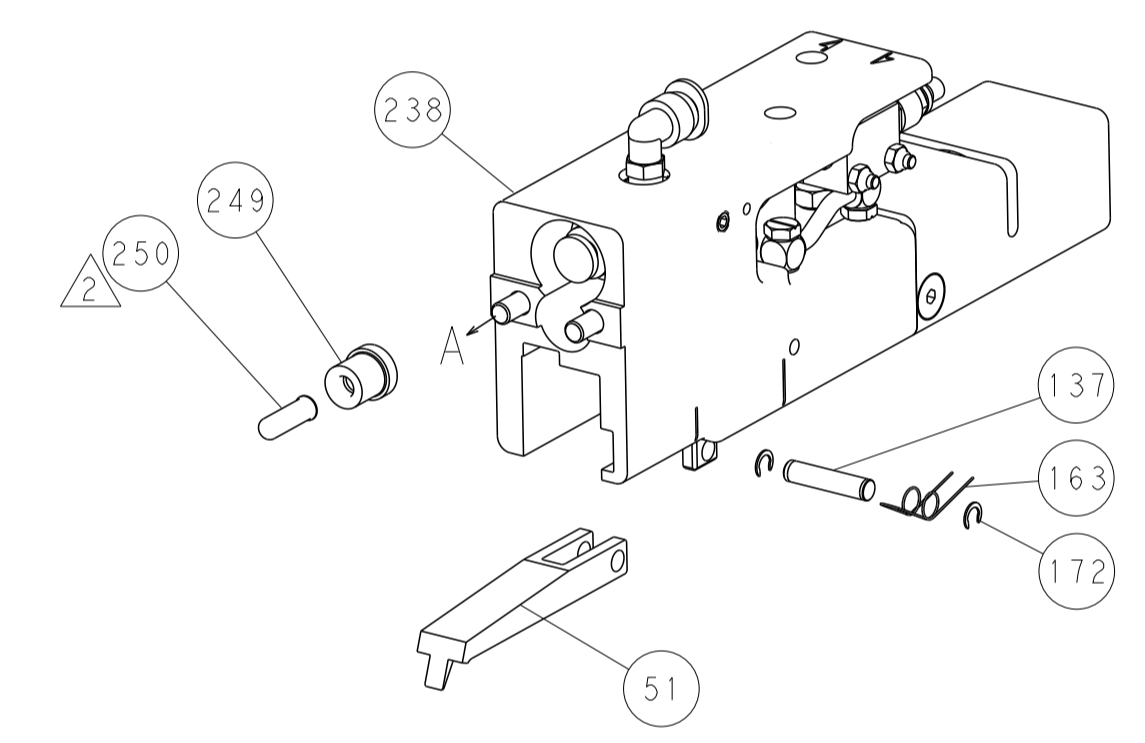
-	-	1	-	-	2119957-2	APPLICATOR SHIM PACK	260
<sup>7</sup>	-	1	-	1	8-21084-0	O-RING, .676 ID, .070 DIA. MAT.	252
	-	-	-	1	2119640-1	PUSH ROD, AIR FEED	250
	-	-	-	1	1803259-1	BUSHING, FLANGED	249
	-	-	-	1	2119641-1	FEED CAM, AIR FEED	248
	-	1	-	1	2119798-1	DETENT PIN	247
	-	1	-	1	1-22279-3	SPRING, COMPRESSION	246
	-	1	-	-	2119759-1	RAM, AMP STYLE, END FEED, NON-ADJUST	245
	-	1	1	1	2119082-9	CAM, SNAIL, INSULATION ADJUSTMENT	244
	-	1	1	1	2079764-1	WASHER, WAVE SPRING, CREST-TO-CREST	243
<sup>6</sup>	-	1	1	1	2119083-1	RETAINER, INSULATION DIAL	242
	-	2	2	-	2168400-7	SHCS, LOW HEAD, RoHS, M5 X 10	240
	-	-	-	1	2063440-1	AIR FEED MODULE	238
	-	1	1	-	2119740-2	TAG, IDENTIFICATION	213
	-	1	1	-	1901697-3	FEED FINGER ASSEMBLY, EF	183
<sup>5</sup> <sup>1</sup>	-	1	1	1	2-1803224-2	CRIMPER, WIRE	178
	-	-	-	2	21045-3	RING, RETAIN, EXTERN, 3/16 CRESCENT	172
	-	1	1	1	994969-1	MAGNET, RARE EARTH HIGH ENERGY	166
	REF	REF	REF	REF	994970-2	COUNTER, MAGNETIC	164
	-	-	-	1	240638-1	SPRING, FEED FINGER	163
	-	-	-	1	3-23627-7	PIN, RETAIN, GRVD, 3/16 X .854	137
	-	REF	REF	-	SEE NOTE 4	MEMORY CHIP, PROGRAMMED	135
	-	1	1	-	1633743-1	SERVO FEED LATCH ASM	133
<sup>3</sup>	-	1	1	1	2119955-2	ASSY, LUBRICATOR, END FEED	84
	-	1	1	1	455888-7	SPACER, CRIMPER	82
	-	2	2	2	1-2168083-1	SCR, SKT HD CAP, RoHS, M3 X 6	73
	-	1	1	1	464452-2	DRAG, STOCK	72
	-	1	1	1	2119956-2	DOCUMENTATION PACKAGE	71
	-	2	2	2	2-18032-2	SCR, SET, FLT POINT M3 X 10.0	70
	-	1	-	1	2119740-1	TAG, IDENTIFICATION	67
	-	2	2	2	2168078-1	SCREW, DRIVE, RH, RoHS, 2 x .188	66
	-	1	-	1	2119793-1	LIMITER, ADJUSTMENT BOLT	63
<sup>6</sup>	-	3	-	3	992763-5	SCR, SET, SOC, CONE POINT, M3 x 4.0	62
	-	1	1	1	2079383-4	SCR, BHSC, RoHS (M4 X 8)	60
	-	4	4	4	2168400-1	SHCS, LOW HEAD, RoHS, M4 X 12	57
	-	2	2	2	2168083-2	SCR, SKT HD CAP, RoHS, M4 X 8.0	56
	-	2	2	2	5018030-1	NUT, HEX, REG, RoHS, M3	54
	-	2	2	2	986965-8	NUT, LOCK, HEX, TORQUE (M4)	53
	-	-	-	1	2161920-2	NARROW PAWL, EF, AIR	51
	-	-	-	1	18023-9	SCR, SKT HD CAP M4 X 6.0	49
	-	1	1	1	2119655-5	APPLICATOR BASIC ASSEMBLY, EF	46
	-	1	-	1	2119369-1	RAM, AMP STYLE, END FEED	44
	-	1	1	1	2079383-7	SCR, BHSC, RoHS (M8 X 25)	41
	-	1	-	1	2119645-1	DISC, NUMBERED FA WIRE ADJUSTMENT	40
	-	1	-	1	2119957-1	APPLICATOR SHIM PACK	39
	-	1	1	1	1-2119644-2	RAM WASHER, PRECISION	38
<sup>6</sup>	-	1	1	1	2119085-1	FA HEAD, ATLANTIC STYLE	37
<sup>7</sup>	-	1	-	1	2119092-1	BOLT, ADJUSTMENT	35
	-	8	8	8	1-18028-2	WASHER, FLAT, REG M4	33
	-	2	2	2	1-2168083-2	SCR, SKT HD CAP, RoHS, M4 X 25	31
	-	2	2	2	1-2168083-0	SCR, SKT HD CAP, RoHS, M4 X 10	29
	-	1	1	1	468281-1	STRIPPER	27
	-	2	2	2	1-2168083-6	SCR, SKT HD CAP, RoHS, M4 X 35	25
	-	1	1	1	2161922-4	PLATE, STRIP GUIDE	24
	-	2	2	2	22281-6	SPRING, COMPRESSION	22
	-	1	1	1	1633168-2	ARM, STOCK DRAG	21
	-	1	1	1	3-1901696-2	STRIP GUIDE, REAR	19
	-	1	1	1	3-1901695-2	STRIP GUIDE, FRONT	18
	-	4	4	4	1-2079383-1	SCR, BHSC, RoHS (M6 X 12)	17
<sup>5</sup> <sup>4</sup>	-	1	1	1	469633-1	BLOCK, SUPPORT	14
<sup>1</sup>	-	1	1	1	461160-1	PLATE, REAR SHEAR	11
	-	2	2	2	5-240645-2	SPACER, SHEAR PLATE	10
<sup>1</sup>	-	1	1	1	455961-3	PLATE, FRONT SHEAR	9
<sup>1</sup>	1	1	1	1	3-1803000-6	ANVIL, COMBINATION, END FEED	8
<sup>1</sup>	-	1	1	1	1-469634-7	BLADE, SLUG	7
	-	-	-	-	-	-	6
	-	1	1	1	4-240641-8	SPACER	5
	-	1	1	1	238009-1	BLOCK, FL CRIMPER SPACER	4
<sup>1</sup>	1	1	1	1	1803229-1	CRIMPER, INSULATION O PREMIUM	3
	-	1	1	1	2-455888-0	SPACER, CRIMPER	2
<sup>4</sup> <sup>1</sup>	1	1	1	1	1-1803224-8	CRIMPER, WIRE	1

DIMENSIONS:	TOLERANCES UNLESS OTHERWISE SPECIFIED:	OWN	CHK	DATE	NAME	SIZE	CAGE CODE	DRAWING NO	RESTRICTED TO
mm	0 PLC ± 1 PLC ± 3 PLC ± 4 PLC ± ANGLES ±	STAKEM	G. BAILEY	11OCT2013	TE Connectivity	A1	00779	2150382	-
MATERIAL:		FINISH:		WEIGHT:	Customer Accessible Production Drawing		SCALE	SHEET	REV
							1:1	1 of 4	HI

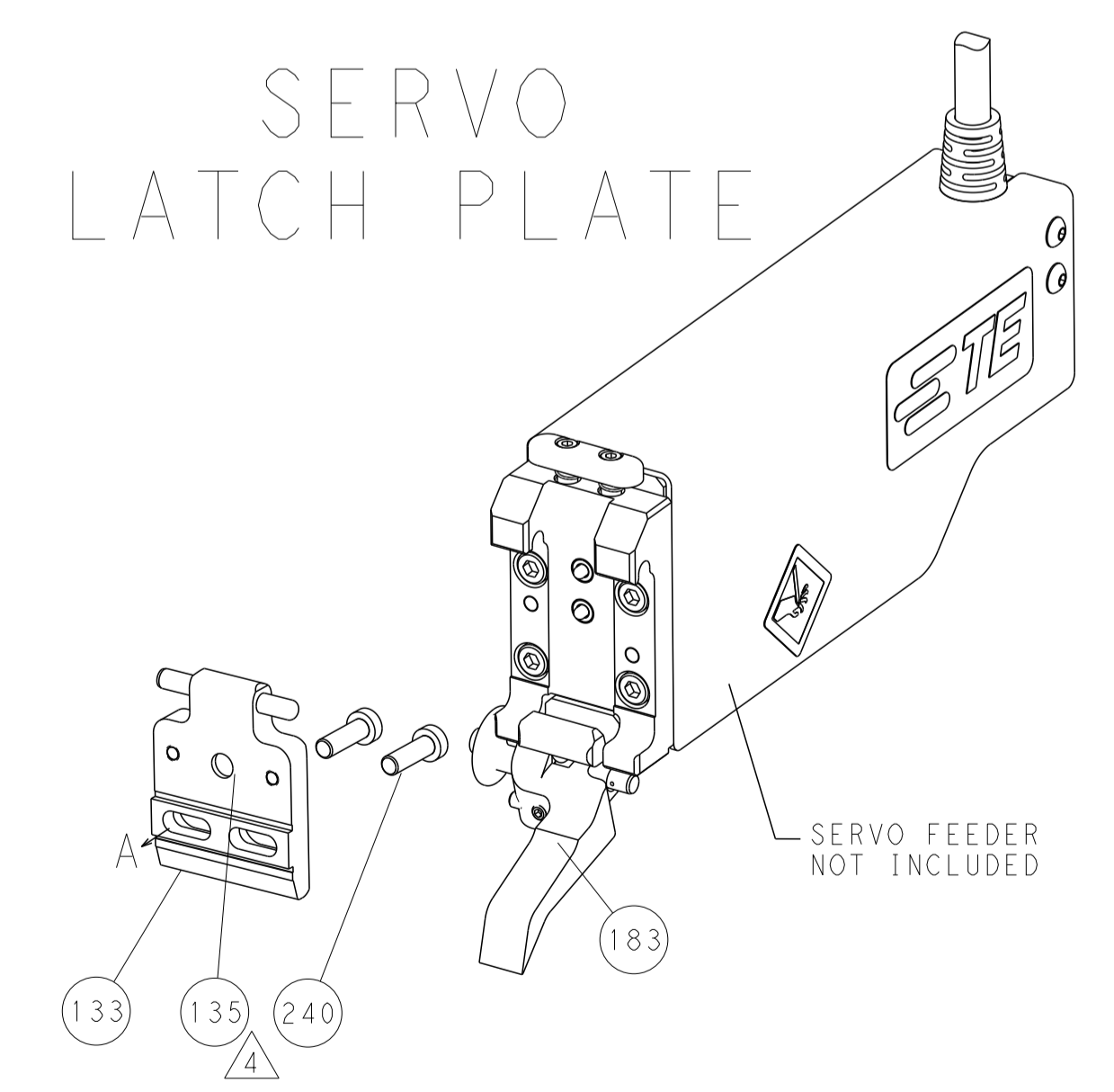
LOC	DIST	REV	DATE	BY	APPV
A	66				
REVISIONS			DESCRIPTION	DATE	BY
			SEE SHEET 1		



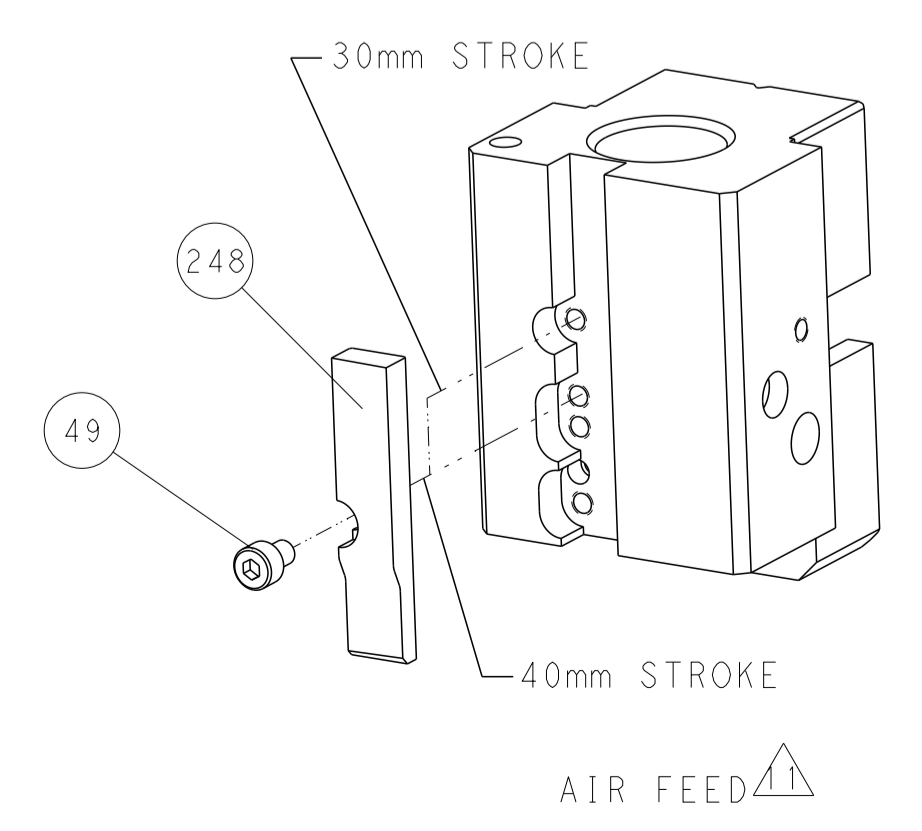
FEED TYPE  
PNEUMATIC



SERVO  
LATCH PLATE



CAM POSITION



**ATLANTIC VERSION**  
 Shown on sheets 1 of 4 & 2 of 4  
 (Pacific version shown on sheets 3 of 4 & 4 of 4)

DIMENSIONS:		TOLERANCES UNLESS OTHERWISE SPECIFIED:		DWN K. STAKEM 11OCT2013 CHK G. BAILEY 11OCT2013 APVD J. ELBIN 11OCT2013	TE Connectivity Harrisburg, PA 17105-3608
mm	0 PLC ±	1 PLC ±	2 PLC ±	NAME	
	3 PLC ±	4 PLC ±	ANGLES ±	PRODUCT SPEC	Ocean End Feed Applier
	MATERIAL	FINISH	WEIGHT	APPLICATION SPEC	
Customer Accessible Production Drawing				SIZE CAGE CODE DRAWING NO A1 00779 C=2150382	RESTRICTED TO
				SCALE 1:1	SHEET 2 OF 4

PACIFIC VERSION TERMINATOR INTERFACE ADAPTER	PART NUMBER	REVISION	DESCRIPTION	FEED TYPE	APPLICATOR STYLE CONVERSION CHART					
					CONVERT TO	PART NUMBERS REQUIRED				
	2-2150382-2	H	FINE CRIMP HEIGHT ADJUST	PNEUMATIC	-	-	-	-	-	-
					SERVO LATCH PLATE	2119951-1	1901697-3	8-2150382-5	-	2168400-7 (QUANTITY 2)
					SMART APPLICATOR	2161326-1	-	8-2150382-4	-	-
	2-2150382-5	H	FINE CRIMP HEIGHT ADJUST	SERVO LATCH PLATE $\Delta$	-	-	-	-	-	-
2-2150382-7	H	FINE CRIMP HEIGHT ADJUST	NONE	-	-	-	-	-	-	
7-2150382-7	H	CRIMP TOOLING KIT	-	-	-	-	-	-	-	

APPLICATOR DATA		
CRIMP	SIZE	TYPE
WIRE	.110 [2.79 mm]	F
INSUL	.180 [4.57 mm]	F
APPL INSTRUCTIONS 408-10390		

TERMINAL DATA: TE TERMINAL		TE CRIMP SPECIFICATION	
TERMINAL NAME: RECEPTACLE, FASTON, FLAG, LIF, .250 SERIES			
WIRE STRIP LENGTH		INSULATION DIAMETER RANGE	
.198-.213 IN [5.02-5.40 mm]		$\varnothing$ .110-.160 IN [2.79-4.06 mm]	
TERMINAL APPLICATION SPECIFICATION	114-2079	-	-
TERMINALS APPLIED $\Delta$ <sub>10</sub> $\Delta$ <sub>12</sub>			
TE TERMINAL	TE TERMINAL	TE TERMINAL	TE TERMINAL
63901-1		63009-1	63096-1
63901-2		63009-2	63096-2
63010-1		63009-3	
63010-2		63011-1	
63010-3		63011-2	

WIRE SIZE	CRIMP HEIGHT mm [INCH]	CRIMP HEIGHT REFERENCE SETTING $\Delta$
14 AWG	1.85 +/- 0.05 [0.073 +/- .002]	3.6
16 AWG	1.62 +/- 0.05 [0.064 +/- .002]	6.1
18 AWG	1.47 +/- 0.05 [0.058 +/- .002]	7.7

- $\Delta$  RECOMMENDED SPARE PARTS
- $\Delta$  GREASE BEARING SURFACES LIGHTLY
- 3. LUBRICATE DAILY PER THE APPLICATOR INSTRUCTION SHEET SUPPLIED WITH THE APPLICATOR.
- $\Delta$  APPLICATOR SPECIFIC DATA TO BE ENTERED INTO BLANK MEMORY CHIP AT ASSEMBLY. SEE BELOW FOR PART NUMBER:  
 PNEUMATIC FEED WITH "SMART APPLICATOR" CONVERSION: 8-2150382-4  
 SERVO FEED WITH "FINE CRIMP HEIGHT ADJUST": 8-2150382-5
- 5. ADJUSTMENT OF THE STRIPPER MAY BE REQUIRED WHEN MOVING THE APPLICATOR BETWEEN BENCH AND LEADMAKER APPLICATIONS.
- $\Delta$  APPLY PART NUMBER 1-23419-5 LOCTITE TO THREADS OF ITEMS 62 & 242.
- $\Delta$  GREASE THREADS, GROOVE AND O-RING ON ITEMS 139 & 153.
- $\Delta$  MAGNET, ITEM 166 MUST BE ORIENTED CORRECTLY IN ORDER TO PROPERLY ACTUATE THE COUNTER.
- $\Delta$  CRIMP HEIGHT REFERENCE SETTING WAS THE SETTING USED WHEN THE APPLICATOR WAS QUALIFIED AT THE FACTORY. ADJUSTMENT MAY BE NECESSARY WHEN RUNNING APPLICATOR IN THE FIELD.
- $\Delta$  10. TERMINAL PITCH IS NOT COMPATIBLE WITH MECHANICAL FEED.
- $\Delta$  11. THE RECOMMENDED SET-UP FOR END FEED APPLICATORS IS POST-FEED WITH ITEM 2119653-1. THE APPLICATOR CAN BE CONFIGURED FOR PRE-FEED WITH ITEM 2119652-1 BUT MAY ENCOUNTER PROBLEMS WITH SOME APPLICATIONS. FEED ISSUES OR TERMINAL JAMMING MAY OCCUR IN THE PRE-FEED CONFIGURATION.
- $\Delta$  12. TERMINAL LUBRICATOR IS RECOMMENDED.

- $\Delta$  13. RIGHT HAND ORIENTED FLAG TERMINALS - WHEN RUNNING THESE TERMINALS, USE ITEM 1 WIRE CRIMPER WITH ITEM 14 BLOCK SUPPORT LOCATED UNDER THE TERMINAL FLAG.
- $\Delta$  14. LEFT HAND ORIENTED FLAG TERMINALS - WHEN RUNNING THESE TERMINALS, USE ITEM 261 WIRE CRIMPER WITH ITEM 14 BLOCK SUPPORT FLIPPED OVER AND LOCATED UNDER THE TERMINAL FLAG.

**\*WARNING**  
 ON INSTALLATION, SET WIRE DISC, ITEM 40 TO LARGEST WIRE SIZE SETTING. USE OF SETTINGS BELOW MINIMUM REQUIRED CRIMP HEIGHT SETTING WILL CAUSE DAMAGE TO CRIMP TOOLING.

**PACIFIC VERSION**  
 Shown on sheets 3 of 4 & 4 of 4  
 (Atlantic version shown on sheets 1 of 4 & 2 of 4)

SET UP GAUGE	LOC	DIST	REVISIONS			
2119599-2	A	66	REV	DATE	BY	APPD
			-	SEE SHEET 1	-	-

-	1	1	1	2119782-1	FINE ADJUST HEAD ASM, PACIFIC STYLE	251
-	-	-	1	2119640-1	PUSH ROD, AIR FEED	250
-	-	-	1	1803259-1	BUSHING, FLANGED	249
-	1	1	1	1-22279-3	SPRING, COMPRESSION	246
-	1	1	1	2119082-9	CAM, SNAIL, INSULATION ADJUSTMENT	244
-	1	1	1	2079764-1	WASHER, WAVE SPRING, CREST-TO-CREST	243
-	1	1	1	2119083-1	RETAINER, INSULATION DIAL	242
$\Delta$ 6	-	-	2	2168400-7	SHCS, LOW HEAD, RoHS, M5 X 10	240
-	-	-	1	2063440-1	AIR FEED MODULE	238
-	-	1	-	2119740-2	TAG, IDENTIFICATION	213
-	4	4	4	2079383-9	SCR, BHSC, RoHS (M6 X 20)	186
-	-	1	-	1901697-3	FEED FINGER ASSEMBLY, EF	183
$\Delta$ 1 $\Delta$ 1	-	1	1	2-1803224-2	CRIMPER, WIRE	178
-	-	-	2	21045-3	RING, RETAIN, EXTERN, 3/16 CRESCENT	172
-	1	1	1	994969-1	MAGNET, RARE EARTH HIGH ENERGY	166
-	REF	REF	REF	994970-2	COUNTER, MAGNETIC	164
-	-	-	1	240638-1	SPRING, FEED FINGER	163
$\Delta$ 7	-	1	1	8-21084-1	O-RING, .801 ID, .070 DIA. MAT.	153
-	-	-	1	2119641-2	FEED CAM, AIR FEED	152
-	1	1	1	2119798-2	DETENT PIN	145
-	1	1	1	2079383-8	SCR, BHSC, RoHS (M4 X 16)	144
-	1	1	1	2119655-6	APPLICATOR BASIC ASSEMBLY, EF	141
-	1	1	1	2119651-1	RAM, ASIAN STYLE, END FEED	140
$\Delta$ 7	-	1	1	2119092-2	BOLT, ADJUSTMENT	139
-	-	-	1	3-23627-7	PIN, RETAIN, GRVD, 3/16 X .854	137
-	-	REF	-	SEE NOTE 4	MEMORY CHIP, PROGRAMMED	135
-	-	1	-	1633743-1	SERVO FEED LATCH ASM	133
$\Delta$ 2	-	1	1	2119955-2	ASSY, LUBRICATOR, END FEED	84
-	1	1	1	455888-7	SPACER, CRIMPER	82
-	2	2	2	1-2168083-1	SCR, SKT HD CAP, RoHS, M3 X 6	73
-	1	1	1	464452-2	DRAG, STOCK	72
-	1	1	1	2119956-2	DOCUMENTATION PACKAGE	71
-	2	2	2	2-18032-2	SCR, SET, FLT POINT M3 X 10.0	70
-	1	-	1	2119740-1	TAG, IDENTIFICATION	67
-	2	2	2	2168078-1	SCREW, DRIVE, RH, RoHS, 2 x .188	66
-	1	1	1	2119793-1	LIMITER, ADJUSTMENT BOLT	63
$\Delta$ 6	-	3	3	992763-5	SCR, SET, SOC, CONE POINT, M3 X 4.0	62
-	4	4	4	2168400-1	SHCS, LOW HEAD, RoHS, M4 X 12	57
-	2	2	2	2168083-2	SCR, SKT HD CAP, RoHS, M4 X 8.0	56
-	2	2	2	5018030-1	NUT, HEX, REG, RoHS, M3	54
-	2	2	2	986965-8	NUT, LOCK, HEX, TORQUE (M4)	53
-	-	-	1	2161920-2	NARROW PAWL, EF, AIR	51
-	-	-	1	18023-9	SCR, SKT HD CAP M4 X 6.0	49
-	1	1	1	2079383-7	SCR, BHSC, RoHS (M8 X 25)	41
-	1	1	1	2119645-1	DISC, NUMBERED FA WIRE ADJUSTMENT	40
-	1	1	1	2119957-1	APPLICATOR SHIM PACK	39
-	1	1	1	1-2119644-2	RAM WASHER, PRECISION	38
-	8	8	8	1-18028-2	WASHER, FLAT, REG M4	33
-	2	2	2	1-2168083-2	SCR, SKT HD CAP, RoHS, M4 X 25	31
-	2	2	2	1-2168083-0	SCR, SKT HD CAP, RoHS, M4 X 10	29
-	1	1	1	468281-1	STRIPPER	27
-	2	2	2	1-2168083-6	SCR, SKT HD CAP, RoHS, M4 X 35	25
-	1	1	1	2161922-4	PLATE, STRIP GUIDE	24
-	2	2	2	22281-6	SPRING, COMPRESSION	22
-	1	1	1	1633168-2	ARM, STOCK DRAG	21
-	1	1	1	3-1901696-2	STRIP GUIDE, REAR	19
-	1	1	1	3-1901695-2	STRIP GUIDE, FRONT	18
$\Delta$ 1 $\Delta$ 3	-	2	2	469633-1	BLOCK, SUPPORT	14
$\Delta$ 1	-	1	1	461160-1	PLATE, REAR SHEAR	11
-	2	2	2	5-240645-2	SPACER, SHEAR PLATE	10
$\Delta$ 1	-	1	1	455961-3	PLATE, FRONT SHEAR	9
$\Delta$ 1	1	1	1	3-1803000-6	ANVIL, COMBINATION, END FEED	8
$\Delta$ 1	-	1	1	1-469634-7	BLADE, SLUG	7
-	-	-	-	-	-	6
-	1	1	1	4-240641-8	SPACER	5
-	1	1	1	238009-1	BLOCK, FL CRIMPER SPACER	4
$\Delta$ 1	1	1	1	1803229-1	CRIMPER, INSULATION O PREMIUM	3
-	1	1	1	2-455888-0	SPACER, CRIMPER	2
$\Delta$ 3 $\Delta$ 1	1	1	1	1-1803224-8	CRIMPER, WIRE	1

DIMENSIONS:		TOLERANCES UNLESS OTHERWISE SPECIFIED:		DWG		NAME	
mm	0 PLC	±	±	CHK	L. STAKEM	11OCT2013	TE Connectivity
	1 PLC	±	±	CHK	G. BAILEY	11OCT2013	Harrisburg, PA 17105-3608
	2 PLC	±	±	APPD	J. ELBIN	11OCT2013	
	3 PLC	±	±	PRODUCT SPEC			
	4 PLC	±	±	APPLICATION SPEC			
	ANGLES	±	±				
	FINISH						
MATERIAL				WEIGHT			
Customer Accessible Production Drawing				SCALE	1:1	SHEET	3 OF 4

