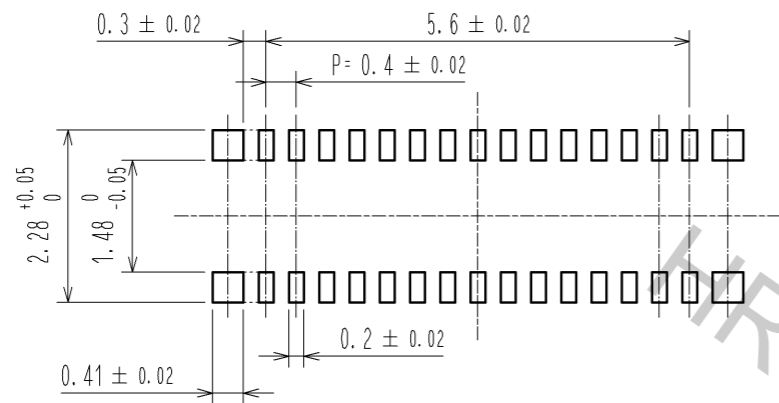


NOTE) 1 . ALL LEAD CO-PLANARITY SHALL BE 0.08mm MAX  
 2 . CONTACT PLATING SPECIFICATIONS.  
 CONTACT AREA : GOLD 0.05 μm MIN  
 SMT LEAD : GOLD 0.05 μm MIN  
 UNDERPLATING : NICKEL 1 μm MIN  
 ( SURFACE : SEALING )  
 3 . HRS MARK AND CAV NO. ARE INDICATED IN APPROX POSITION SHOWN.  
 4 . GATE POSITION IS INDICATED IN APPROX POSITION SHOWN.

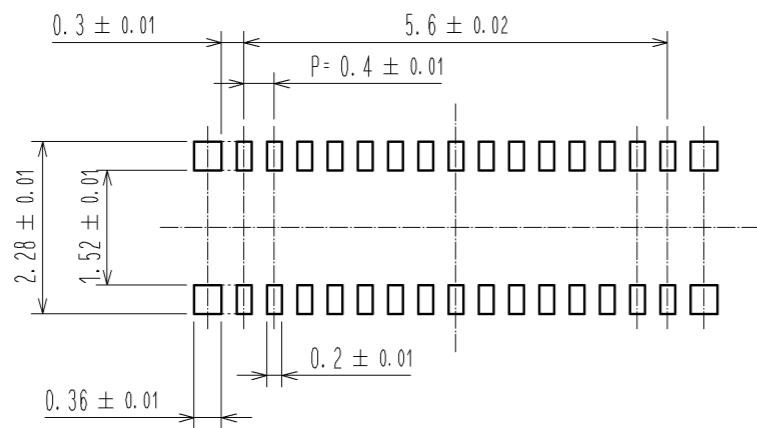
3	PS	CLEAR (ENBOSSED CARRIER TAPE)	6	PS	CLEAR (REINFORCEMENT COLLAR)			
2	PHOSPHOR BRONZE	2	5	PS	BLACK (PLASTIC REEL)			
1	LCP	UL94 V-0, BLACK	4	POLYESTER	CLEAR (COVER TAPE)			
NO.	MATERIAL	FINISH . REMARKS	NO.	MATERIAL	FINISH . REMARKS			
UNITS	mm	SCALE	10 : 1	COUNT	DESCRIPTION OF REVISIONS	DESIGNED	CHECKED	DATE
<b>HRS</b> HIROSE ELECTRIC CO., LTD.		APPROVED : KH. IKEDA	11.04.20	DRAWING NO. EDC3-324409-01				
		CHECKED : AR. TAKAHASHI	11.04.20	PART NO. BM14C(0.8)-34DS-0.4V(51)				
		DESIGNED : SH. HOSODA	11.04.20	CODE NO. CL684-8020-4-51				
		DRAWN : YN. SAKAMOTO	11.04.20					

◆ RECOMMENDED PCB LAYOUT

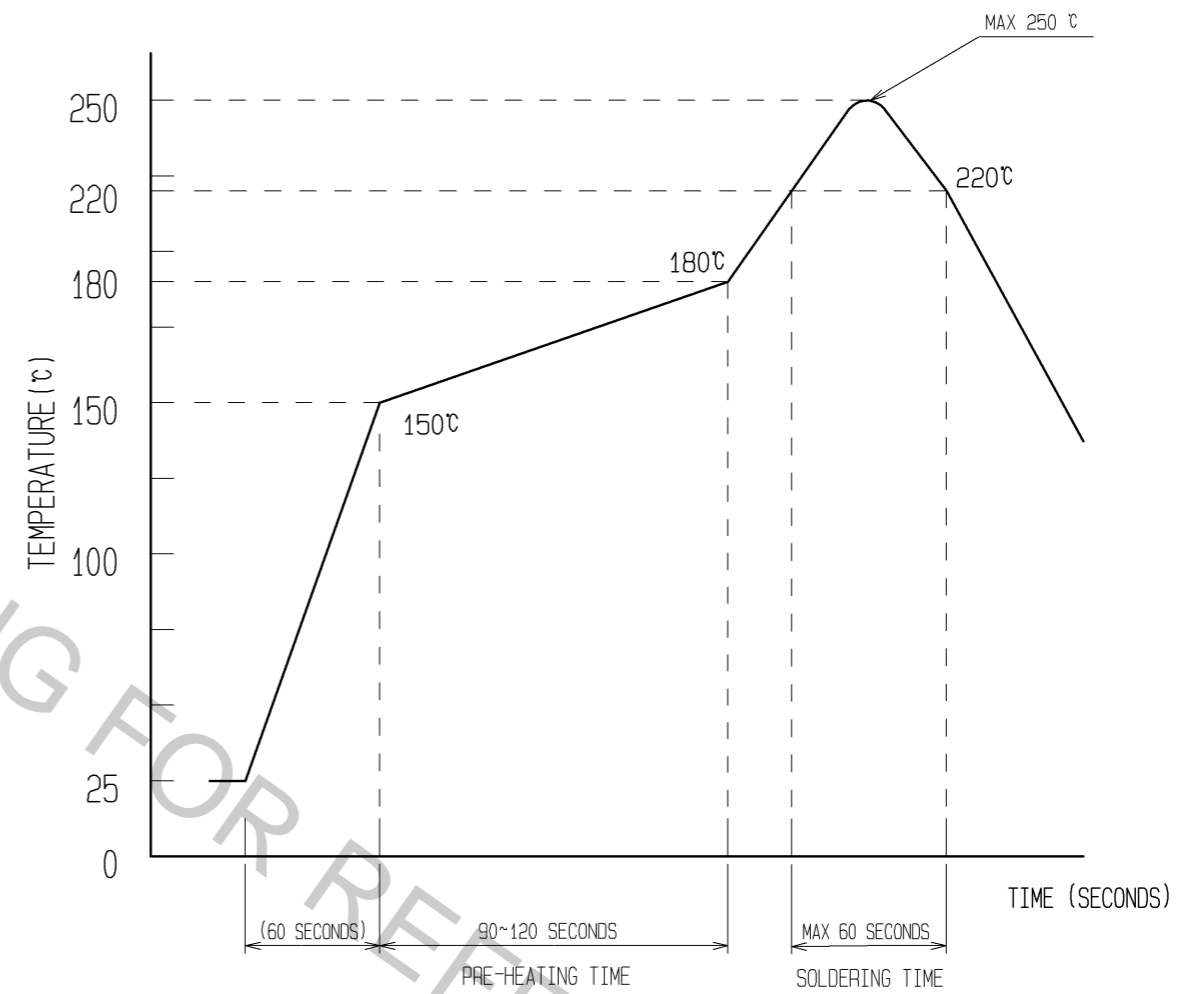


◆ RECOMMENDED METAL MASK DIMENSIONS

METAL MASK THICKNESS : 100 μm



5 RECOMMENDED REFLOW TEMPERATURE PROFILE USING LEAD-FREE SOLDER PASTE.



- REFLOW METHOD: IR REFLOW.  
 NUMBER OF REFLOW CYCLES: 2 CYCLES MAX.
- 1) REFLOW TIME  
 DURATION ABOVE 220°C, 60 SEC. MAX.  
 (PEAK TEMPERATURE: 250°C MAX)
  - 2) PRE-HEAT TIME  
 PRE-HEAT TEMPERATURE(MIN): 150°C  
 PRE-HEAT TEMPERATURE(MAX): 180°C  
 PRE-HEAT TIME: 90-120 sec.

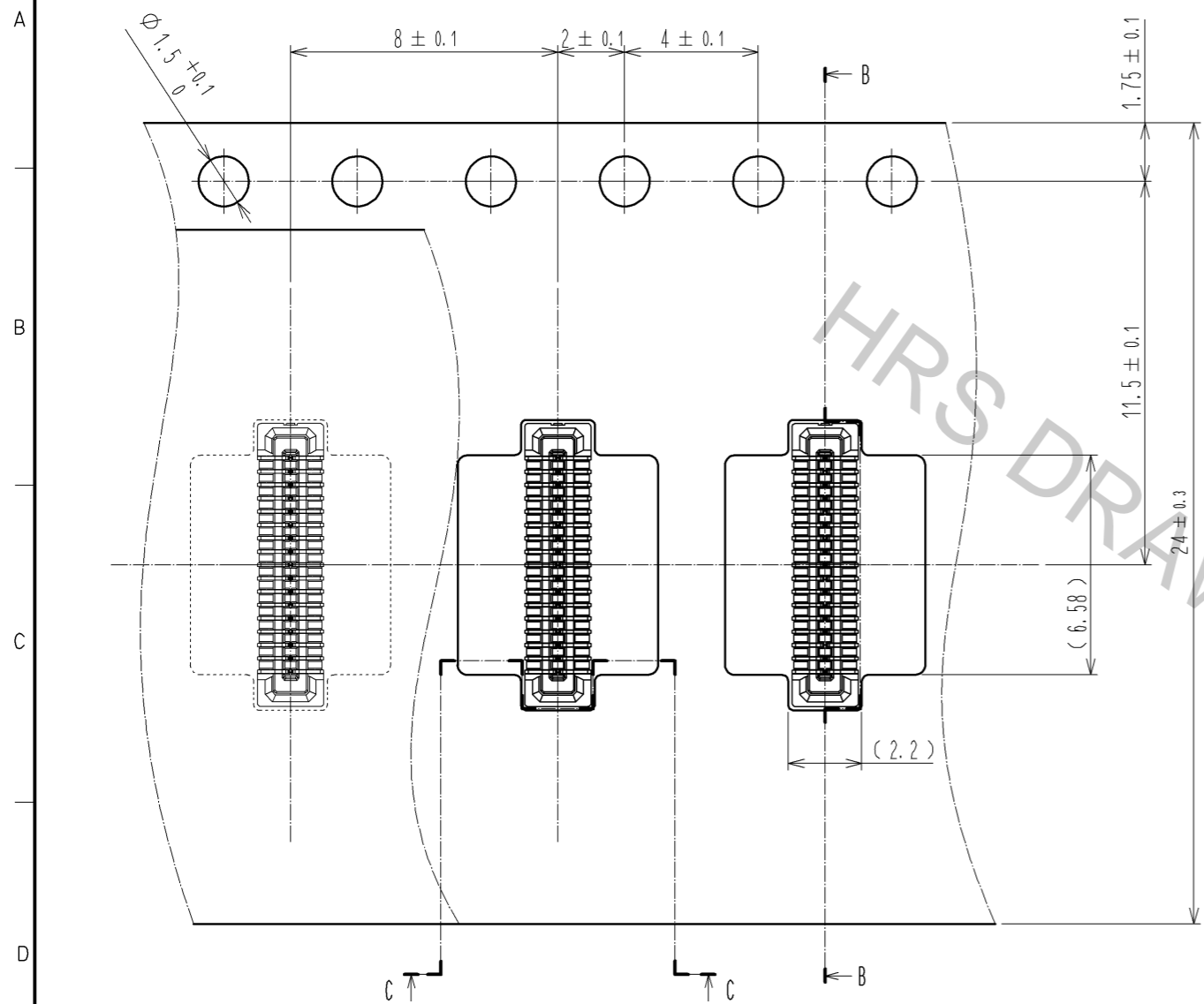
5 THIS TEMPERATURE PROFILE IS PER THE CONDITIONS SHOWN ABOVE. ADDITIONAL FACTORS, SUCH AS SOLDER PASTE TYPE, PCB SIZE AND OTHER MOUNTED COMPONENTS COULD AFFECT THE PROFILE, THEREFORE, A THOROUGH EVALUATION OF MOUNTING CONDITION IS REQUIRED PRIOR TO PRODUCTION. TEMPERATURE IS MEASURED AT CONTACT LEAD.

<b>HRS</b>	DRAWING NO.	EDC3-324409-01
	PART NO.	BM14C(0.8)-34DS-0.4V(51)
	CODE NO.	CL684-8020-4-51

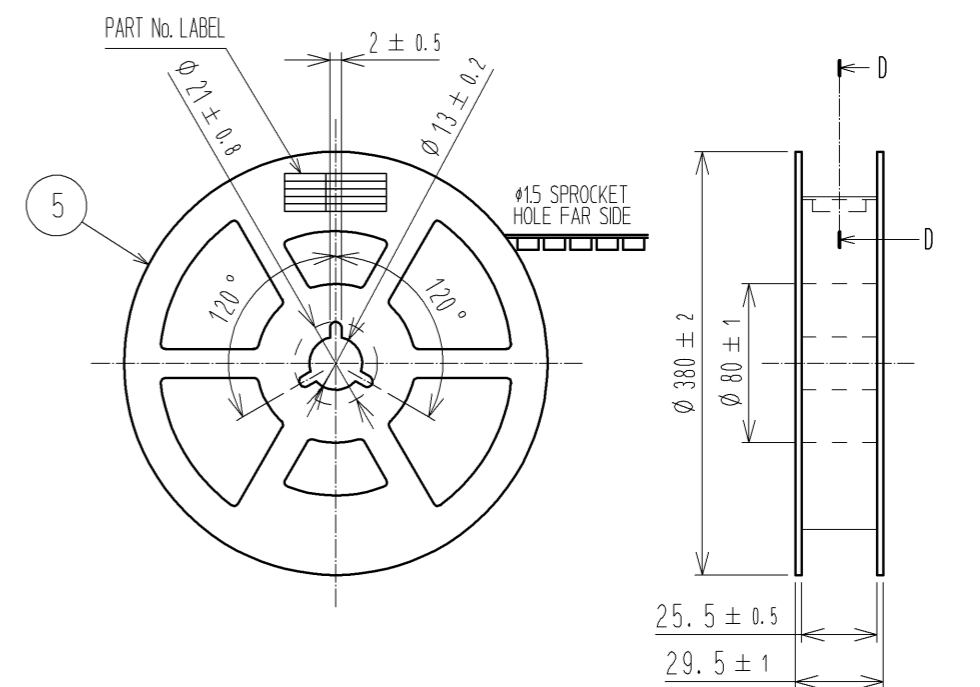
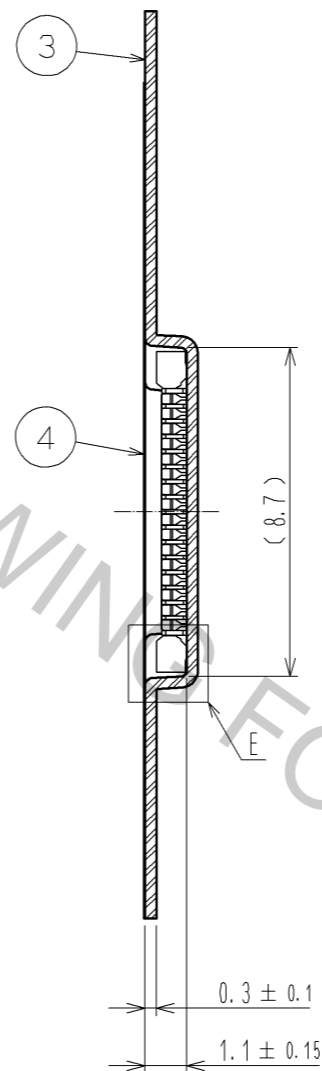
2/3

### EMBOSSED CARRIER TAPE PACKAGING (5:1)

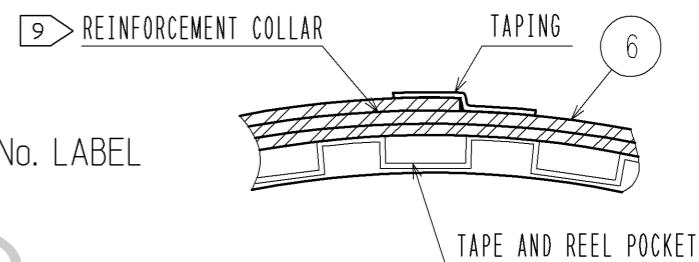
### STYLE AND DIMENTION OF REEL (FREE)



B-B (5:1)



D-D (FREE)

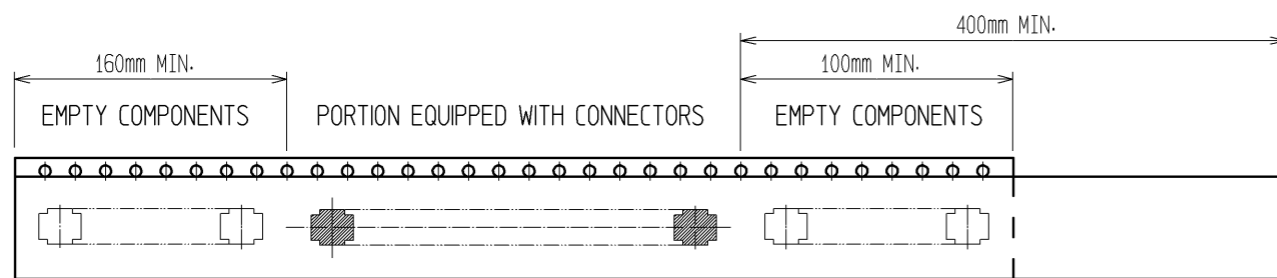
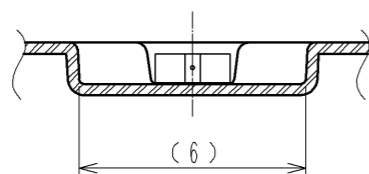


#### DETAIL OF PART No. LABEL

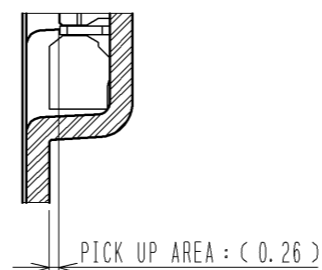
SUPPLIER	
QUANTITY	
PART No.	
CODE No.	
DATE OF MANUFACTURED	
製造年月日	** ** *
製品コード	CL0684-8020-4-(51)
製品名	BM14C(0.8)-34DS-0.4V(51)
数量	8,000
納入者	ヒロセ電機(株)

DIRECTION OF UNREELING

C-C (5:1)



E(10:1)



6. PER REEL 8000 CONNECTORS.

7. THE DIMENSIONS IN PARENTHESSES ARE FOR REFERENCE.

8. REFER TO JIS C 0806(PACKAGING OF COMPONENTS FOR AUTOMATIC HANDLING)

9. AFTER PACKAGING, ROLL 2 METERS OF THE REINFORCEMENT COLLAR TO OUTER CIRCUMFERENCE OF TAPE AND REEL POCKET, AND TAPE DOWN AT THE END THE COLLAR.

<b>HRS</b>	DRAWING NO.	EDC3-324409-01
	PART NO.	BM14C(0.8)-34DS-0.4V(51)
	CODE NO.	CL684-8020-4-51
		$\triangle 3/3$