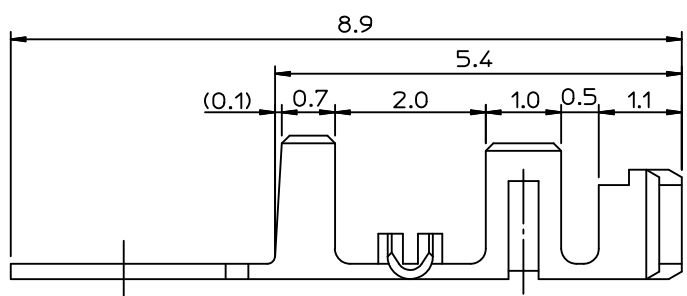


NOTE

1. MATERIAL
  - 1) BRASS (CDA 260)
  - 2) PHOSPHOR BRONZE (CDA 510)
2. PLATING
  - 1) PRE PLATED - TIN OVER COPPER
  - 2) POST PLATED - TIN/LEAD OVER COPPER
3. USED HOUSING : 35022-00\*\*/35023-00\*\*/68418-\*\*00
- ④ 4. CAMBER : 30/1,000 MAX.



POST-PLATED	PHOS. BRON.	AWG #24-#30	1.8	1.9	R0.4	0.85	350211310	35021-1310
PRE-PLATED	PHOS. BRON.	(INS. DIA: $\varnothing$ 1.5 MAX.)	2.5	2.5	R0.7	1.05	350211301	35021-1301
	BRASS						350211201	35021-1201
PRE-PLATED	PHOS. BRON.	AWG #22-#28 ①	2.5	2.5	R0.7	1.05	350211101	35021-1101
	BRASS	(INS. DIA: $\varnothing$ 1.9 MAX.)					350211001	35021-1001
POST-PLATED	PHOS. BRON.						350211110	35021-1110
PLATING	MATERIAL	WIRE RANGE	D	C	B	A	MAT'L NO.	ENG NO.

REVISED  
 EC NO: KOR2011-0132  
 DRW: SUNGHYUK JOO 2011/05/24  
 CHKD: YSOOK IM 2011/05/24  
 APPR: YUNSIKK IM 2011/06/03

QUALITY SYMBOLS	DESCRIPTION
▼=0	
Ⓢ=0	

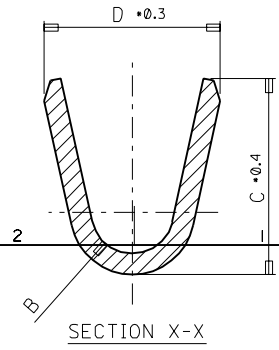
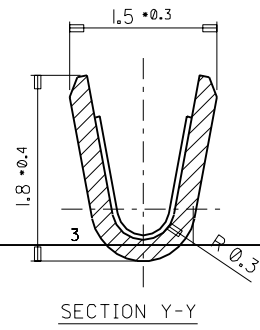
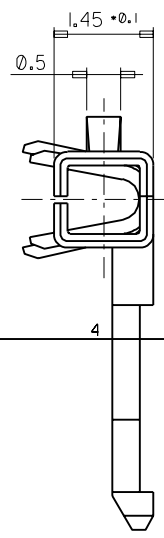
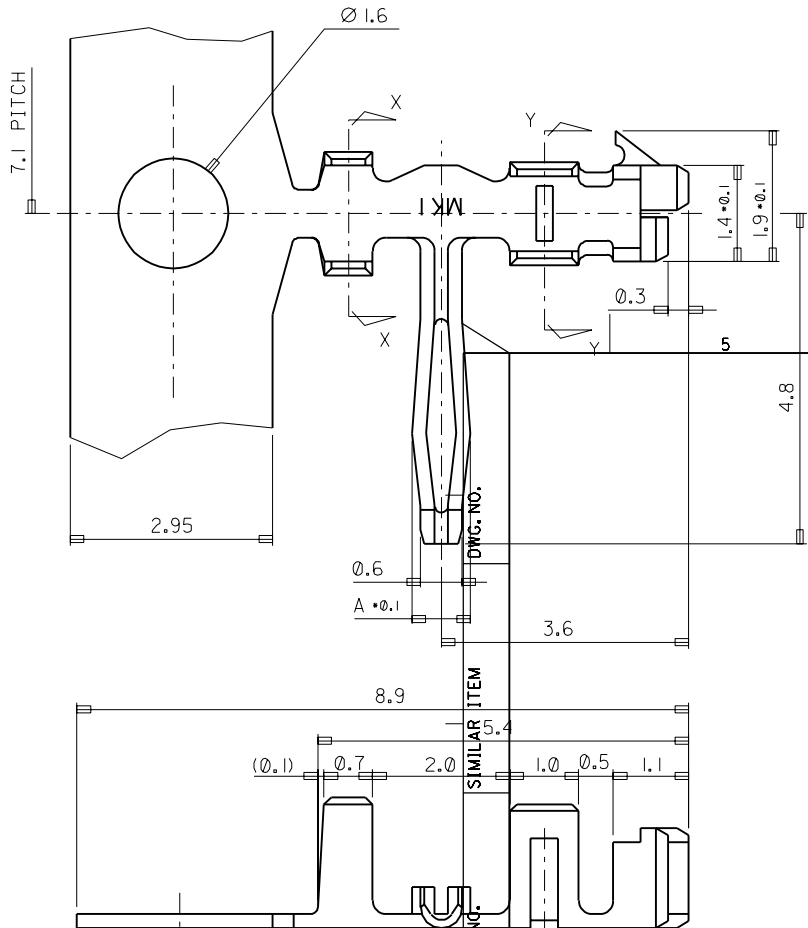
GENERAL TOLERANCES (UNLESS SPECIFIED)	
mm	INCH
4 PLACES	± ---
3 PLACES	± ---
2 PLACES	± ---
1 PLACE	± 0.3
ANGULAR ± 1 °	
DRAFT WHERE APPLICABLE MUST REMAIN WITHIN DIMENSIONS	

DIMENSION STYLE		SCALE		DESIGN UNITS		THIRD ANGLE PROJECTION	
MM ONLY		15:1		METRIC		⊙ □	
DRAWN BY	DATE	TITLE					
HSSHIN		R/A B-IN TERMINAL					
CHECKED BY	DATE						
JKOH							
APPROVED BY	DATE						
MATERIAL NO.		DOCUMENT NO.		SHEET NO.			
SEE TABLE		SD-35021-001		1 OF 1			

DRAWN BY		DATE		TITLE			
HSSHIN				R/A B-IN TERMINAL			
CHECKED BY		DATE					
JKOH							
APPROVED BY		DATE					
MATERIAL NO.		DOCUMENT NO.		SHEET NO.			
SEE TABLE		SD-35021-001		1 OF 1			

DO NOT SCALE DRAWING  
DIMENSION IN METRIC

PROJECT NO. 35021-I-1\*\*\*  
SIMILAR ITEM 35021-I-1\*\*\*  
DWG. NO. SD 35021-I-1\*\*\*



- NOTE
- MATERIAL
    - BRASS (CDA 260)
    - PHOSPHOR BRONZE (CDA 510)
  - PLATING
    - PRE PLATED - TIN OVER COPPER
    - POST PLATED - TIN/LEAD OVER COPPER
  - USED HOUSING : 35022-00\*\* / 35023-00\*\*

POST-PLATED	PHOS. BRON.	AWG #24-#30	1.8	1.9	R0.4	0.85	35021-1310
PRE-PLATED	PHOS. BRON.	(INS. DIA: Ø 1.5 MAX.)	2.5	2.5	R0.7	1.05	35021-1301
	BRASS						35021-1201
PRE-PLATED	PHOS. BRON.	AWG #22-#30	2.5	2.5	R0.7	1.05	35021-1101
	BRASS	(INS. DIA: Ø 1.9 MAX.)					35021-1001
POST-PLATED	PHOS. BRON.						35021-1110
PLATING	MATERIAL	WIRE RANGE	D	C	B	A	ENG NO.

REVISED EC NO. KOR1998-0091 DRWN: HSSHIN(980609) CHK: JKOH APPR: CWLEE	QUALITY SYMBOLS MAJOR CRITICAL	GENERAL TOLERANCES: (UNLESS SPECIFIED)		SCALE 15-1	DESIGN UNITS <input checked="" type="checkbox"/> mm <input type="checkbox"/> INCH	THIRD ANGLE PROJECTION	DIMENSIONS: <input type="checkbox"/> mm <input type="checkbox"/> INCH <input checked="" type="checkbox"/> mm ONLY	SHT	REV
		4 PLACES ±0. mm ±. INCH	3 PLACES ±0. mm ±. INCH	2 PLACES ±0. mm ±. INCH	1 PLACE ±0.3 mm ±. INCH	ANGULAR ± 1 °	DRAWN BY & DATE HSSHIN	CHECKED BY & DATE JKOH	APPROVED BY & DATE CWLEE
REV	DESCRIPTION	DRAWN WHERE APPLICABLE MUST REMAIN WITHIN DIMENSIONS		CAD FILENAME SD35021.DGN		MATERIAL NO. 350-21-1***	DRAWING NO. SD 35021-I-1***	SHEET NO. 10F1	SIZE B

THIS DRAWING CONTAINS INFORMATION THAT IS PROPRIETARY TO MOLEX INCORPORATED AND SHOULD NOT BE USED WITHOUT WRITTEN PERMISSION.