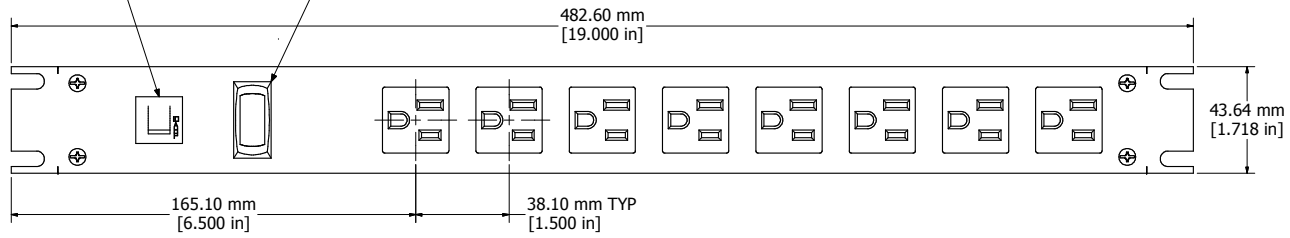
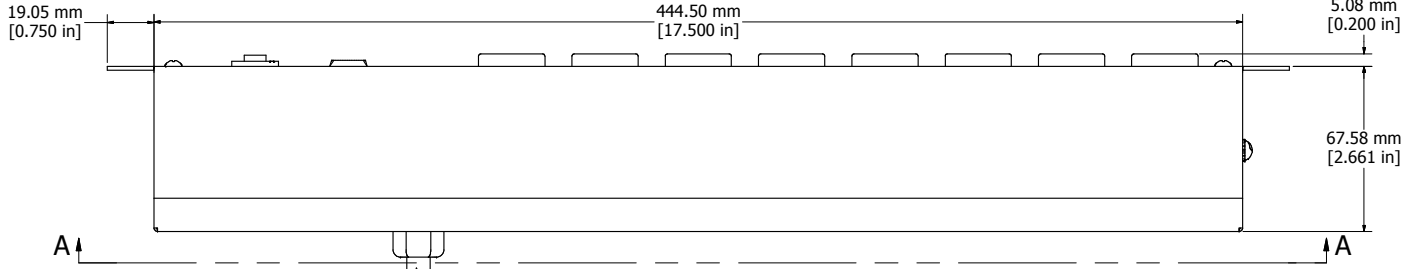


RESETABLE CIRCUIT BREAKER

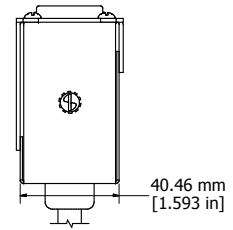
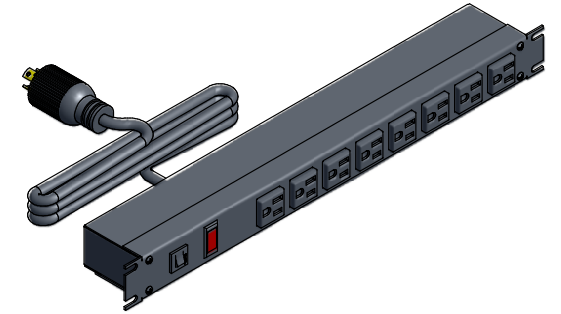
PILOT LIGHT



ASSEMBLY - VIEW FROM FRONT



ISOMETRIC VIEW

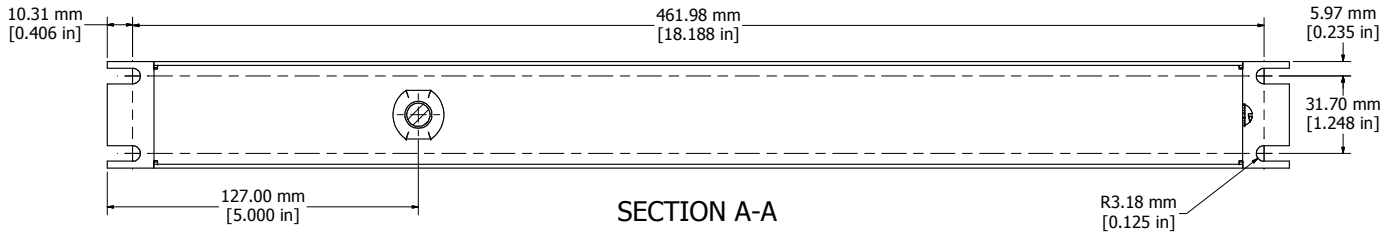


ASSEMBLY - VIEW FROM SIDE

6' FOOT TWIST POWER CORD (NEMA L5-15P)



ASSEMBLY - VIEW FROM BOTTOM



SECTION A-A

1582T8C1BK
Finish - Front - Black Painted Steel
Back - Black Painted Steel
Rated - 125 VAC, 60 Hz, 15 Amps
Approvals - CSA Certified Standards C22.2 (No. 21-95, 42-99)
- UL Recognized Standard UL1363
Colours & Cord Length
1582T8C1BK - Black w/ 6' Foot Twist Power Cord (NEMA L5-15P)
1582T8C1 - ASA 61 Grey w/ 6' Foot Twist Power Cord (NEMA L5-15P)
1582T8D1BK - Black w/ 15' Foot Twist Power Cord (NEMA L5-15P)
1582T8D1 - ASA 61 Grey w/ 15' Foot Twist Power Cord (NEMA L5-15P)



HAMMOND MANUFACTURING™

1582T8C1BK

www.hammondmfg.com