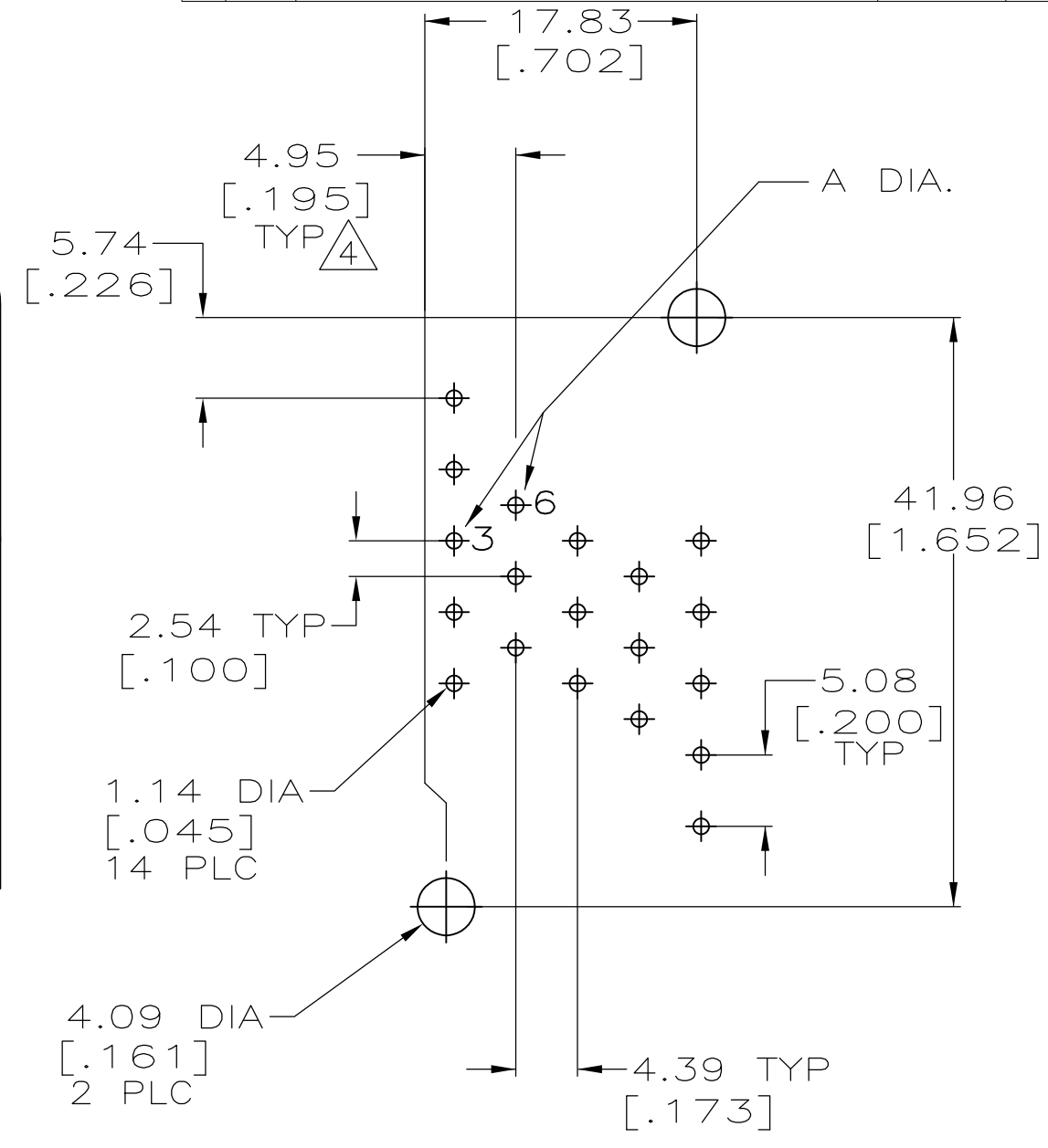
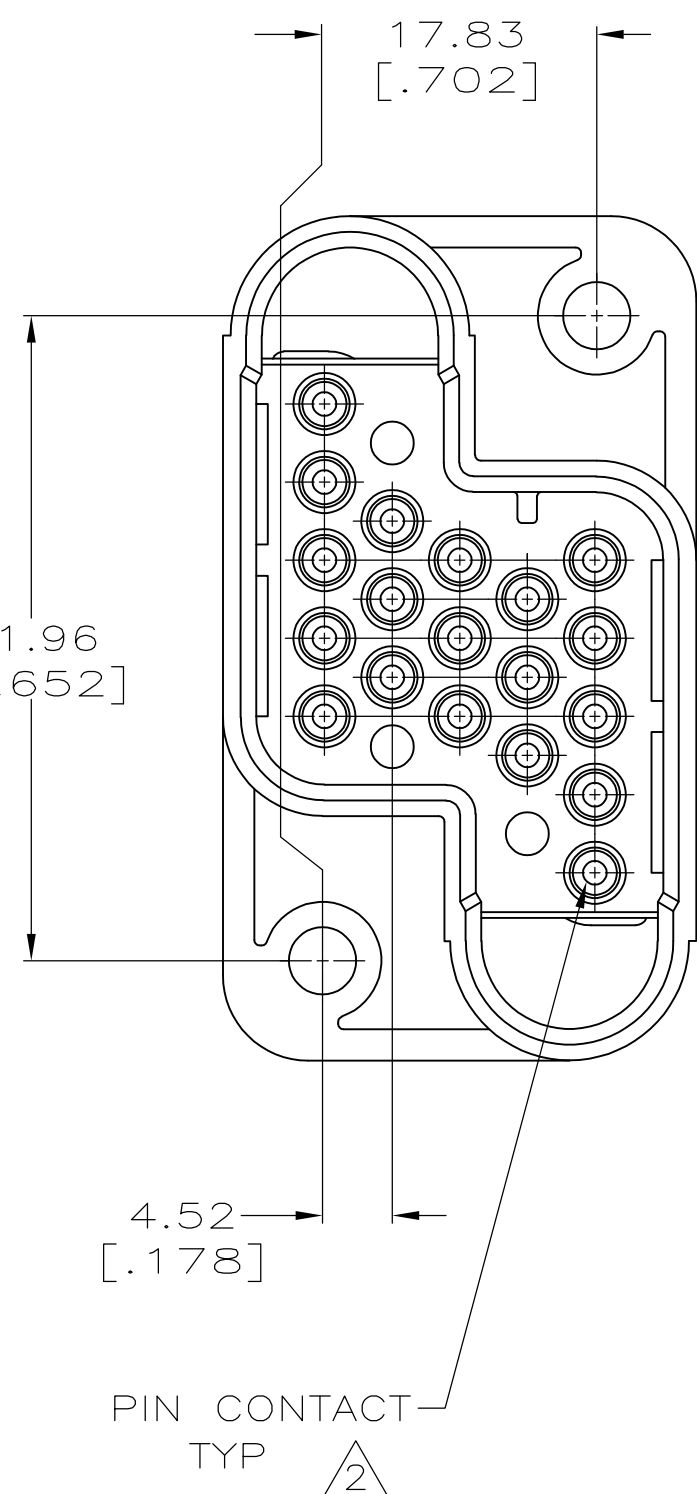
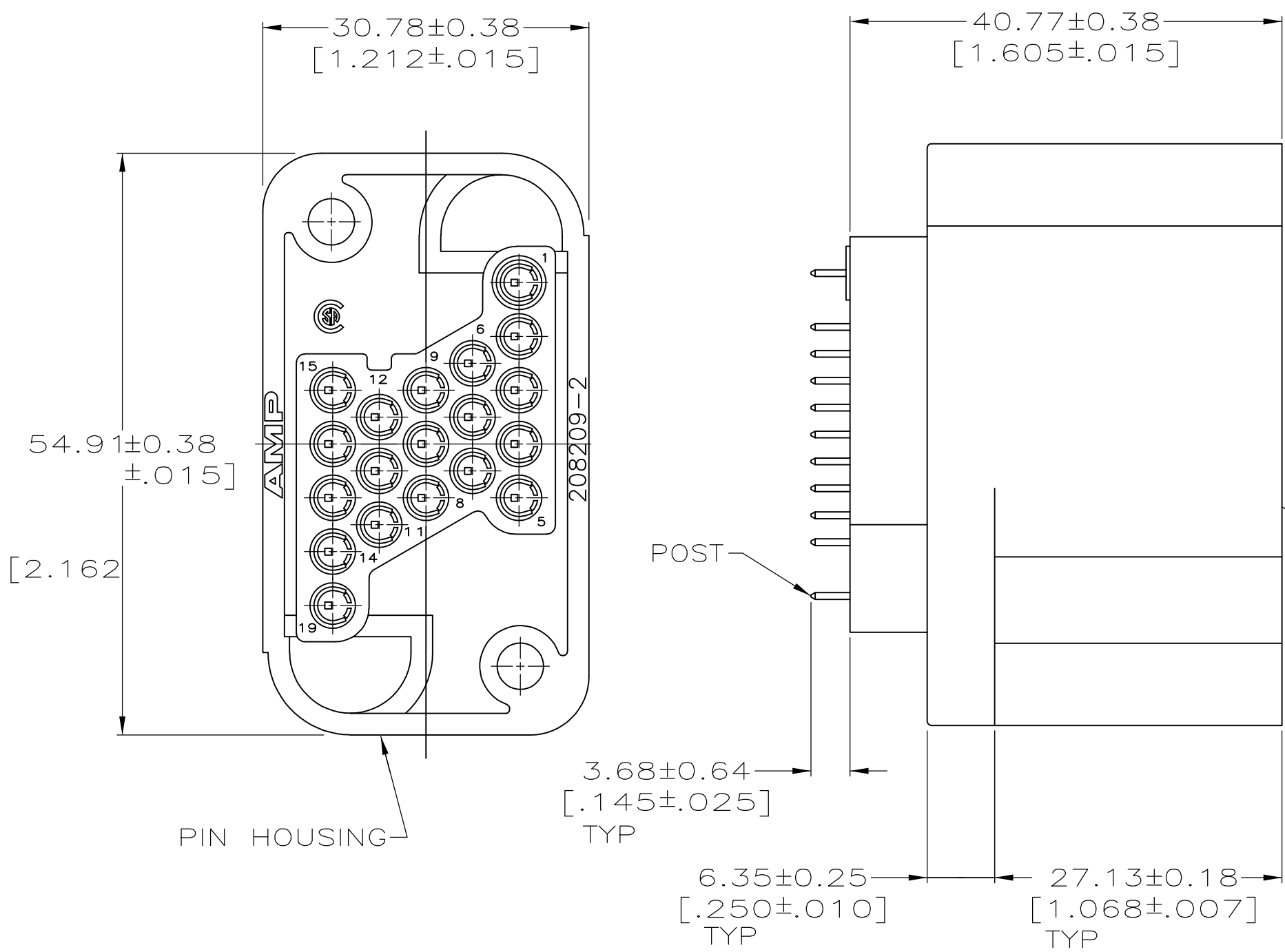


THIS DRAWING IS UNPUBLISHED. RELEASED FOR PUBLICATION
 © COPYRIGHT BY TYCO ELECTRONICS CORPORATION. ALL RIGHTS RESERVED.

LOC	DIST	REVISIONS					
FT	0	P	LTR	DESCRIPTION	DATE	DWN	APVD
		J1		REVISED PER ECO-07-002938	2/13/07	SS	GS
		J2		REVISED PER ECO-09-020689	25AUG09	KK	AEG



RECOMMENDED PC BOARD LAYOUT

- 1 ALL POSITIONS LOADED WITH POSTED SIZE 16 PIN CONTACTS EXCEPT POSITION 1.
- 2 0.76µm [.000030] MIN GOLD FOR A LENGTH OF 5.08 [.200] MIN FROM MATING END, GOLD FLASH ON THE REMAINDER, BOTH OVER 1.27 [.000050] MIN NICKEL ON PIN END. POST END 2.54 TIN-LEAD OVER 2.54.
- 3. CONTACT ASSEMBLY SHOULD BE FULLY SEATED IN HOUSING PRIOR TO SOLDERING TO PRINTED CIRCUIT BOARD.
- 4 THIS DIMENSION HAS BEEN CHANGED FROM THE STANDARD MOUNTING DIMENSION BY 0.43 [.017] DUE TO THE POSTED CONTACT.
- 5 POSTED SIZE 16 PIN CONTACTS LOADED IN POSITIONS 1,4,5,6,7,8,12,13, 14,15,16,AND 19. POSTED SIZE 16 GROUND PIN LOADED IN POSITIONS 2,3,9,10,11,17 AND 18.
- 6 SELECTIVELY LOADED IN POSITIONS 1, 2, 4, 5, 10 THRU 19 WITH POSTED CONTACT SIZE 16. POSITIONS 3 AND 6 ARE LOADED WITH A LONGER CONTACT (.045 SQUARE POST). POSITIONS 7, 8 AND 9 ARE NOT LOADED.
- 7 HOUSING: POLYESTER, BLACK
PIN CONTACT: BRASS
SPRING: STAINLESS STEEL
- 8 0.76µm [.000030] MIN GOLD FOR A LENGTH OF 5.08 [.200] MIN FROM MATING END, GOLD FLASH ON THE REMAINDER, BOTH OVER 1.27 [.000050] MIN NICKEL ON PIN END. POST END 2.54 TIN OVER 2.54.
- 9 POSTED SIZE 16 PINS LOADED IN POSITIONS 1 THRU 8 AND 12 THRU 19. POSTED SIZE 16 GROUND PINS LOADED IN POSITIONS 9, 10 AND 11.
- 10 OBSOLETE PARTS: OBSOLETE CIS STREAMLINING PER D.RENAUD/D.SINISI

FINISH	A	CONTACT LOADING	PART NO.
8	1.14 [.045]	9	213738-8
8	1.88 [.074]	6	213738-7
10 OBSOLETE 8	1.14 [.045]	5	213738-6
8	1.14 [.045]	ALL POSITIONS LOADED	213738-5
2	1.88 [.074]	6	213738-4
2	1.14 [.045]	5	213738-3
2	1.14 [.045]	ALL POSITIONS LOADED	213738-2
OBSOLETE 2	1.14 [.045]	1	213738-1

THIS DRAWING IS A CONTROLLED DOCUMENT.

DWN C. OBERMAN 10FEB92	04FEB01	Tyco Electronics Corporation Harrisburg, Pa 17105-3608
CHK R. STONE 10FEB92		
APVD A. TRAVIS 10FEB92		NAME RCPT ASSY, 19 POSITION DRAWER CONNECTOR, METRIMATE
PRODUCT SPEC		SIZE A2
APPLICATION SPEC		CAGE CODE 00779
		DRAWING NO C=213738
MATERIAL -	FINISH -	RESTRICTED TO -
		SCALE 2:1
		SHEET 1 OF 1
		REV J2

CUSTOMER DRAWING

213738

A