

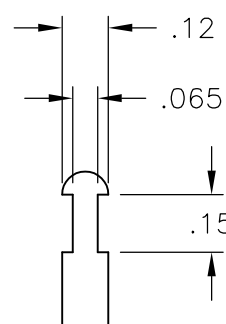
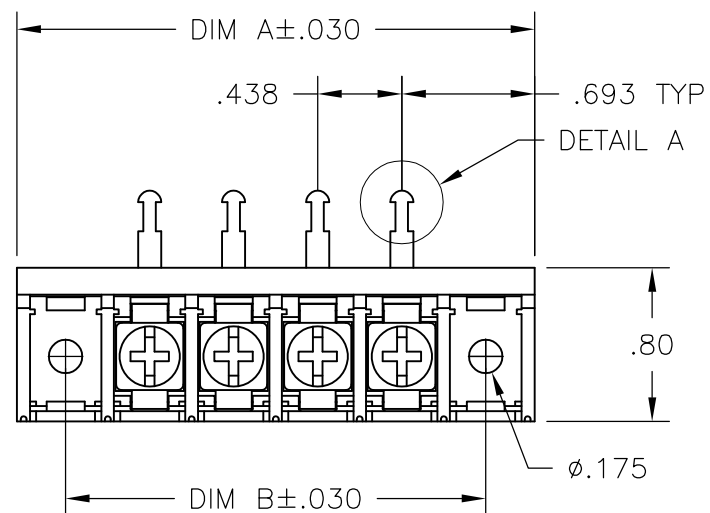
THIS DRAWING IS UNPUBLISHED. RELEASED FOR PUBLICATION  
 © COPYRIGHT BY TYCO ELECTRONICS CORPORATION. ALL RIGHTS RESERVED.

LOC	DIST	REVISIONS					
FT	0	P	LTR	DESCRIPTION	DATE	DWN	APVD
			D	REVISED PER ECO-10-004812	05MAY10	HMR	CR

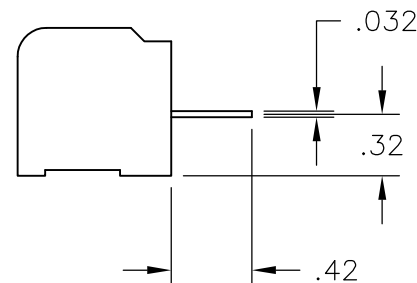
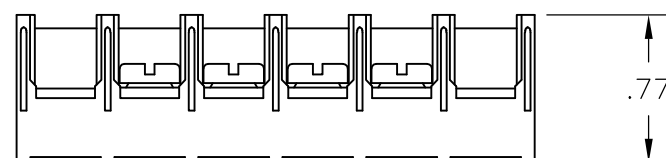
MATERIAL:  
 HOUSING: THERMOPLASTIC, UL94V-0, BLACK.  
 TERMINALS: BRIGHT TIN PLATED COPPER ALLOY.  
 SCREWS: 8-32, ZINC PLATED STEEL.

ELECTRICAL:  
 CURRENT RATING: 30A.  
 VOLTAGE RATING: 600V.  
 WIRE RANGE: 10-18 AWG (UL).  
 10-22 AWG (CSA).

MECHANICAL:  
 RECOMMENDED TORQUE: 20 IN-LB.  
 OPERATING TEMP.: -40°C TO +120°C.



DETAIL A



8.750	8.823	18	8STR-18-008	1-1546846-8
7.875	8.385	17	8STR-17-008	1-1546846-7
7.438	7.948	16	8STR-16-008	1-1546846-6
7.000	7.510	15	8STR-15-008	1-1546846-5
6.563	7.073	14	8STR-14-008	1-1546846-4
6.125	6.635	13	8STR-13-008	1-1546846-3
5.688	6.198	12	8STR-12-008	1-1546846-2
5.250	5.760	11	8STR-11-008	1-1546846-1
4.813	5.323	10	8STR-10-008	1546160-6
4.375	4.885	9	8STR-09-008	1546846-9
3.938	4.448	8	8STR-08-008	1546846-8
3.500	4.010	7	8STR-07-008	1546846-7
3.063	3.573	6	8STR-06-008	1546846-6
2.625	3.135	5	8STR-05-008	1546160-5
2.188	2.698	4	8STR-04-008	1546846-4
1.750	2.260	3	8STR-03-008	1546160-3
1.313	1.823	2	8STR-02-008	1546846-2
DIM B	DIM A	NO OF POS	CATALOG NUMBER	TE PART NO

THIS DRAWING IS A CONTROLLED DOCUMENT.		DWN	S SCHLEGEL	8/18/04	Tyco Electronics Corporation Harrisburg, PA 17105-3608		
DIMENSIONS: INCHES		CHK	S YODER	8/18/04			
TOLERANCES UNLESS OTHERWISE SPECIFIED:		APVD	S YODER	8/18/04	8STR-XX-008 ASSEMBLY		
0 PLC ± - 1 PLC ± - 2 PLC ± .02 3 PLC ± .010 4 PLC ± - ANGLES ± 2°		PRODUCT SPEC		SIZE			RESTRICTED TO
MATERIAL		APPLICATION SPEC		CAGE CODE			REV
FINISH		WEIGHT		DRAWING NO			D
-		-		A3 00779 C-1546160-3			
CUSTOMER DRAWING				SCALE	1:1	SHEET	1 OF 1