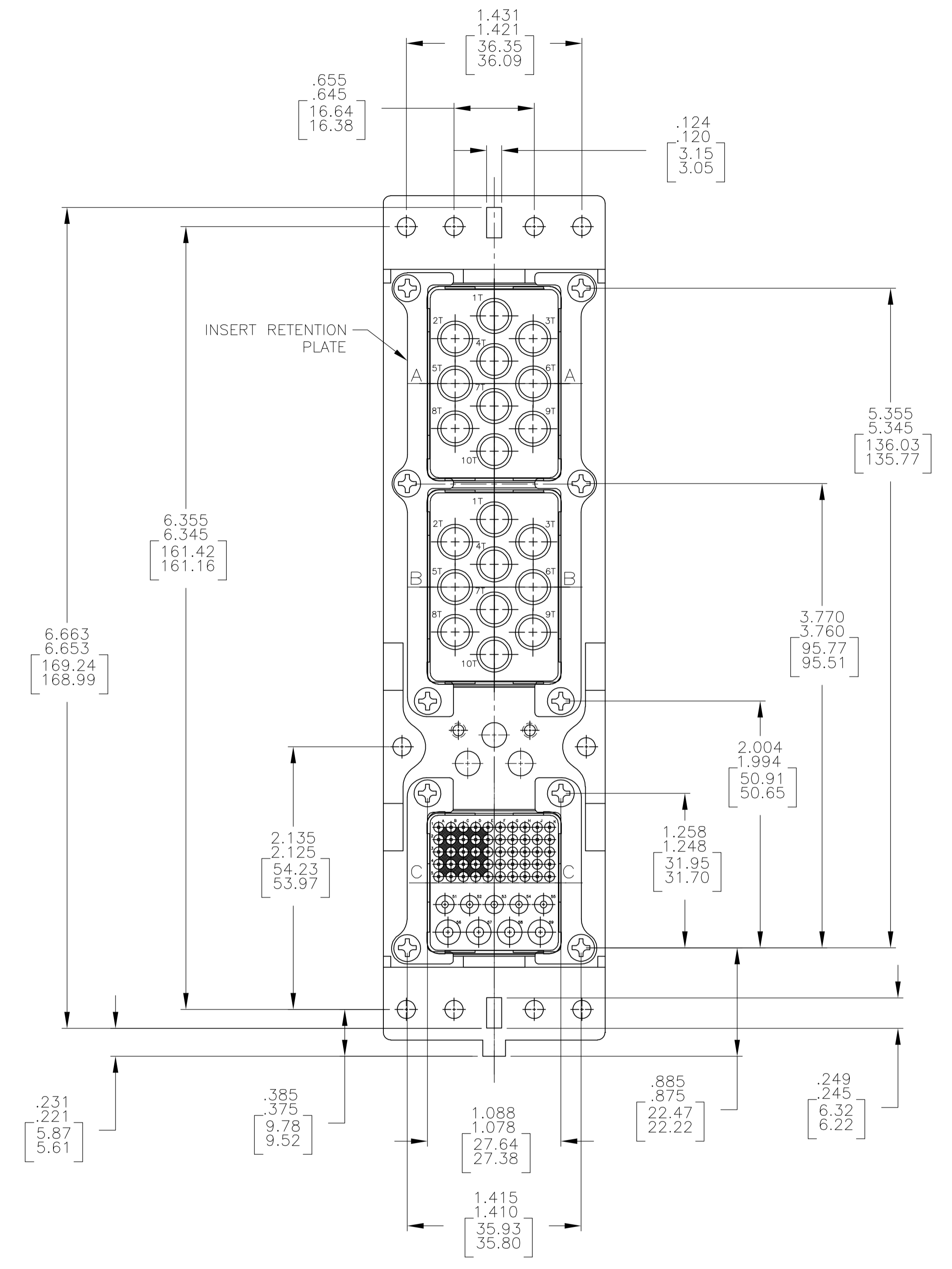
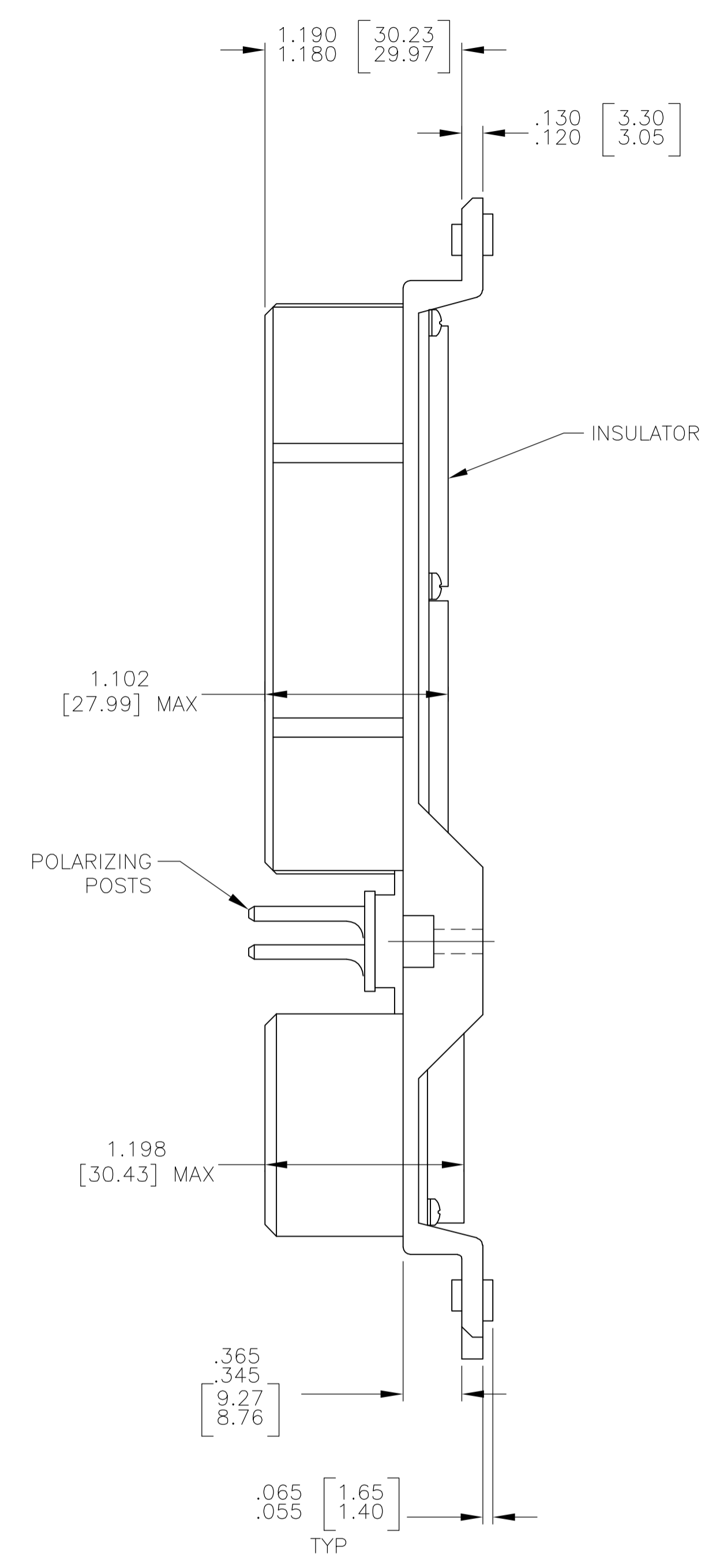
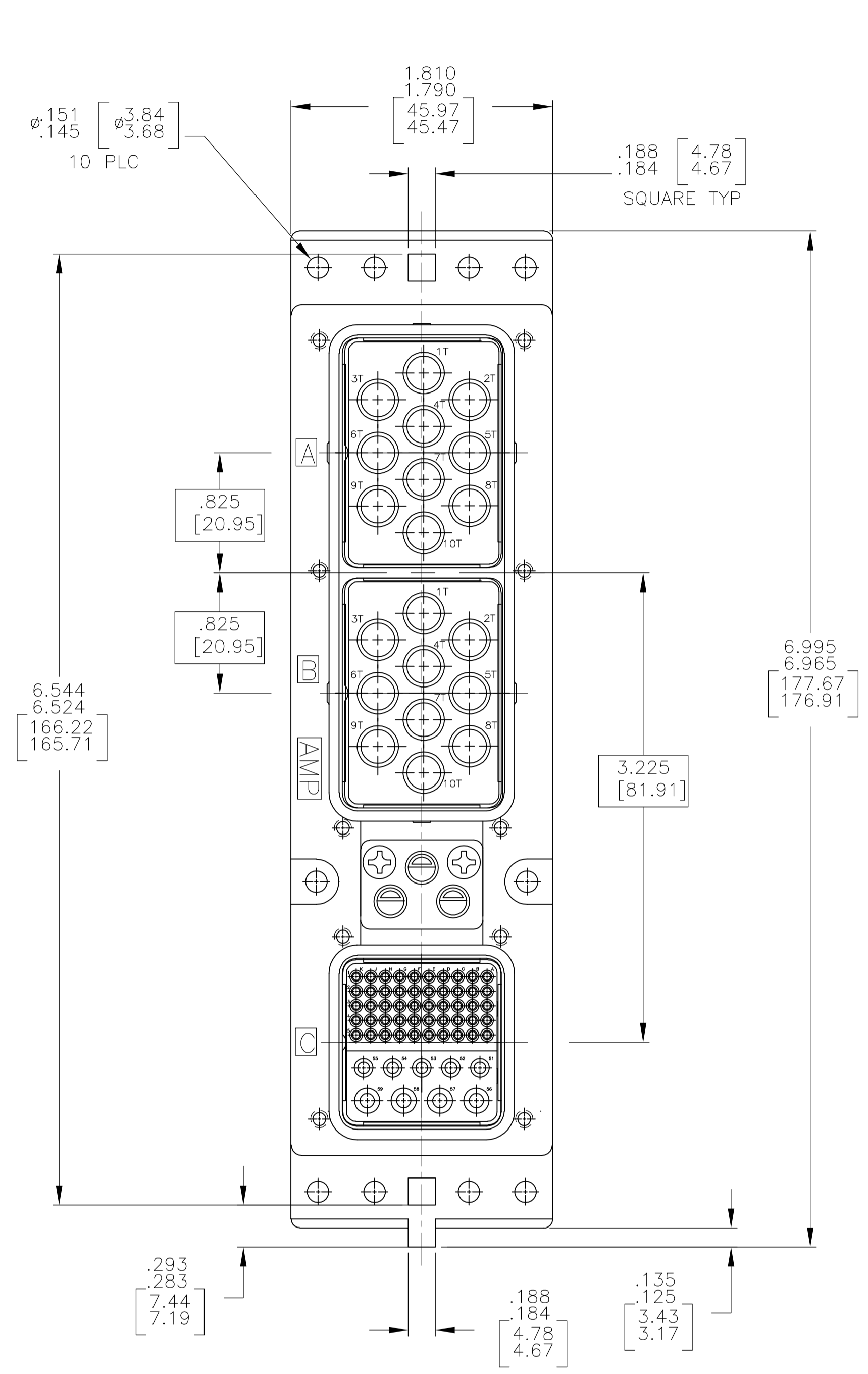


LOC		DIST		REVISIONS			
P	L/R	DESCRIPTION	DATE	BY	APPV		
B	REV PER	OH14-0641-04	9-27-04	CT	SG		



- CONNECTOR DIMENSIONS ARE PER ARINC 600 SPECIFICATION
 - FOLLOWING CONTACTS ARE INCLUDED AND NOT LOADED:
 SIZE 22 PIN CONTACT: AMP P/N 208262-3; QTY: 50
 SIZE 16 SOCKET CONTACT: AMP P/N 208270-2; QTY: 5
 SIZE 12 SOCKET CONTACT: AMP P/N 208273-2; QTY: 4
- KEYING SHOWN IN POSITION "01" FOR REFERENCE ONLY. SEE TABLE FOR KEYING POSITION. FOR POSITION "00" KEYING SHIPPED UNASSEMBLED.

COMPONENT	MATERIAL	FINISH
SHELL	DIE CAST ALUMINUM PER ASTM-B-85	CHEMICAL COVERAGE PER MIL-C-5541, CLASS 1A
RETENTION PLATES	ALUMINUM ALLOY PER ASTM-B-209	CHEMICAL COVERAGE PER MIL-C-5541, CLASS 1A
SCREWS AND LOCKWASHERS	STEEL OR STAINLESS STEEL	CHROMATE OVER ZINC OR PASSIVATED
POLARIZING POSTS	ZINC ALLOY PER ASTM-B-86	ELECTROLESS NICKEL PER MIL-C-26074, CLASS 4, GRADE B
59 POSITION INSERT	THERMOSET	-
POLARIZING POST RETAINING PLATE	ALUMINUM ALLOY PER ASTM-B-209	BLUE ANODIZED PER MIL-A-8625
10T10 INSERTS	ALUMINUM ALLOY PER ASTM-B-209	ELECTROLESS NICKEL PER MIL-C-26074

NIC66H201A02AA0		"02"	1757216-1
DESCRIPTIVE NUMBER	KEYING POSITION	PART NUMBER	
THIS DRAWING IS A CONTROLLED DOCUMENT.		DWN C.C.THOMAS 7-7-04 CHK K.HOGAN 7-7-04 APPV S.GLATFELTER 7-7-04 PRODUCT SPEC APPLICATION SPEC WEIGHT CUSTOMER DRAWING	
DIMENSIONS: INCHES 0 PLC ± - 1 PLC ± - 2 PLC ± - 3 PLC ± - 4 PLC ± - ANGLES ± -		TOLERANCES UNLESS OTHERWISE SPECIFIED: 0 PLC ± - 1 PLC ± - 2 PLC ± - 3 PLC ± - 4 PLC ± - ANGLES ± -	
MATERIAL SEE TABLE		FINISH SEE TABLE	
Tyco Electronics Corporation Harrisburg, Pa 17105-3608 NAME: PLUG ASSY, SIZE 2, ARINC 600 (10T10/10T10/59) SIZE: A1 CAGE CODE: 00779 DRAWING NO: 1757216 RESTRICTED TO: - SCALE: 1.5:1 SHEET: 1 OF 1 REV: B			