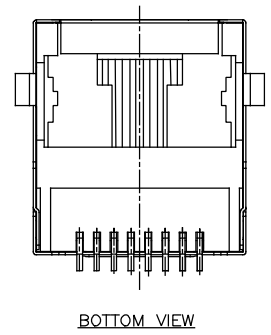
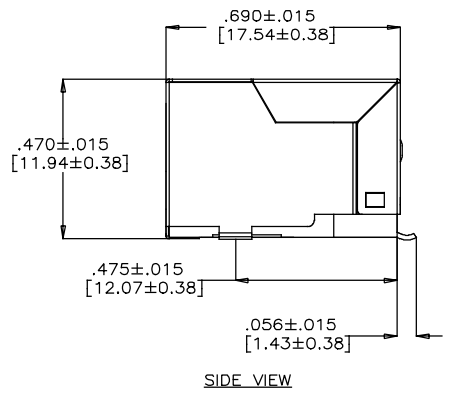
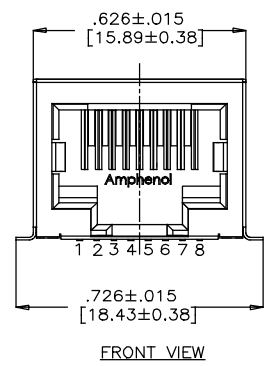


REVISIONS				
SYM	ZONE	ECN, ERN NO.	DATE	APPRD.
A		PROPOSAL	OCT.10/12	L.CHAN



**NOTES:**

**1. MATERIALS:**

HOUSING: HIGH TEMPERATURE RESISTANT NYLON.  
 FLAMMABILITY RATING UL 94V-0  
 COLOUR: SEE AMPHENOL PART NUMBER SYSTEM FOR HOUSING OPTIONS

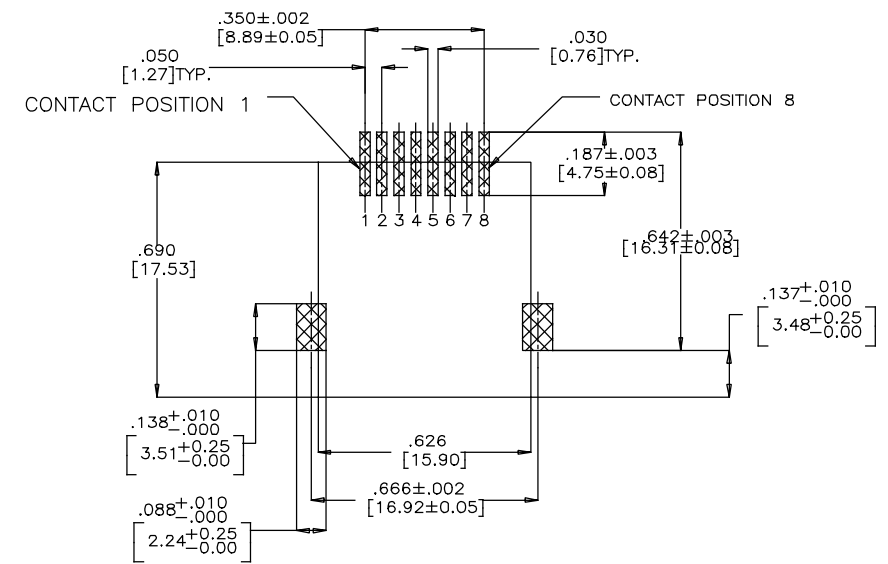
**CONTACTS: PHOSPHOR BRONZE**

PLATING: GOLD PLATING: SEE AMPHENOL PART NUMBER SYSTEM FOR PLATING OPTIONS.  
 50 MICRO" [1.27 MICRONS] MIN. NICKEL UNDERPLATE.  
 100 MICRO" [2.54 MICRONS] MIN. MATTE TIN ON CONTACT TAILS.

SHIELD: COPPER ALLOY WITH TIN PLATING OVER NICKEL UNDERPLATE.

**2. COPLANARITY SPECIFICATION:**

WITH THE MODULAR JACK SITTING ON A LEVEL SURFACE, THE MAXIMUM GAP BETWEEN THE LEVEL SURFACE AND ALL TERMINAL TAILS AND BOTH FITTING NAILS IS .004 [0.10].



AMPHENOL PART NO.: R J L S E - 4 X 1 X X - 0 1 T

GOLD PLATING  
 0=GOLD FLASH  
 1=15u" GOLD PLATING  
 2=30u" GOLD PLATING  
 3=50u" GOLD PLATING

NUMBER OF CONTACTS  
 2 = 2 CONTACTS 4 TO 5  
 4 = 4 CONTACTS 3 TO 6  
 6 = 8 CONTACTS 2 TO 7  
 8 = 8 CONTACTS 1 TO 8

HOUSING OPTION  
 1 = BLACK HOUSING  
 2 = YELLOW HOUSING  
 3 = RED HOUSING

DRAWN	G.HSIA	DATE	OCT.10/12
DESIGNED			
CHECKED	L.CHAN	DATE	OCT.10/12
I. E. APPRD.			
Q. A. APPRD.			
DWG. APPRD.			
ENG. REL. NO.			
REF.			
DIMENSIONS ARE IN	CODE ID. NO.		
INCHES [mm]	03554		

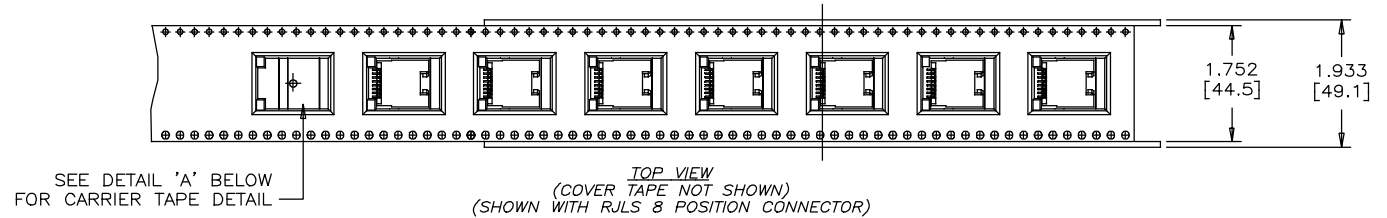
Amphenol Canada Corp.			
TITLE SURFACE MOUNT MODULAR JACK 8 POSITION, CONTACT OPTIONS, WITH SHIELD, WITH GOLD PLATING AND HOUSING OPTIONS, TAPE/REEL PACKING- RoHS COMPLIANT			
DWG	DRAWING NO.		REV.
	P-RJLSE-4X1XX-01T		A
SCALE	WT.	SURF.	SHEET 1 OF 2

THIS DOCUMENT CONTAINS PROPRIETARY INFORMATION AND SUCH INFORMATION MAY NOT BE DISCLOSED TO OTHERS FOR ANY PURPOSE OR USED FOR MANUFACTURING PURPOSES WITHOUT WRITTEN PERMISSION FROM AMPHENOL CANADA CORP.



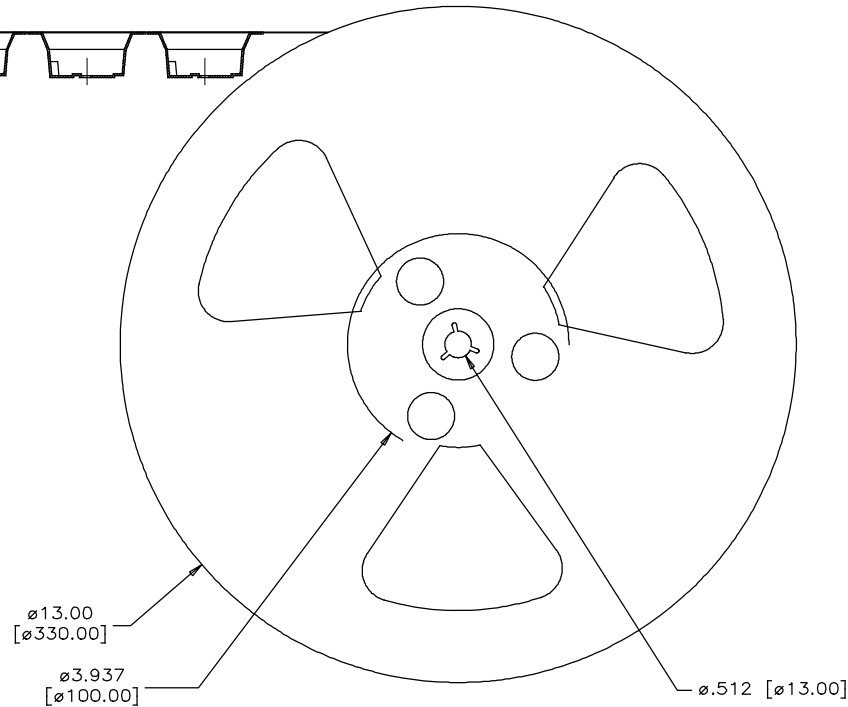
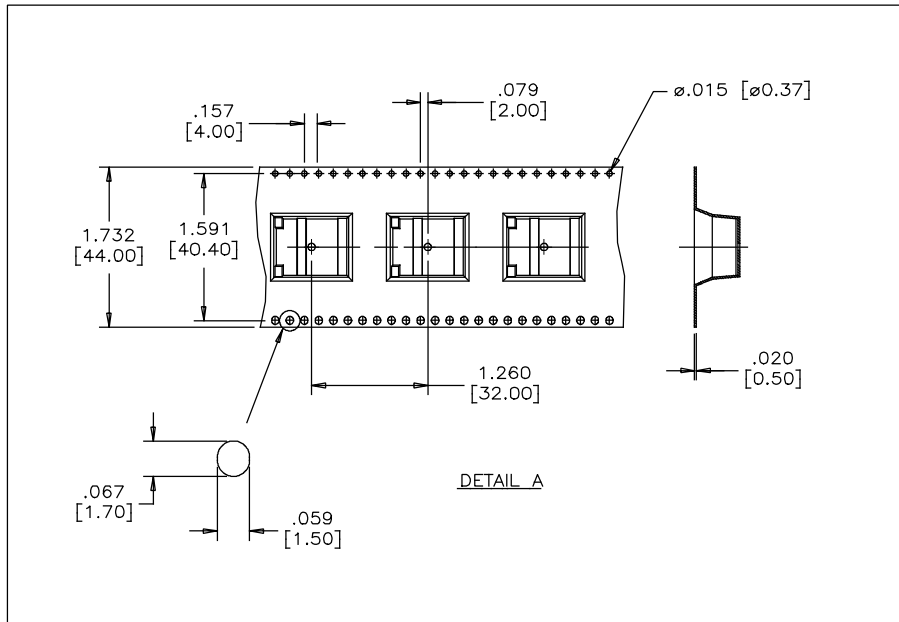
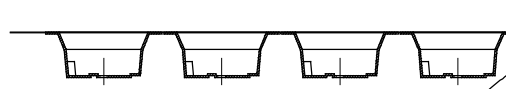
REVISIONS				
SYM	ZONE	ECN, ERN NO.	DATE	APPRD.
A		PROPOSAL	OCT10/12	L.CHAN

← DIRECTION OF CONNECTOR LOADED INTO MACHINE.  
LEADS FACING FRONT SIDE



PACKAGING NOTES:

- ONE REEL SHOULD HOLD 150 CONNECTORS.
- 25 EMPTY CAVITIES FOR CARRIER TAPE LEADER & 15 EMPTY CAVITIES FOR CARRIER TAPE TRAILER.
- A FULLY LOADED CARTON SHOULD CONTAIN 5 REELS (750 PCS) OF CONNECTORS.



DRAWN	G.HSIA	DATE	OCT10/12
DESIGNED			
CHECKED	L.CHAN	DATE	OCT10/12
I. E. APPRD.			
Q. A. APPRD.			
DWG. APPRD.			
ENG. REL. NO.			
REF.			
DIMENSIONS ARE IN	CODE ID. NO.		
INCHES [mm]	03554		

Amphenol Canada Corp.			
TITLE SURFACE MOUNT MODULAR JACK 8 POSITION, CONTACT OPTIONS, WITH SHIELD, WITH GOLD PLATING AND HOUSING OPTIONS, TAPE/REEL PACKING- RoHS COMPLIANT			
DWG.	DRAWING NO.		REV.
	P-RJLSE-4X1XX-01T		A
SCALE	NTS	WT.	SURF.
			SHEET 2 OF 2

THIS DOCUMENT CONTAINS PROPRIETARY INFORMATION AND SUCH INFORMATION MAY NOT BE DISCLOSED TO OTHERS FOR ANY PURPOSE OR USED FOR MANUFACTURING PURPOSES WITHOUT WRITTEN PERMISSION FROM AMPHENOL CANADA CORP.