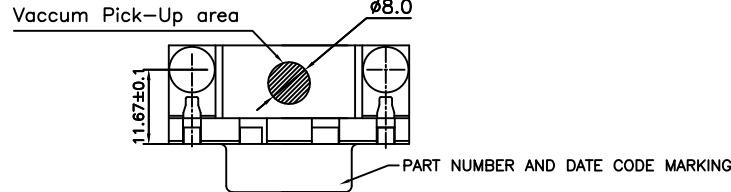




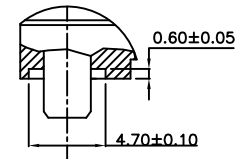
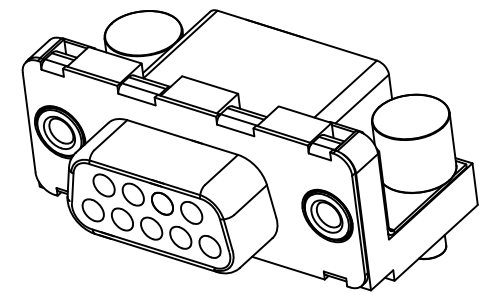
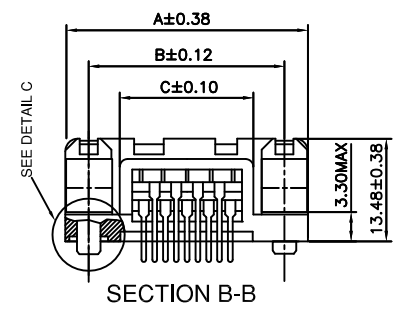
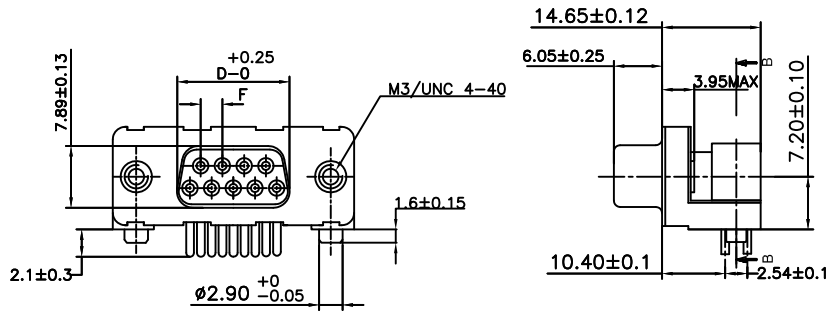
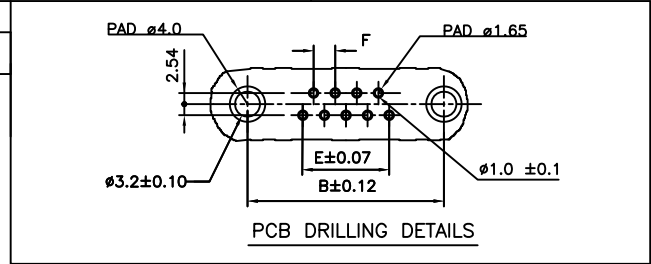
FCIconnect.com

Copyright FCI

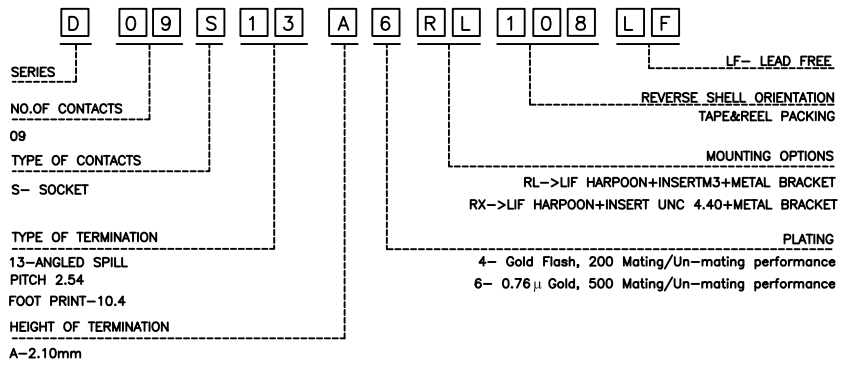
D



09	30.81	24.99	16.96	16.21	11.04	2.76
SHELL	A±0.38	B±0.12	C±0.10	D ^{+0.25} ₋₀	E±0.07	F



ORDERING INFORMATION



PRODUCT SPECIFICATION
See :- GS-12-433

PACKAGING SPECIFICATION
See :- GS-14-1139

"This product meets European Union Directives and other country regulations as described in GS-47-0004"

The housing will withstand exposure to 260°C peak temperature for 30 seconds in a convection, infra-red or vapor reflow oven solder application.

Packaging as per GS-14-920

TRUE POSITION : $\varnothing \varnothing 0.36$

mat'l. code SEE TECH.SPEC				surface ISO 1302		tolerance ISO 406 ISO 1101		projection		product family DELTA-D	
ltr	ecn no	dr	date	tolerances unless otherwise specified		linear		MM		title	
A	110-0088	NG	2010/04/08	angles						REVERSE DELTA-D A/S FEMALE PIP CONNECTOR	
B	110-0249	NG	2010/12/29	0°±1°						EUROPE VERSION	
C	ELX-I-19023	AB	2014/10/11					scale -		dwg no	
D	ELX-I-21007	AB	2015/06/03	dr		GEORGE.V.JOSEPH		2005/12/19		sheet 1 of 1	
				enrg		ALIAS.BABU		2014/10/11		A3	
				chr		MITHUN.PAUL		2014/10/11		C-DD-0097	
				appd		BIJU.K.PAUL		2014/10/11		type Product Customer Drawing	
sheet index		revision sheet		D							
		1									