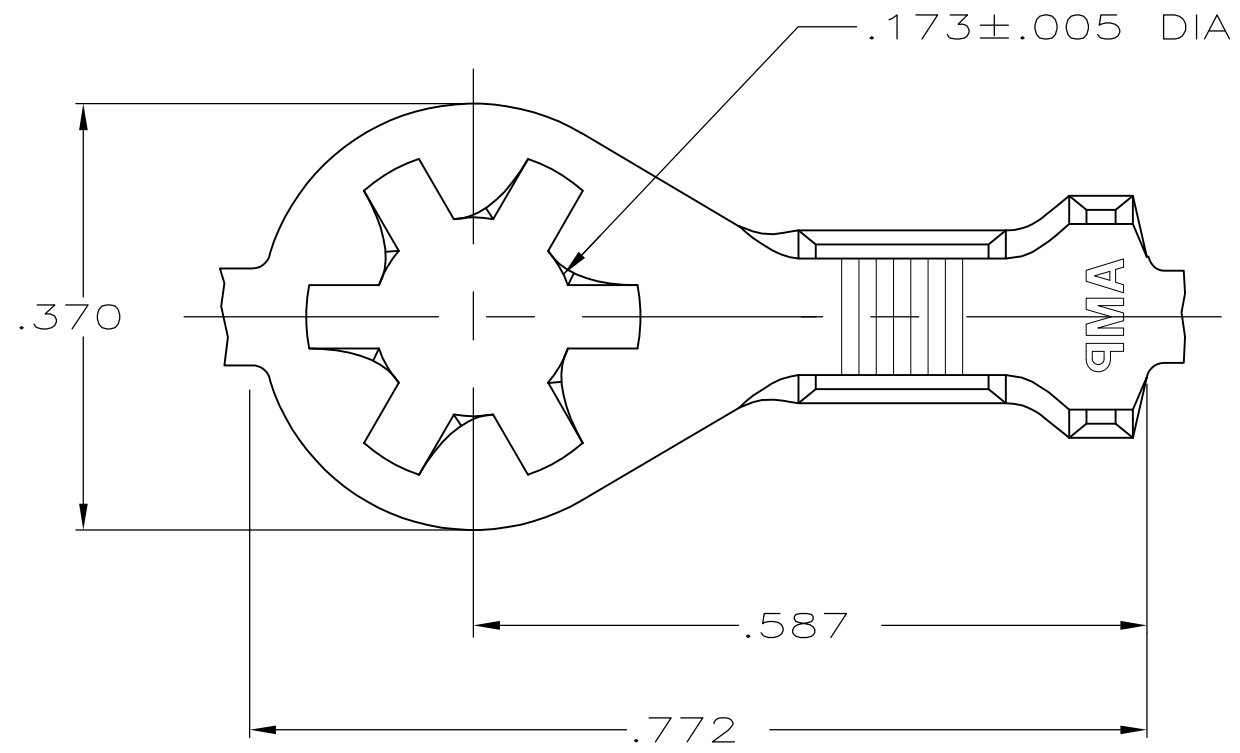
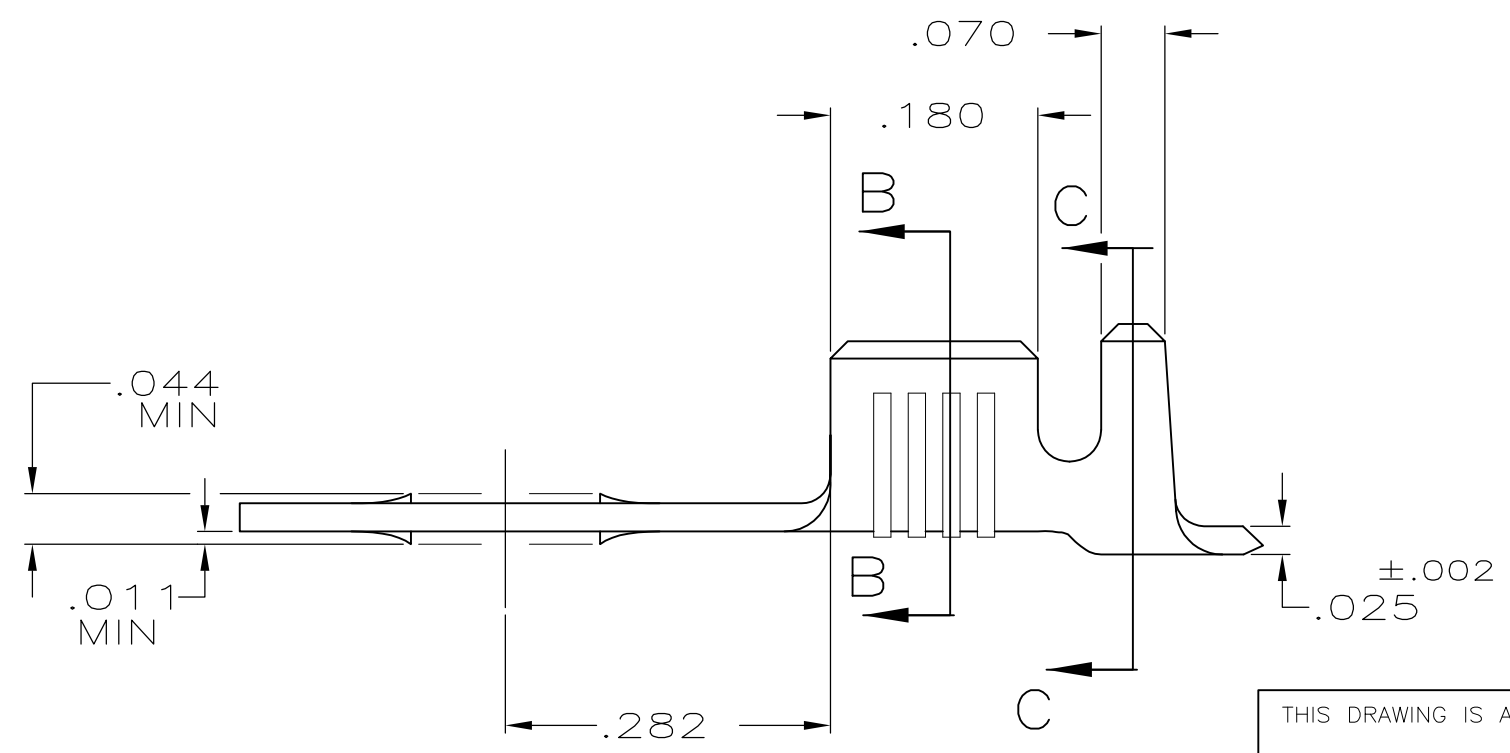
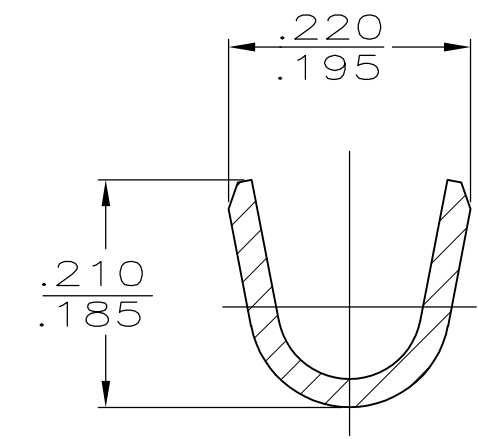
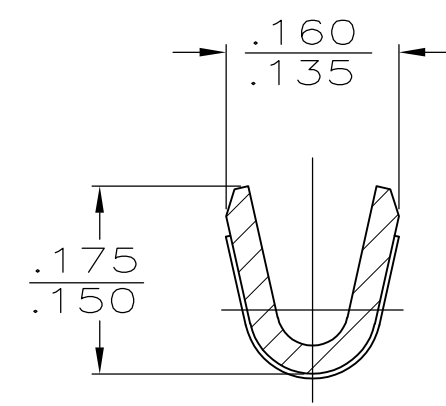


THIS DRAWING IS UNPUBLISHED. RELEASED FOR PUBLICATION
 © COPYRIGHT - By - ALL RIGHTS RESERVED.

LOC	DIST	REVISIONS					
		P	LTR	DESCRIPTION	DATE	DWN	APVD
AF	50		T1	REVISED PER ECO-11-004587	11MAR11	RK	HMR



- 1 CONTINUOUS STRIP ON REELS
- 2 REELED WITH PAPER
- 3 .000080 MIN TIN PL PER MIL-T-10727.
- 4 PRELIMINARY - NOT FOR PRODUCTION



4	3	T4 BRASS	.105-.145	18-14	61794-7
2	3	T2 STEEL	.105-.145	18-14	61794-6
		T4 BRASS	.105-.145	18-14	61794-4
		NICKEL PL	.105-.145	18-14	61794-3
		T2 STEEL	.105-.145	18-14	61794-2
	3	T2 STEEL	.105-.145	18-14	61794-1
FINISH		MATERIAL	INSULATION RANGE	WIRE SIZE	PART NO

THIS DRAWING IS A CONTROLLED DOCUMENT.

DWN	D HOLLINGSWORTH	5/15/87	STE TE Connectivity
CHK	G YETTER	11/23/87	
APVD	RP FRANTZ	12/2/87	
NAME			
DIMENSIONS:	TOLERANCES UNLESS OTHERWISE SPECIFIED:	RING	
INCHES	0 PLC ± -	SIZE	
	1 PLC ± -	CAGE CODE	
	2 PLC ± -	DRAWING NO	
	3 PLC ± .015	RESTRICTED TO	
	4 PLC ± -	A300779 C-61794	
	ANGLES ± -	SCALE	
MATERIAL	FINISH	SHEET	
SEE TABLE	SEE TABLE	1 OF 1	
CUSTOMER DRAWING		REV T1	