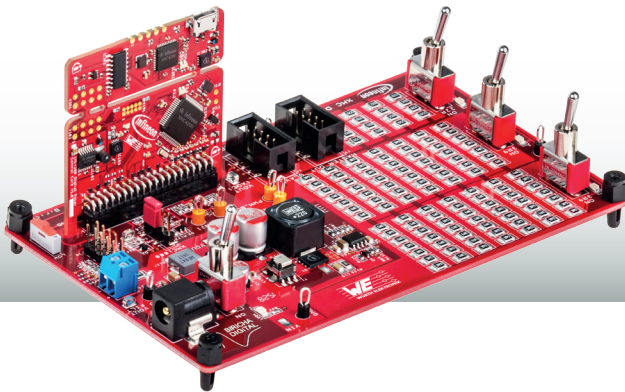


# Digital Power is calling!

## XMC Digital Power Explorer Kit



**Order Code IC-744 726**  
**Version 1.0**

### Key Benefits

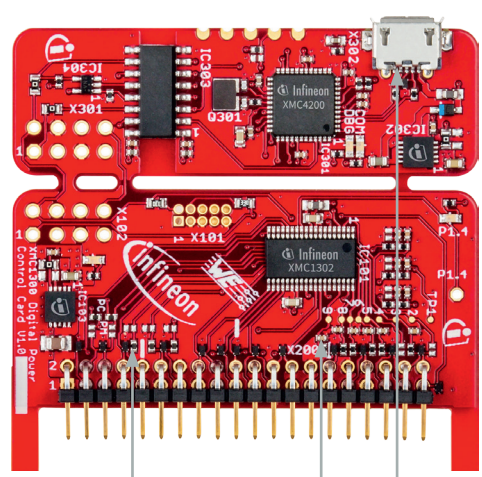
- Easy entry into digital power control
- Best in class passive components
- Voltage mode control and peak current mode control (with slope compensation) available
- Full software support





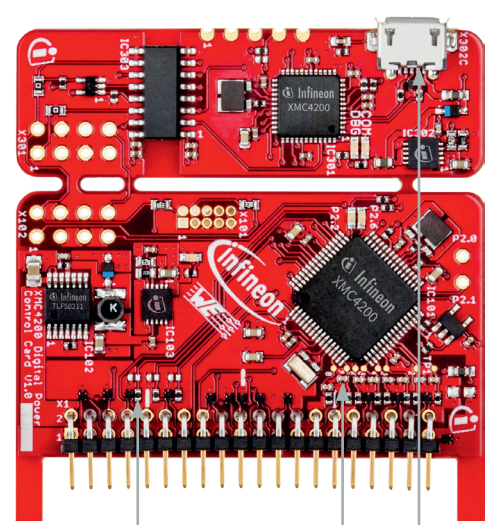
## Control Cards – Component overview

**XMC1300**  
ARM® Cortex® – M0 MCU



- WE-CBF  
**Chip Beads**
- WCAP-CSGP  
**Ceramic Capacitors**
- WR-COM  
**Micro USB**

**XMC4200**  
ARM® Cortex® – M4F MCU



- WE-CBF  
**Chip Beads**
- WCAP-CSGP  
**Ceramic Capacitors**
- WR-COM  
**Micro USB**

### Key Features

- High resolution PWM (150ps) and smart analog comparators on XMC4200
- PMBus™ communication option
- On board resistive load banks

# Würth Elektronik more than you expect



## EMC Components – Chip Bead Ferrites

- WE-CBF SMD EMI Suppression Ferrite Bead

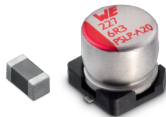


## Connectors

- WR-BHD 2.54 mm Male SMT Box Header
- WR-TBL Serie 1031 – 3.50 mm Horiz. Entry Modular
- WR-DC Power Jack Right Angled SMT Ø 6.4 with pegs
- WR-PHD 2.54 mm THT Dual Pin Header
- WR-PHD 2.54 mm SMT Pin Header
- WR-PHD 2.00 mm Dual Socket Header

## Capacitors

- WCAP-CSGP Ceramic Capacitors
- WCAP-ASLL Aluminum Electrolytic Capacitors



## Switches

- WS-SLTV Slide Switch  
10 x 2.5 mm THT



## Power Magnetics - Power Inductors

- WE-LHMI SMD Power Inductor
- WE-PD SMD Shielded Power Inductor



## Assembly

- WA-SNTI Plastic Spacer Stud,  
metric, Thread Clip



## Transformers

- WE-CST Current Sense Transformer



## LED

- WL-SMCW SMD chip LED top view  
mono-color waterclear



Würth Elektronik offers more complete solutions, such as sample kits with continuous free re-fills, EMC lab support, seminars, technical design books and much more! Want more info about your kit?

Please visit [www.we-online.com/digital-power-is-calling](http://www.we-online.com/digital-power-is-calling)

