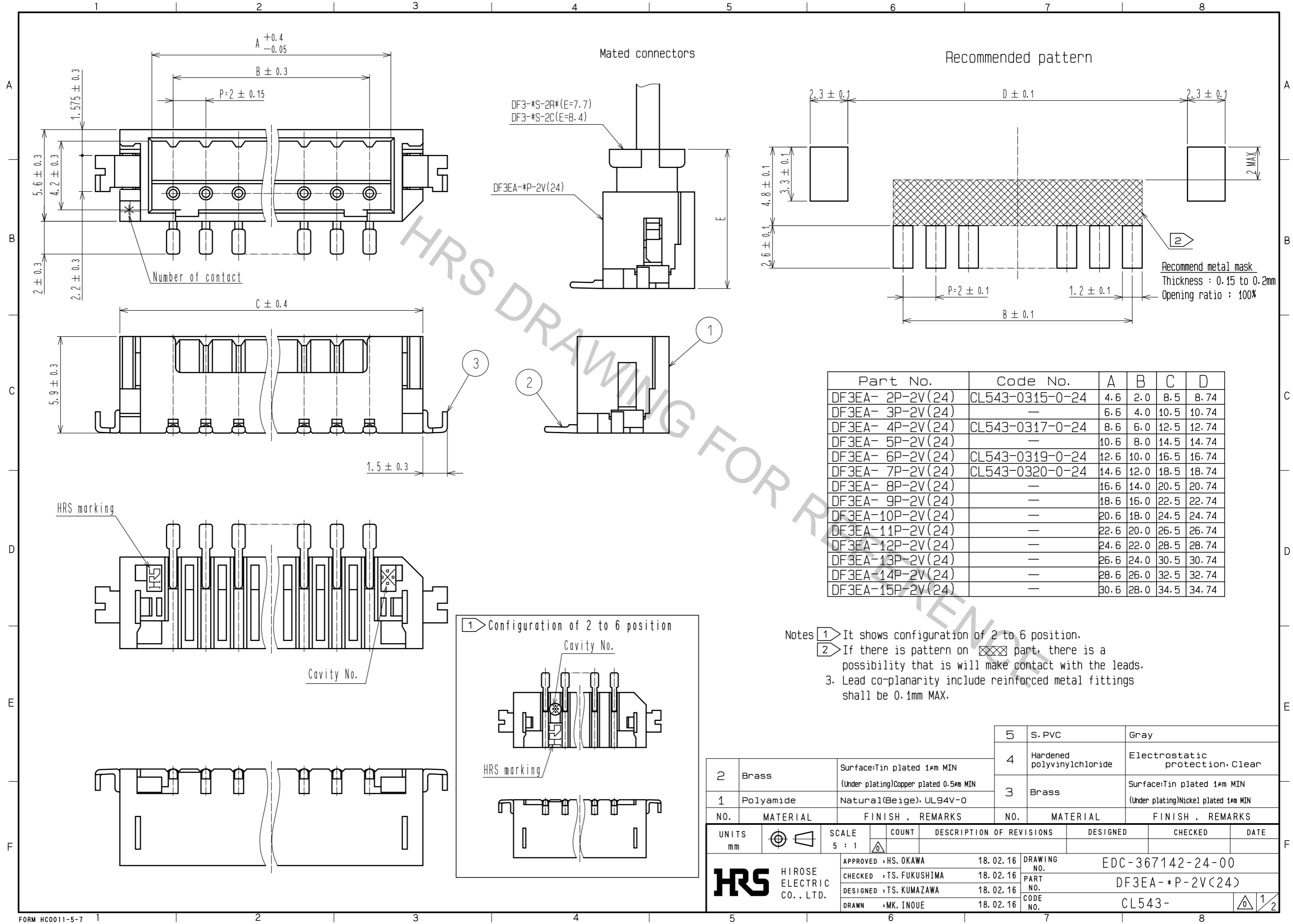


Aug.1.2018 Copyright 2018 HIROSE ELECTRIC CO., LTD. All Rights Reserved.
 In case that the application demands a high level of reliability, such as automotive,
 please contact a company representative for further information.



Part No.	Code No.	A	B	C	D
DF3EA- 2P-2V(24)	CL543-0315-0-24	4.6	2.0	8.5	8.74
DF3EA- 3P-2V(24)	—	6.6	4.0	10.5	10.74
DF3EA- 4P-2V(24)	CL543-0317-0-24	8.6	6.0	12.5	12.74
DF3EA- 5P-2V(24)	—	10.6	8.0	14.5	14.74
DF3EA- 6P-2V(24)	CL543-0319-0-24	12.6	10.0	16.5	16.74
DF3EA- 7P-2V(24)	CL543-0320-0-24	14.6	12.0	18.5	18.74
DF3EA- 8P-2V(24)	—	16.6	14.0	20.5	20.74
DF3EA- 9P-2V(24)	—	18.6	16.0	22.5	22.74
DF3EA-10P-2V(24)	—	20.6	18.0	24.5	24.74
DF3EA-11P-2V(24)	—	22.6	20.0	26.5	26.74
DF3EA-12P-2V(24)	—	24.6	22.0	28.5	28.74
DF3EA-13P-2V(24)	—	26.6	24.0	30.5	30.74
DF3EA-14P-2V(24)	—	28.6	26.0	32.5	32.74
DF3EA-15P-2V(24)	—	30.6	28.0	34.5	34.74

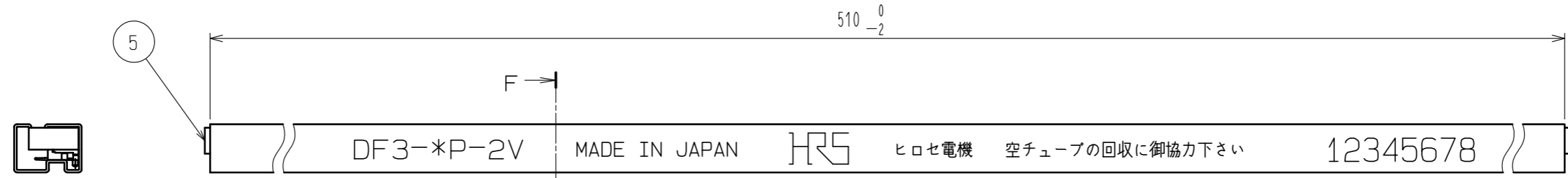
- Notes
- 1 It shows configuration of 2 to 6 position.
 - 2 If there is pattern on part, there is a possibility that it will make contact with the leads.
 - 3. Lead co-planarity include reinforced metal fittings shall be 0.1mm MAX.

NO.	MATERIAL	FINISH	REMARKS	NO.	MATERIAL	FINISH	REMARKS
2	Brass	Surface: Tin plated 1μm MIN (Under plating) Copper plated 0.5μm MIN		5	S. PVC		Gray
1	Polyamide	Natural(Beige), UL94V-0		4	Hardened polyvinylchloride		Electrostatic protection, Clear
				3	Brass	Surface: Tin plated 1μm MIN (Under plating) Nickel plated 1μm MIN	

UNITS	SCALE	COUNT	DESCRIPTION OF REVISIONS	DESIGNED	CHECKED	DATE
mm	5 : 1	△				

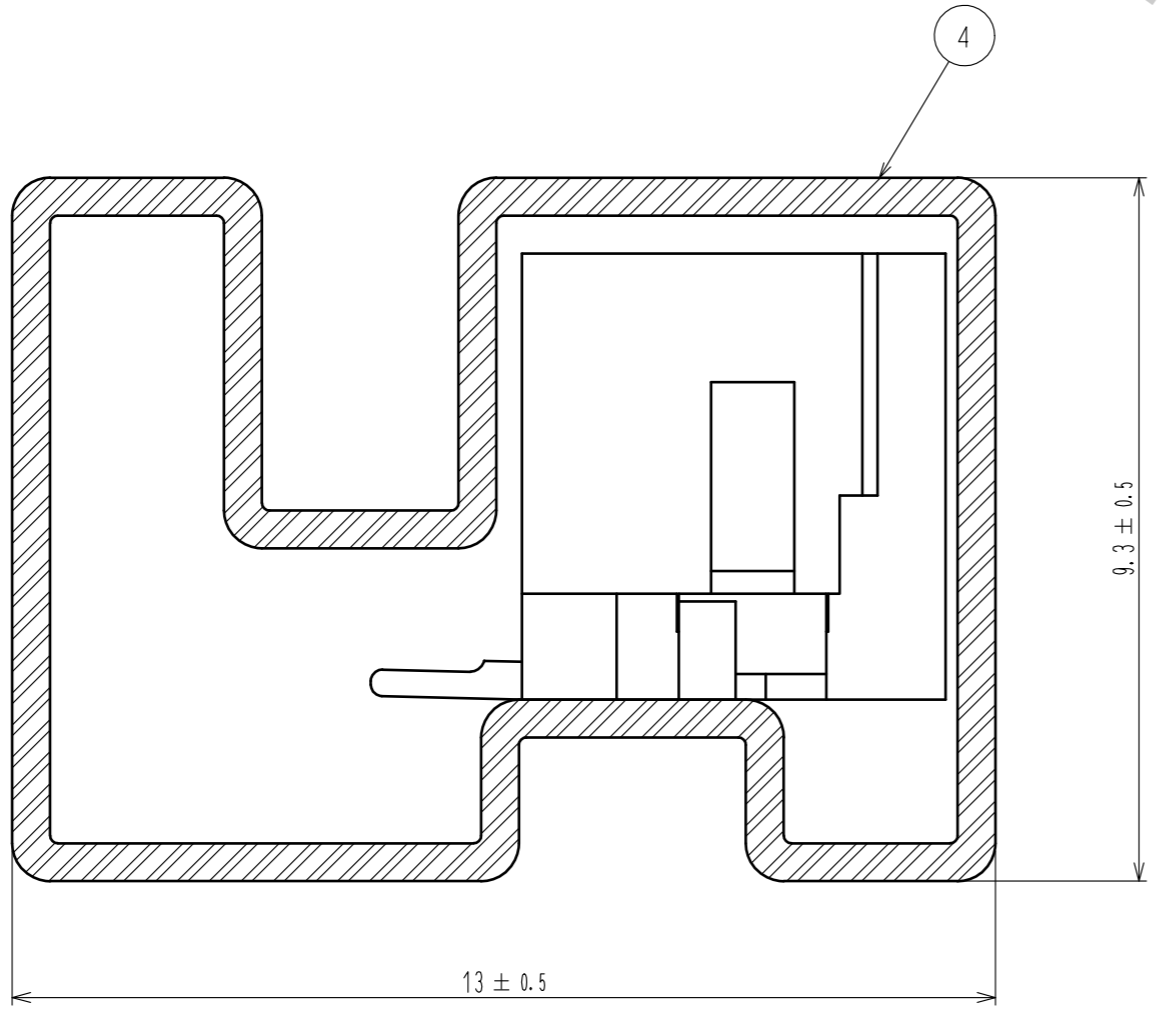
APPROVED	: HS. OKAWA	18.02.16	DRAWING NO.	EDC-367142-24-00
CHECKED	: TS. FUKUSHIMA	18.02.16	PART NO.	DF3EA-*P-2V(24)
DESIGNED	: TS. KUMAZAWA	18.02.16	CODE NO.	CL543-
DRAWN	: MK. INOUE	18.02.16		

Aug.1.2018 Copyright 2018 HIROSE ELECTRIC CO., LTD. All Rights Reserved.
 In case that the application demands a high level of reliability, such as automotive,
 please contact a company representative for further information.



Notes 4. Number of connectors per a magazine case shall be in accordance with the list.
 5. These connectors shall be on sated in accordance with the multiple quantity on the list.

F-F (10:1)



Part No.	Code No.	Number of connectors
DF3EA- 2P-2V(24)	CL543-0315-0-24	41
DF3EA- 3P-2V(24)	—	34
DF3EA- 4P-2V(24)	CL543-0317-0-24	30
DF3EA- 5P-2V(24)	—	26
DF3EA- 6P-2V(24)	CL543-0319-0-24	23
DF3EA- 7P-2V(24)	CL543-0320-0-24	21
DF3EA- 8P-2V(24)	—	19
DF3EA- 9P-2V(24)	—	18
DF3EA-10P-2V(24)	—	17
DF3EA-11P-2V(24)	—	15
DF3EA-12P-2V(24)	—	14
DF3EA-13P-2V(24)	—	14
DF3EA-14P-2V(24)	—	13
DF3EA-15P-2V(24)	—	12

HRS	DRAWING NO.	EDC-367142-24-00
	PART NO.	DF3EA-*P-2V(24)
	CODE NO.	CL543-

2/2