

THIS DRAWING IS UNPUBLISHED.

RELEASED FOR PUBLICATION

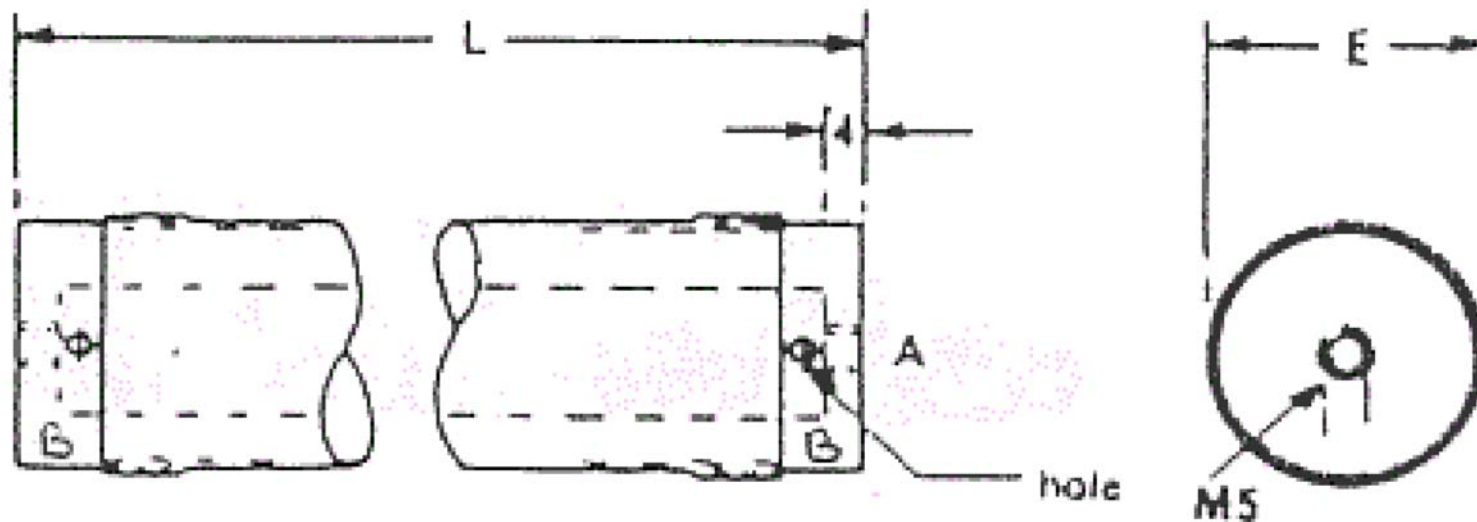
OCT ,2005.

© COPYRIGHT 2005 BY TYCO ELECTRONICS CORPORATION. ALL RIGHTS RESERVED.

| LOC | DIST | REVISIONS   |               |         |       |
|-----|------|-------------|---------------|---------|-------|
| P   | LTR  | DESCRIPTION | DATE          | DWN     | APVD  |
| E   | B    | B           | ECR-06-013885 | 08JUN06 | DK JC |

A: 17.5  
 E: 30  
 L: 260

All dimensions in mm.  
 (Nominal values only)



DESCRIPTION:  
 LEAD MATERIAL:  
 LEAD CROSS-SECTION:  
 HYBRID PROTECTION:  
 MARKING:

HIGH VOLTAGE TUBULAR RESISTOR  
 BRASS  
 SEE DIAGRAM ABOVE  
 ORGANIC ENCAPSULATION  
 TYCO CGS VAL TOL DATECODE HVRX50D

NOTE: X REPLACED WITH M FOR MEADERED TRACK OR L FOR LINEAR TRACK

FOR A SPECIFIC PN FOR A RESISTANCE VALUE AND TOLERANCE, PLEASE REFER TO DMF.

RoHS Compliant

|  |  |                                |  |            |
|--|--|--------------------------------|--|------------|
| THIS DRAWING IS A CONTROLLED DOCUMENT. |  | DWN<br>DAVE KENNEDY<br>25OCT05 | <b>tyco</b><br>Tyco Electronics Corporation    |            |
| DIMENSIONS:<br>MM                      |  | CHK<br>J CATCHPOLE<br>25OCT05  | <b>Electronics</b><br>Dorcan, Swindon, SN3 5HH |            |
| TOLERANCES UNLESS OTHERWISE SPECIFIED: |  | APVD<br>J CATCHPOLE<br>25OCT05 | NAME<br>HVR50D                                 |            |
| 0 PLC ± 0.5                            |  | PRODUCT SPEC                   | -  |            |
| 1 PLC ± 0.2                            |  | APPLICATION SPEC               | -  |            |
| 2 PLC ± 0.1                            |  | WEIGHT                         | -  |            |
| 3 PLC ± -                              |  | SIZE                           | CAGE CODE                                      | DRAWING NO |
| 4 PLC ± -                              |  | A3                             | 00779  | C-1625957  |
| ANGLES ± 5                             |  | RESTRICTED TO                  |  |            |
| FINISH                                 |  | -                              |  |            |
| MATERIAL                               |  | CUSTOMER DRAWING               |  |            |
| -                                      |  | SCALE                          | SHEET  | REV        |
| -                                      |  | NTS                            | 1 OF 1   | B          |