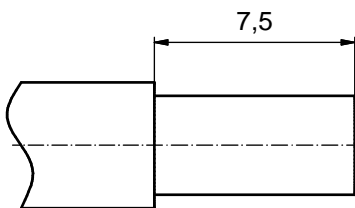


NOTES:

CRIMPING:
 USE CRIMP TOOL: 360X10409X
 WITH TOOL INSERT: 360X20029X
 SELECTOR SETTINGS: 7 FOR AWG 10
 6 FOR AWG 12

| plating | part no. |
|--|-------------------|
| GOLD FLASH over NICKEL | 131A11039X |
| 30µin HARD GOLD over min. 50µin NICKEL | 131C11039X |
| 50µin HARD GOLD over min. 50µin NICKEL | 131J11039X |

STRIPPING DIMENSIONS



Directive 2002/95/EC RoHS compliant

| pos | qty | description | material | plating |
|-----|-----|----------------|--------------|------------------------|
| 3 | 1 | RETAINING RING | COPPER ALLOY | NICKEL PLATED |
| 2 | 1 | REAR SIDE | COPPER ALLOY | GOLD FLASH over NICKEL |
| 1 | 1 | MATING SIDE | COPPER ALLOY | see table |

| partlist | | | | | tolerance | dim. in mm | scale: | | |
|----------|--|--|--|--|--------------|---------------------|------------------------|--|-----------|
| | | | | | | | 8:1 | | |
| | | | | | | | material: see partlist | | |
| | | | | | date | name | title: | | |
| | | | | | drawn | 12.07.12 | Schmidt | HIGH POWER CONTACT MALE CRIMP VERSION 30A FOR AWG 10-12 D-SUB COMBINATION | |
| | | | | | appd. | 12.07.12 | Koch | | |
| | | | | | norm | | | | |
| | | | | | d-old | 13K11D3A / 13K21D3A | | dwg no: | |
| | | | | | CONEC | | | 13K1A4010 | DIN-A3 |
| | | | | | | | | part no: | see table |

THIS DRAWING MAY NOT BE COPIED OR REPRODUCED IN ANY WAY, AND MAY NOT BE PASSED ON TO A THIRD PARTY WITHOUT WRITTEN PERMISSION. OWNERSHIP AND COPYRIGHT OF CONEC GmbH DO NOT ALTER CAD DRAWING BY HAND

| rev. | description | date | name |
|-------|-------------|----------|------|
| 1 x b | A4380 | 12.07.12 | HS |
| a | Original | | |