

MATERIALS AND FINISHES

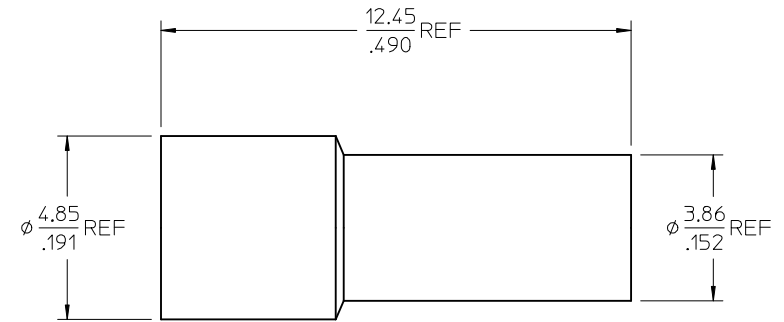
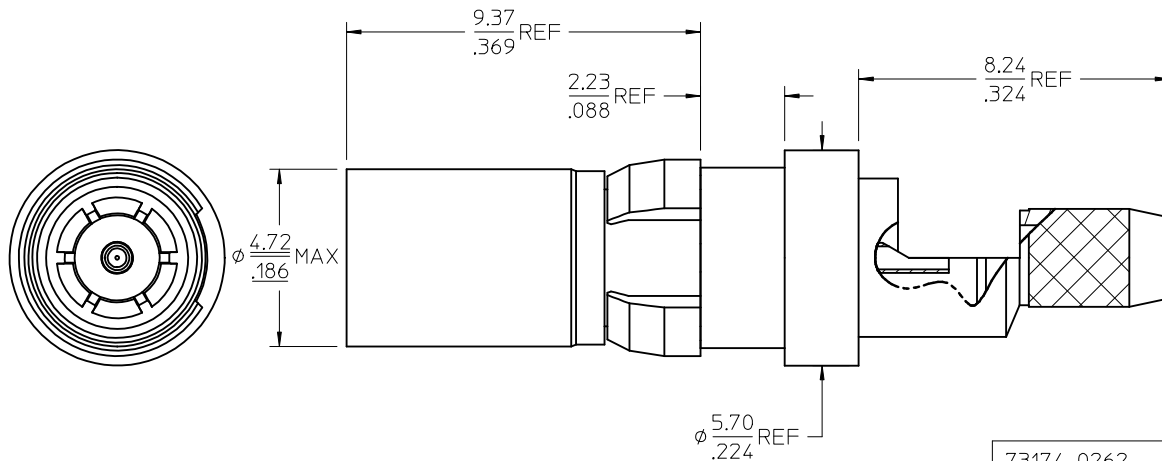
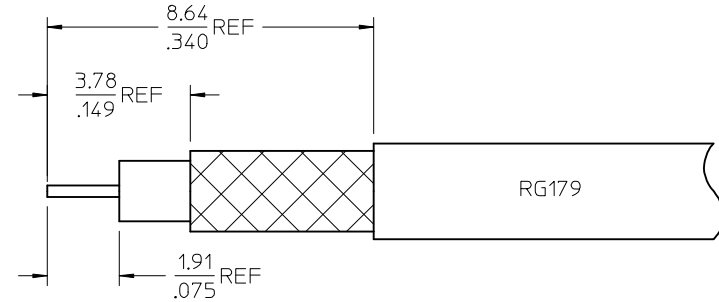
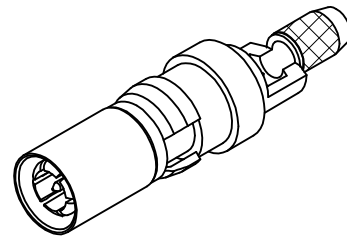
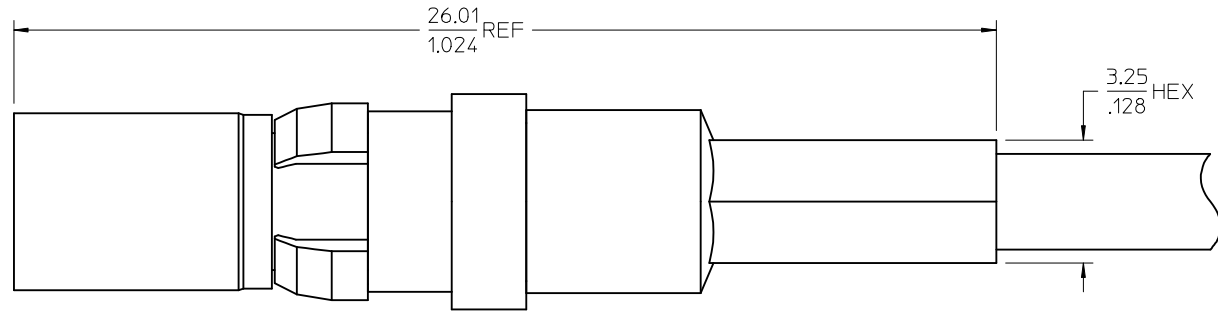
BODY, CRIMP TUBE, REAR BODY: BRASS  
PLATED SEE TABLE

OUTER CONTACT: BERYLLIUM COPPER  
PLATED GOLD

CONTACT: BRASS  
PLATED GOLD

INSULATOR: TEFLON

RETAINING CLIP: BERYLLIUM COPPER  
PLATED NICKEL



PS-89675-345	PRODUCT SPECIFICATION
DIN 41626	INTERFACE
SPECIFICATION	DESCRIPTION

73174-0262	GOLD	ONE PIECE 73174-0260 PER BAG
73174-0261	NICKEL	TRAY
73174-0260	GOLD	TRAY
ASSY NO.	FINISH	PACKAGING

CHG: ADDED  
PS-89675-345  
EWR RF15-E006  
EC NO: URF2015-0014  
DRAWN: CHENG 2014/07/14  
CHKD:  
APPR: YCHENG 2014/07/14  
REV B4

QUALITY SYMBOLS ▽=0 ▽=0	GENERAL TOLERANCES (UNLESS SPECIFIED)	DIMENSION STYLE MM/IN	SCALE	DESIGN UNITS METRIC	THIRD ANGLE PROJECTION
	4 PLACES ± --- ± --- 3 PLACES ± --- ± --- 2 PLACES ± --- ± --- 1 PLACE ± --- ± ---	mm INCH	DRAWN BY GMH	DATE 2003/09/05	TITLE DIN 41626 PLUG STR RG179 75 OHM / 75 OHM EWR2210 1.0/2.3-PC
ANGULAR ± 2 °		APPROVED BY GMH		DATE 2003/09/05	MATERIAL NO. SEE TABLE
DRAFT WHERE APPLICABLE MUST REMAIN WITHIN DIMENSIONS		DOCUMENT NO. SD-73174-026		SHEET NO. 1 OF 1	THIS DRAWING CONTAINS INFORMATION THAT IS PROPRIETARY TO MOLEX INCORPORATED AND SHOULD NOT BE USED WITHOUT WRITTEN PERMISSION