

SMT & THM POLARIZED "CR2" • "CR123A" CELL HOLDERS

FEATURES

- Battery installation and removal does not require tools.
- UL 94V-0 Heat resistant Nylon Housings well suited for reflow or wave soldering.
- Securely holds battery in place
- Polarized holder offers circuit protection against improper battery installation

APPLICATIONS

- Computer memory, power backup systems
- Telecommunications/Security Systems
- PLC and industrial controls

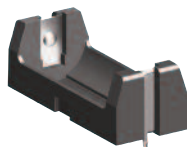
SPECIFICATIONS

Base: High Temp Nylon 46, UL Rated 94V-0
Contacts: .012 (.30) Stainless Steel, Gold Plate (Flash) - SMT

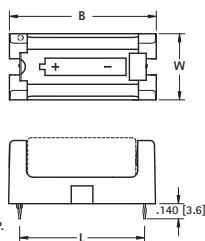
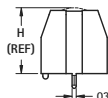
Contacts: .012 (.30) Stainless Steel, Tin-Nickel Plate - THM
Operating temp range: -60°F to 290°F (-50°C to 145°C)

THM

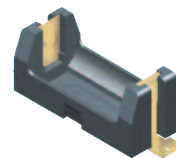
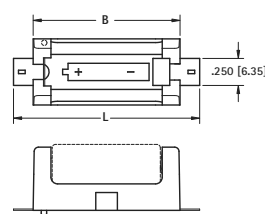
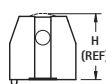
SMT



Thru-Hole Mount (THM)

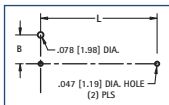


1018C
RETAINER
COVER
FITS ALL
HOLDERS



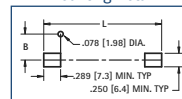
Surface Mount (SMT)

Mounting Detail



CAT. NO.	MOUNTING STYLE	L	W	H (Ref)	B	G	CELL SIZE	PACKAGING SPEC'S
1010	SMT	1.723 (43.8)	.612 (15.5)	.661 (16.8)	1.360 (34.5)	.265 (6.7)	CR2	50 pieces per tray
1011	THM	1.156 (29.4)						
1050	SMT	2.062 (52.4)						
1051	THM	1.487 (37.8)	.720 (18.3)	.712 (18.1)	1.690 (42.9)	.319 (8.1)	CR123A	

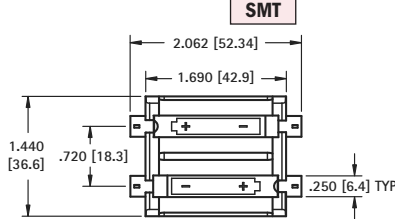
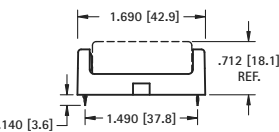
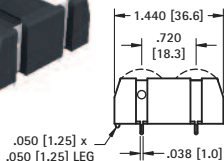
Mounting Detail



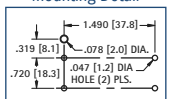
SMT & THM DUAL POLARIZED CR123A CELL HOLDER

THM

SMT



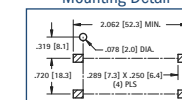
Mounting Detail



CAT. NO. 1079

Packaging Spec's: 25 pieces per tray

Mounting Detail



CAT. NO. 1080

SMT & INLINE "26650" LITHIUM-ION HOLDERS

SINGLE

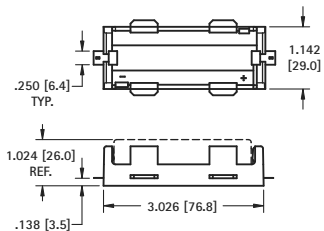
DUAL



1106
SMT



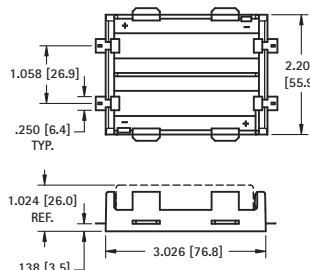
1107
Solder Lugs



DWG. 1 SMT version shown



- Thru board design saves on total product height.



DWG. 2 SMT version shown

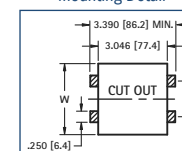


1108
SMT



1109
Solder Lugs

Mounting Detail



SPECIFICATIONS

SMT Base: High Temperature Nylon 4/6, UL Rated 94V-0
SMT Contacts: .012 (.03) Stainless Steel, Gold Plate (Flash)
Inline Base: PBT, UL Rated 94V-0
Inline Solder Lugs: .012 (.3) Stainless Steel, Nickel Plate

CAT. NO.	MTG.	FIG. NO.	HOLDS NO. OF CELLS	SMT MOUNTING PAD LAYOUT	
				W	C
1107	Solder Lugs	1	1	-	-
1109		2	2	-	-
1106	SMT	1	1	1.142 (29.0)	On Center
1108		2	2	2.200 (55.9)	1.058 (26.9)