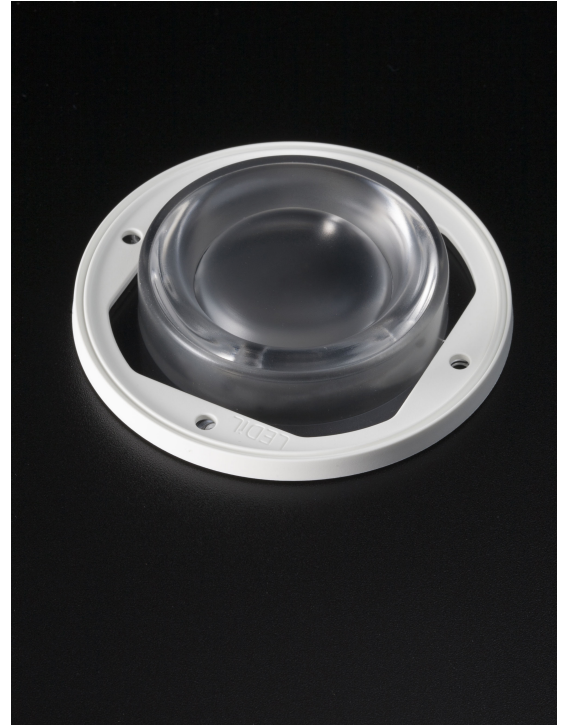


STELLA-HB

~75° high bay beam for warehouse and outdoor lighting. White version. Compatible with up to 23 mm LES size COBs.

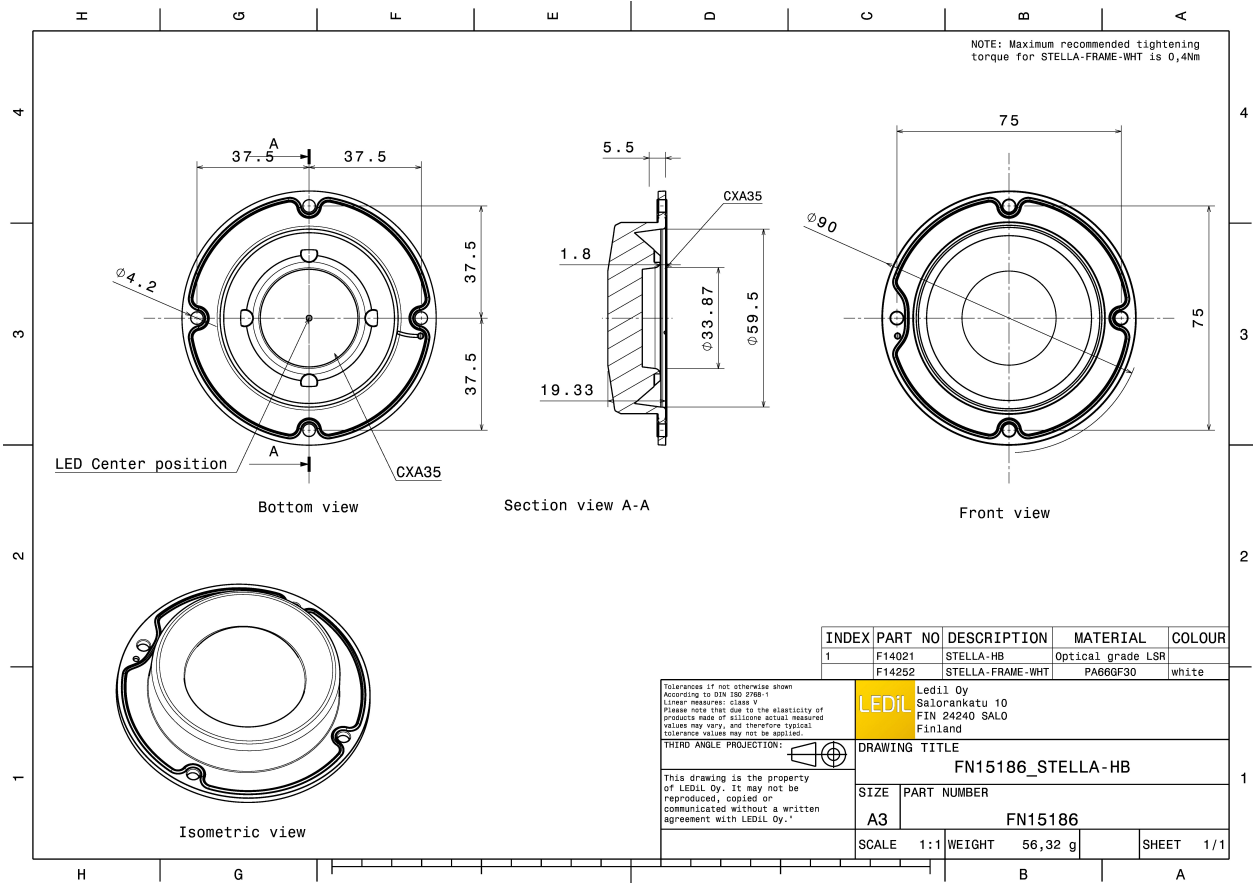
TECHNICAL SPECIFICATIONS:

Dimensions	Ø 90 mm
Height	19.5 mm
Fastening	screw
Colour	white
Box size	480 x 280 x 300 mm
Box weight	7.9 kg
Quantity in Box	135 pcs
ROHS compliant	yes ⓘ



MATERIAL SPECIFICATIONS:

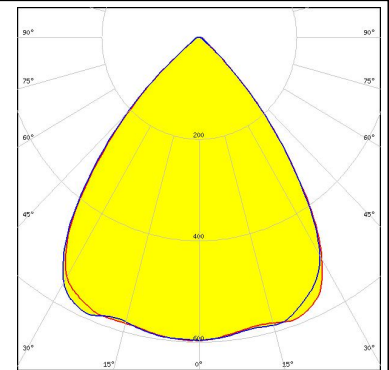
Component	Type	Material	Colour
STELLA-HB	Lens	Silicone	clear
STELLA-FRAME-WHT	Holder	PA66	white



PHOTOMETRIC DATA (MEASURED):

bridgelux.

LED V18 Gen7
FWHM 79.0°
Efficiency 93 %
Peak intensity 0.600 cd/lm
Required components:



bridgelux.

LED VERO18
FWHM 75.0°
Efficiency 93 %
Peak intensity 0.700 cd/lm
Required components:

bridgelux.

LED VERO29
FWHM 69.0°
Efficiency 94 %
Peak intensity 0.708 cd/lm
Required components:

CITIZEN

LED CLL04x/CLU04x
FWHM 68.0°
Efficiency 93 %
Peak intensity 0.770 cd/lm
Required components:
Bender Wirth: 431 Typ L4

PHOTOMETRIC DATA (MEASURED):

CITIZEN

LED CLL04x/CLU04x

FWHM 77.0°

Efficiency 94 %

Peak intensity 0.650 cd/lm

Required components:

CITIZEN

LED CLL05x/CLU05x

FWHM 73.0°

Efficiency 93 %

Peak intensity 0.630 cd/lm

Required components:

CITIZEN

LED CLL05x/CLU05x

FWHM 65.0°

Efficiency 94 %

Peak intensity 0.740 cd/lm

Required components:

CITIZEN

LED CLL163

FWHM 79.0°

Efficiency 94 %

Peak intensity 0.640 cd/lm

Required components:

PHOTOMETRIC DATA (MEASURED):

CREE ⇄

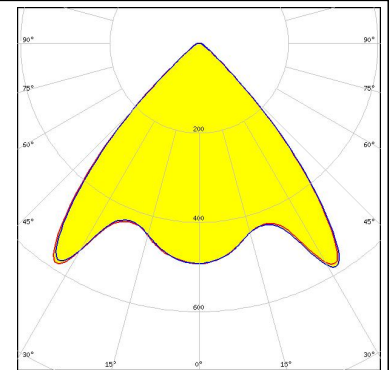
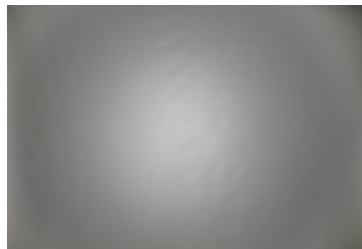
LED CXA/B 1816 & CXA/B 1820 & CXA 1850

FWHM 87.0°

Efficiency 93 %

Peak intensity 0.600 cd/lm

Required components:



CREE ⇄

LED CXA/B 25xx

FWHM 83.0°

Efficiency 93 %

Peak intensity 0.566 cd/lm

Required components:

CREE ⇄

LED CXA/B 30xx

FWHM 78.0°

Efficiency 93 %

Peak intensity 0.630 cd/lm

Required components:

CREE ⇄

LED CXA/B 3590

FWHM 72.0°

Efficiency 93 %

Peak intensity 0.682 cd/lm

Required components:

PHOTOMETRIC DATA (MEASURED):

LITEON

LED LTPL-M074
FWHM 76.0°
Efficiency 93 %
Peak intensity 0.650 cd/lm
Required components:

LUMILEDS

LED LUXEON CoB 1211
FWHM 71.0°
Efficiency 93 %
Peak intensity 0.730 cd/lm
Required components:

LUMILEDS

LED LUXEON CoB 1216/1812
FWHM 72.0°
Efficiency 94 %
Peak intensity 0.720 cd/lm
Required components:

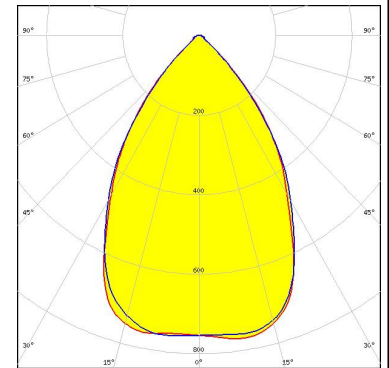
LUMINUS

LED CXM-18
FWHM 80.0°
Efficiency 93 %
Peak intensity 0.600 cd/lm
Required components:

PHOTOMETRIC DATA (MEASURED):



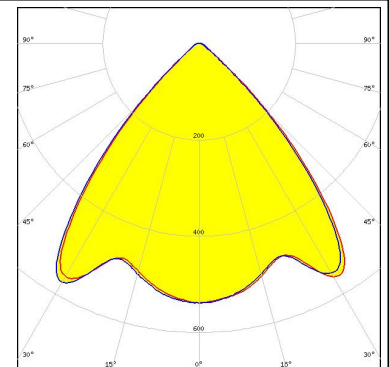
LED CXM-22
FWHM 68.0°
Efficiency 94 %
Peak intensity 0.770 cd/lm
Required components:
Bender Wirth: 431 Typ L3



LED CXM-22
FWHM 73.0°
Efficiency 93 %
Peak intensity 0.700 cd/lm
Required components:



LED COB J-Type
FWHM 85.0°
Efficiency 94 %
Peak intensity 0.570 cd/lm
Required components:

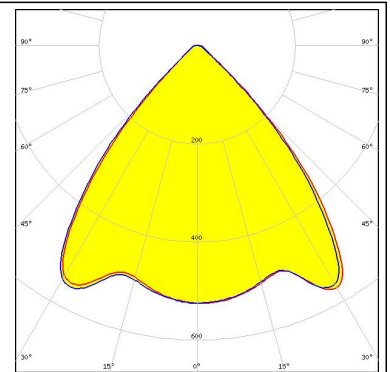
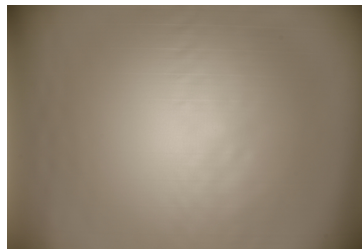


LED Soleriq S19
FWHM 84.0°
Efficiency 92 %
Peak intensity 0.570 cd/lm
Required components:

PHOTOMETRIC DATA (MEASURED):

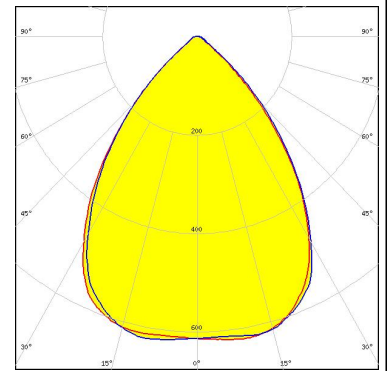
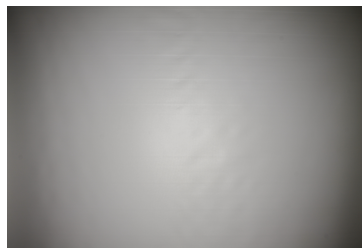
SAMSUNG

LED COB D Series LES 14.5 mm
 FWHM 84.0°
 Efficiency 93 %
 Peak intensity 0.570 cd/lm
 Required components:



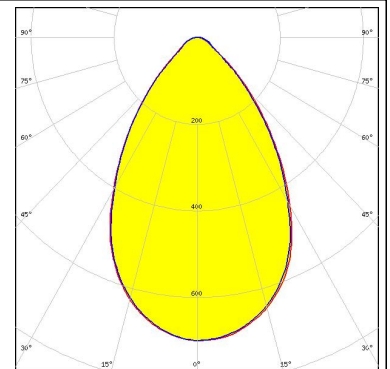
SAMSUNG

LED COB D Series LES 22 mm
 FWHM 77.0°
 Efficiency 94 %
 Peak intensity 0.630 cd/lm
 Required components:



SEOUL SEMICONDUCTOR

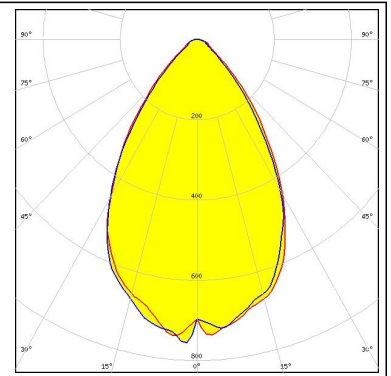
LED MJT COB LES 33
 FWHM 68.0°
 Efficiency 94 %
 Peak intensity 0.700 cd/lm
 Required components:
 Bender Wirth: 458 Typ L4



PHOTOMETRIC DATA (SIMULATED):

CITIZEN

LED CLL05x/CLU05x
FWHM 66.0°
Efficiency 92 %
Peak intensity 0.760 cd/lm
Required components:



GENERAL INFORMATION:

NOTE: The typical beam angle will be changed by different color, chip size and chip position tolerance. The typical total beam angle is the full angle measured where the luminous intensity is half of the peak value.

Due to use of high power COB's with this product, special attention to proper thermal design is highly recommended. LEDiL has no liability for direct, indirect or consecutive damages arising from the LEDiL products being used outside of the recommended temperature range.

MATERIALS:

As part of our continuous research and improvement processes, and to ensure the best possible quality and availability of our products, LEDiL reserves the right to change material grades without notice.

PRODUCT DATA USER AGREEMENT AND DISCLAIMER:

The measured data in the provided downloadable LEDiL Product Datasheets and Mechanical 2D-Drawings is rounded and provided as reference for planning. LEDiL Oy's optical specifications have been verified by conducting performance testing of the products in accordance with the company's quality system. The reported data are averaged results of multiple measurements with typical variation. LEDiL Oy reserves the right to without prior notification make changes and improvements to its products.

LEDiL Oy assumes neither warranty, nor guarantee nor any other liability of any kind for the contents and correctness of the provided data. The provided data has been generated with highest diligence but the provided data may in reality not represent the complete possible variation range of all intrinsic parameters. Therefore, in certain cases a deviation from the provided data could occur.

LEDiL Oy reserves the right to undertake technical changes of its products without further notification which could lead to changes in the provided data. LEDiL Oy assumes no liability of any kind for the possible deviation from any provided data or any other damage resulting from the usage of the provided data.

The user agrees to this disclaimer and user agreement with the download or usage of the provided files.

LEDiL Oy

Joensuunkatu 13
FI-24240 SALO
Finland

LEDiL Inc.

228 West Page Street
Suite D
Sycamore IL 60178
USA

Local sales and technical support

[www.ledil.com/
where_to_buy](http://www.ledil.com/where_to_buy)

Shipping locations

Salo, Finland
Hong Kong, China

Distribution Partners

[www.ledil.com/
where_to_buy](http://www.ledil.com/where_to_buy)