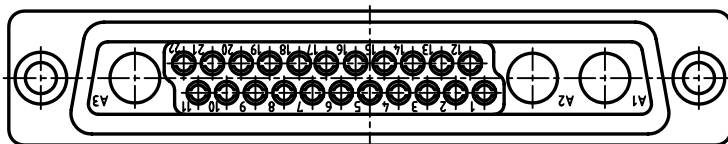
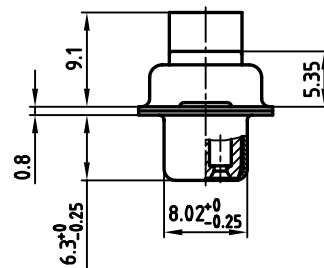
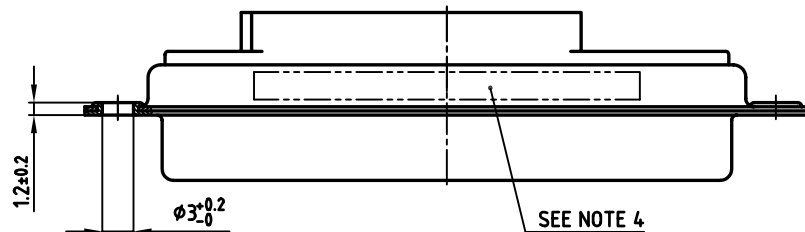
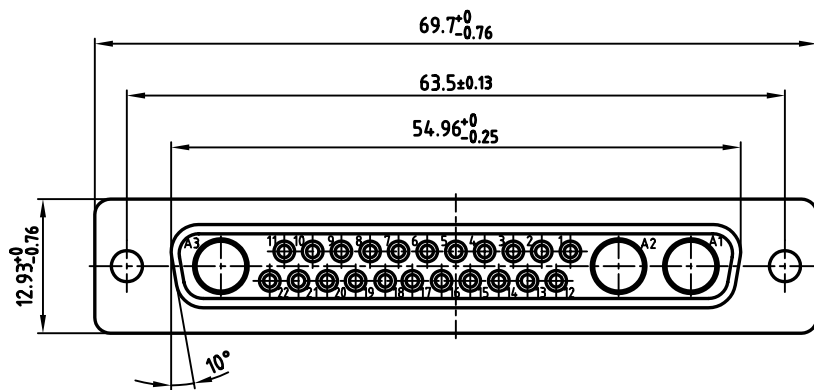


used for: D-SUB COMBINATION CRIMP



**NOTES:**

1. METALSHELLS: STEEL: min. 320µin TIN over 80µin NICKEL
2. INSULATORS: PBTP GF UL 94 V-0; BLACK
3. CONNECTOR IS PART MARKED: PART NO. CONEC ABC

Directive 2002/95/EC  
 „RoHS“  
 Compliant

THIS DRAWING MAY NOT BE COPIED OR REPRODUCED IN ANY WAY, AND MAY NOT BE PASSED ON TO A THIRD PARTY, WITHOUT WRITTEN PERMISSION. OWNERSHIP AND COPYRIGHT OF CONEC GmbH DO NOT ALTER CAD DRAWING BY HAND

rev.	description	date	name

tolerance		
2002	date	
drawn	08.08.	name
appd.	08.08.	Mickenbecker
norm	DIN 41652	
d-old		

scale:	2:1	
material:	SEE NOTES	
title:	<b>D-SUB COMBINATION FEMALE</b> 25W3S CRIMP STYLE	
dwg no:	AutoCAD 2000	DIN-A
	13K1A670	3
		sh: 1/1
part no:	3025W3SXX99A10X	