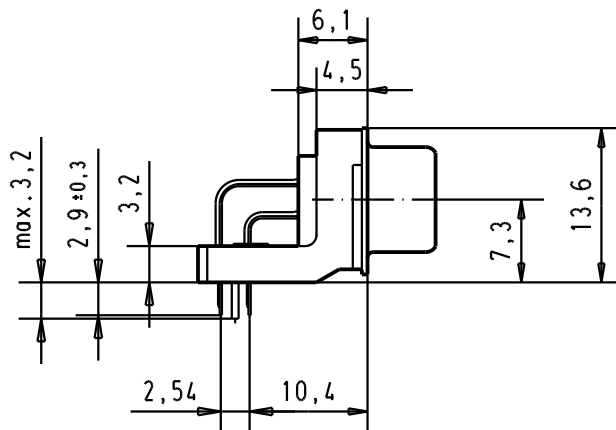
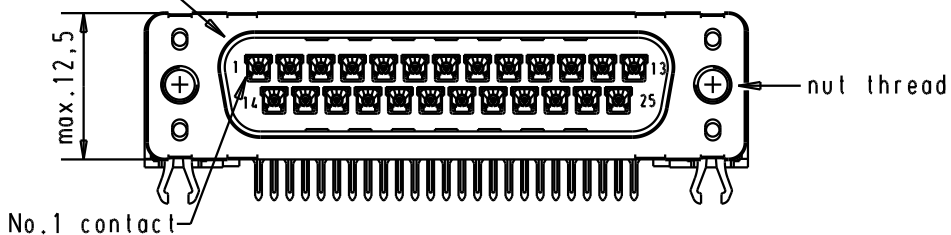
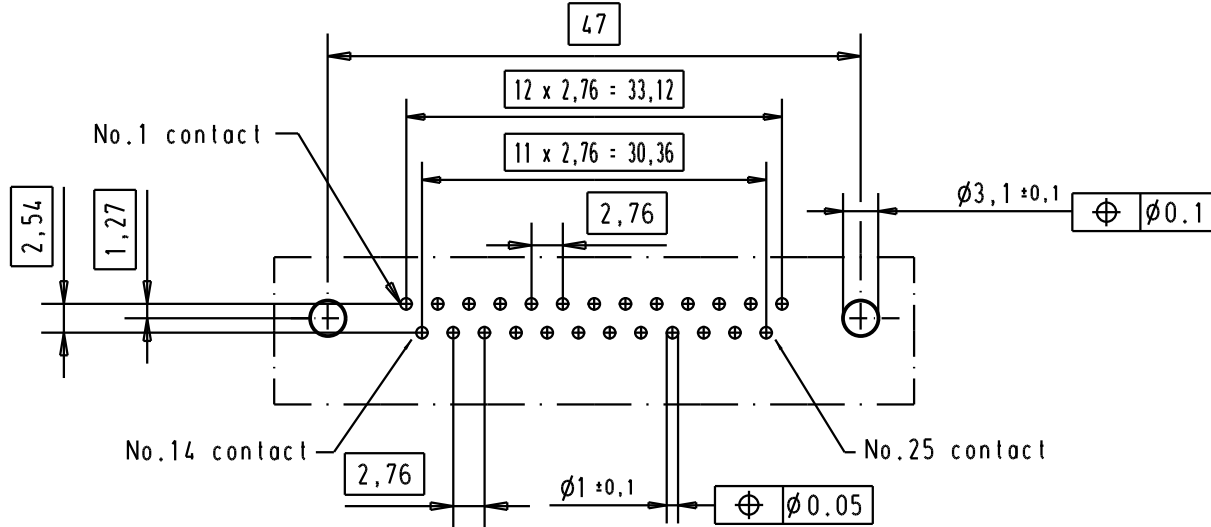
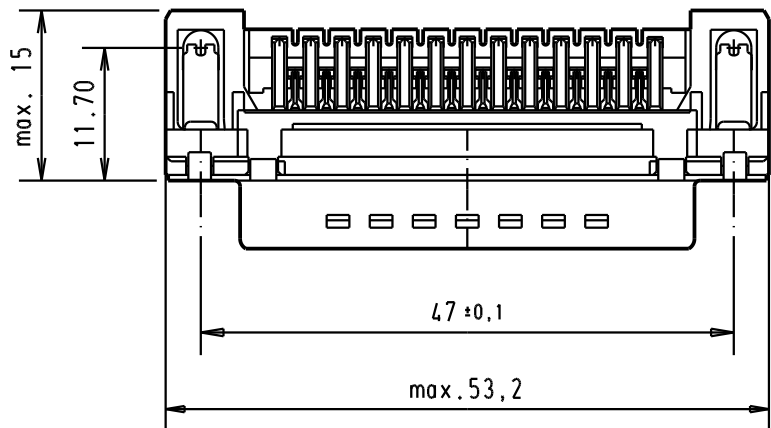


5 4 3 2 1

Mating face according to : MIL-C-24308 / DIN 41652 / CECC 75301-802



PCB layout hole component side



Connector retention and insertion forces on the PCB = 25 / 80 newtons

A	09 65 366 3811	M3	1					Dat.	Name	 All Dim. in mm Orig. Size DIN A 4	D-Sub, High temperature, male, standard, 25 poles with solder pins 2,9mm, nuts and grounding board lock.	Maßstab/Scale 1.5:1
	09 65 366 6811	M3	2				Detail.	15-FEB-02	JB			
	09 65 366 7811	M3	3				Insp.					
	09 65 366 3812	4-40 UNC	1	31892	22/04/04	JH	Stand.					
	09 65 366 6812	4-40 UNC	2	29723	05-MAR-02	CV						
09 65 366 7812	4-40 UNC	3	29750	15-FEB-02	JB							
Part number			Nut thread	Performance level	Mod.	Dat.	Name	HARTING EURL F-95972 Paris			TB 0965366x81x	Blatt/ Page 1
Sub.												