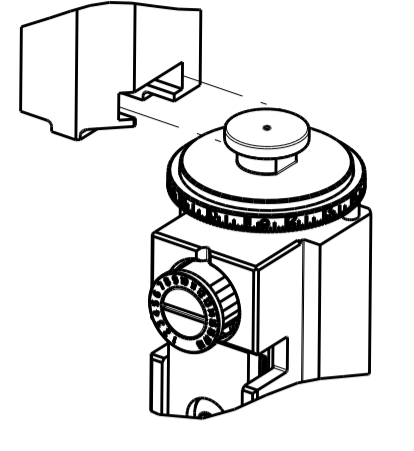


ATLANTIC VERSION TERMINATOR INTERFACE ADAPTER	PART NUMBER	REVISION	DESCRIPTION	FEED TYPE	APPLICATOR STYLE CONVERSION CHART							
					CONVERT TO	PART NUMBERS REQUIRED						
						PNEUMATIC FEED	2119950-1	1338685-1	5-18022-5	2119641-1	2119799-1	2063440-1
	2151035-1	B	FINE CRIMP HEIGHT ADJUST	MECHANICAL	SERVO LATCH PLATE	2119951-1	-	8-2151035-5	1901094-3	-	2168400-6 (QUANTITY 2)	
					SMART APPLICATOR	2161326-1	-	8-2151035-4	-	-	-	
	2151035-2	B	FINE CRIMP HEIGHT ADJUST	PNEUMATIC	MECHANICAL FEED	2119949-1	1338685-1	5-18022-5	2119653-1	-	-	
					SERVO LATCH PLATE	2119951-1	-	8-2151035-5	1901094-3	-	2168400-6 (QUANTITY 2)	
	2151035-5	B	FINE CRIMP HEIGHT ADJUST	SERVO LATCH PLATE	SERVO LATCH PLATE	MECHANICAL FEED	2119949-1	1338685-1	5-18022-5	2119653-1	-	-
						PNEUMATIC FEED	2119950-1	1338685-1	5-18022-5	2119641-1	2119799-1	2063440-1
2151035-6	B	NON-CRIMP HEIGHT ADJUST	SERVO LATCH PLATE	SERVO LATCH PLATE	-	-	-	-	-	-	-	
					-	-	-	-	-	-	-	
2151035-7	B	FINE CRIMP HEIGHT ADJUST	NONE	-	-	-	-	-	-	-	-	
7-2151035-7	A	CRIMP TOOLING KIT	-	-	-	-	-	-	-	-	-	

CRIMP	SIZE	TYPE
WIRE	1.40 mm [.055]	F
INSUL	3.18 mm [.125]	O

APPLICATOR INSTRUCTIONS 408-10389

TERMINAL NAME	TE CRIMP SPECIFICATION
SOCKET CONTACT 0.63X1.5mm SWS	
WIRE STRIP LENGTH 3.30-3.90 mm [.130-.154 IN]	INSULATION DIAMETER RANGE 1.10-1.60 mm [.043-.063 IN]
TERMINAL APPLICATION SPECIFICATION 114-18286	

TE TERMINAL	TE SEAL	TE SEAL
1241603-1	967067-1	963142-1
	967067-2	963142-2

WIRE SIZE	CRIMP HEIGHT mm [INCH]	CRIMP HEIGHT REFERENCE SETTING
0.50mm ²	1.01 +/- 0.05 [.040 +/- .002]	6.6
0.35mm ²	0.92 +/- 0.05 [.036 +/- .002]	7.4

- RECOMMENDED SPARE PARTS
- GREASE BEARING SURFACES LIGHTLY
3. LUBRICATE DAILY PER THE APPLICATOR INSTRUCTION SHEET SUPPLIED WITH THE APPLICATOR.
4. APPLICATOR SPECIFIC DATA TO BE ENTERED INTO BLANK MEMORY CHIP AT ASSEMBLY. SEE BELOW FOR PART NUMBER:
 MECHANICAL FEED WITH "SMART APPLICATOR" CONVERSION: 8-2151035-5
 PNEUMATIC FEED WITH "SMART APPLICATOR" CONVERSION: 8-2151035-4
 SERVO FEED WITH "FINE CRIMP HEIGHT ADJUST": 8-2151035-5
 SERVO FEED WITH "NON-CRIMP HEIGHT ADJUST": 8-2151035-6
5. ADJUSTMENT OF THE STRIPPER MAY BE REQUIRED WHEN MOVING THE APPLICATOR BETWEEN BENCH AND LEADMAKER APPLICATIONS.
6. APPLY PART NUMBER 1-23419-5 LOCTITE TO THREADS OF ITEMS 62
 APPLY PART NUMBER 2-23419-6 LOCTITE TO THREADS OF ITEMS 242.
 FOR -6 ONLY APPLY PART NUMBER 1-23419-5 LOCTITE TO THREADS OF ITEM 37.
7. GREASE THREADS, GROOVE AND O-RING ON ITEMS 35 & 252.
8. MAGNET, ITEM 166 MUST BE ORIENTED CORRECTLY IN ORDER TO PROPERLY ACTUATE THE COUNTER.
9. CRIMP HEIGHT REFERENCE SETTING WAS THE SETTING USED WHEN THE APPLICATOR WAS QUALIFIED AT THE FACTORY. ADJUSTMENT MAY BE NECESSARY WHEN RUNNING APPLICATOR IN THE FIELD.
10. SPARE FEED CAM STORAGE LOCATION REFER TO INSTRUCTION SHEET FOR ADDITIONAL INFORMATION.
11. TO CONVERT THE APPLICATOR TO A NON-CARRIER CUTTING STYLE, REMOVE ITEM 13 AND ATTACH TO THE LOCATION ON THE BACK SIDE OF THE HOUSING. REFER TO INSTRUCTION SHEET FOR ADDITIONAL INFORMATION.
12. WHEN ASSEMBLING -6 NON-CRIMP HEIGHT ADJUST APPLICATOR USE SHIM PACK 2119957-2 TO ALIGN APPLICATOR'S MAXIMUM WIRE CRIMP HEIGHT AT NORMAL TERMINATOR SHUT HEIGHT
13. THIS APPLICATOR APPLIES TERMINAL WITH A SEAL.
 SEAL 963142-1 & 967067-1 IS FOR INSULATION RANGE 1.4-2.1
 SEAL 963142-2 & 967067-2 IS FOR INSULATION RANGE 0.9-1.4
14. APPLY TORQ-SEAL IN ALLEN SOCKET TO FILL HOLE AFTER FLAT HD HAS BEEN ADJUSTED TO CORRECT HEIGHT AT QUALIFICATION. APPLY #1-23419-5 LOC-TITE TO THREADS.
15. FOR 0.35mm² INSULATION RANGE IS 1.1-1.4mm
 FOR 0.50mm² INSULATION RANGE IS 1.4-1.6mm
16. CUT TO LENGTH AT ASSY

***WARNING**
 ON INSTALLATION, SET WIRE DISC, ITEM 40 TO LARGEST WIRE SIZE SETTING. USE OF SETTINGS BELOW MINIMUM REQUIRED CRIMP HEIGHT SETTING WILL CAUSE DAMAGE TO CRIMP TOOLING.

ATLANTIC VERSION
 Shown on sheets 1 of 4 & 2 of 4
 (Pacific version shown on sheets 3 of 4 & 4 of 4)

LOC	DIST	REVISIONS			
A	66	REV	DATE	BY	APP'D
SET UP GAUGE	2119599-1	A	28FEB2012	YY	SX
		B	14MAY2013	YY	UG
		B1	12OCT2015	KH	CT

REV	DATE	DESCRIPTION	DATE	BY	APP'D
-	-	1 - - -	2119957-2		260
-	-	1 - 1 1	8-21084-0		252
-	-	- - - 1	2119640-1		250
-	-	- - - 1	2079988-1		249
-	-	- - - 1	2119641-1		248
-	-	- 1 - 1	2119798-1		247
-	-	- 1 - 1	1-22279-3		246
-	-	- 1 - -	2119758-1		245
-	-	1 1 1 1	2119082-9		244
-	-	1 1 1 1	2079764-1		243
-	-	1 1 1 1	2119083-1		242
-	-	1 1 1 1	18023-1		241
-	-	- 2 2 - -	2168400-6		240
-	-	- - - - 1	2119580-1		239
-	-	- - - - 1	2063440-1		238
-	-	- 1 1 - -	2119740-2		213
-	-	- 1 1 - -	1901094-3		198
-	-	- - - - 2	21045-3		172
-	-	1 1 1 1	994969-1		166
-	REF	REF REF REF REF	994970-2		164
-	-	- - - 1 -	240638-1		163
-	-	- - - - 1	3-23627-7		137
-	-	- - - - 1	2119799-1		136
-	-	REF REF - -	SEE NOTE 4		135
-	-	1 1 - -	1633743-1		133
-	-	1 1 1 1	1-18028-2		119
-	-	REF REF - -	2119944-1		117
-	-	1 1 1 1	455888-5		82
-	-	1 1 1 1	2119956-1		71
-	-	- - - 1 1	2119740-1		67
-	-	2 2 2 2	2168078-1		66
-	-	- 1 - 1	2119793-1		63
-	-	3 - - 3 3	992763-5		62
-	-	1 1 1 1	2079383-4		60
-	-	- - - 1 1	5-18022-5		59
-	-	1 1 1 1	985575-3		57
-	-	- - - 1 1	1338685-1		56
-	-	4 4 4 4	2168400-1		54
-	-	2 2 2 2	1-21680083-0		52
-	-	- - - 1 2	18023-9		49
-	-	- - - - 1	2119652-1		48
-	-	- - - - 1	2119653-1		47
-	-	1 1 1 1	2119656-9		46
-	-	- 1 - 1	2119370-1		44
-	-	1 1 1 1	2079383-7		41
-	-	- 1 - 1	2119645-1		40
-	-	- 1 - 1	2119957-1		39
-	-	1 1 1 1	2119644-1		38
-	-	1 1 1 1	2119085-1		37
-	-	1 - - 1 1	2119092-1		35
-	-	1 1 1 1	1752356-3		34
-	-	2 2 2 2	2079383-5		33
-	-	1 1 1 1	2161328-1		32
-	-	1 1 1 1	1-1320908-0		30
-	-	1 1 1 1	2119959-1		29
-	-	1 1 1 1	455888-4		28
-	-	1 1 1 1	1320928-2		24
-	-	1 1 1 1	2168083-2		21
-	-	1 1 1 1	1-18028-2		20
-	-	1 1 1 1	2119533-1		19
-	-	1 1 1 1	879657-2		18
-	-	1 1 1 1	2119806-1		13
-	-	1 1 1 1	3-22280-3		12
-	-	1 1 1 1	1-356885-4		11
-	-	1 1 1 1	2119805-1		10
-	-	1 1 1 1	318707-1		9
-	-	1 1 1 1	5-1333201-1		8
-	-	1 1 1 1	2-240641-4		7
-	-	1 1 1 1	2-2119781-4		5
-	-	1 1 1 1	238011-2		4
-	-	1 1 1 1	1633966-7		3
-	-	1 1 1 1	455888-6		2
-	-	1 1 1 1	456402-1		1

ITEM NO	PART NO	DESCRIPTION	ITEM NO
-77	-7	-6 -5 -2 -1	PART NO
			DESCRIPTION
			ITEM NO

TE Connectivity Harrisburg, PA 17105-3608	Product Spec Ocean Side Feed Applicator	Customer Accessible Production Drawing	SCALE 1:2 SHEET 1 of 4 REV B1
----------------------------------------------	-----------------------------------------------	----------------------------------------	-------------------------------

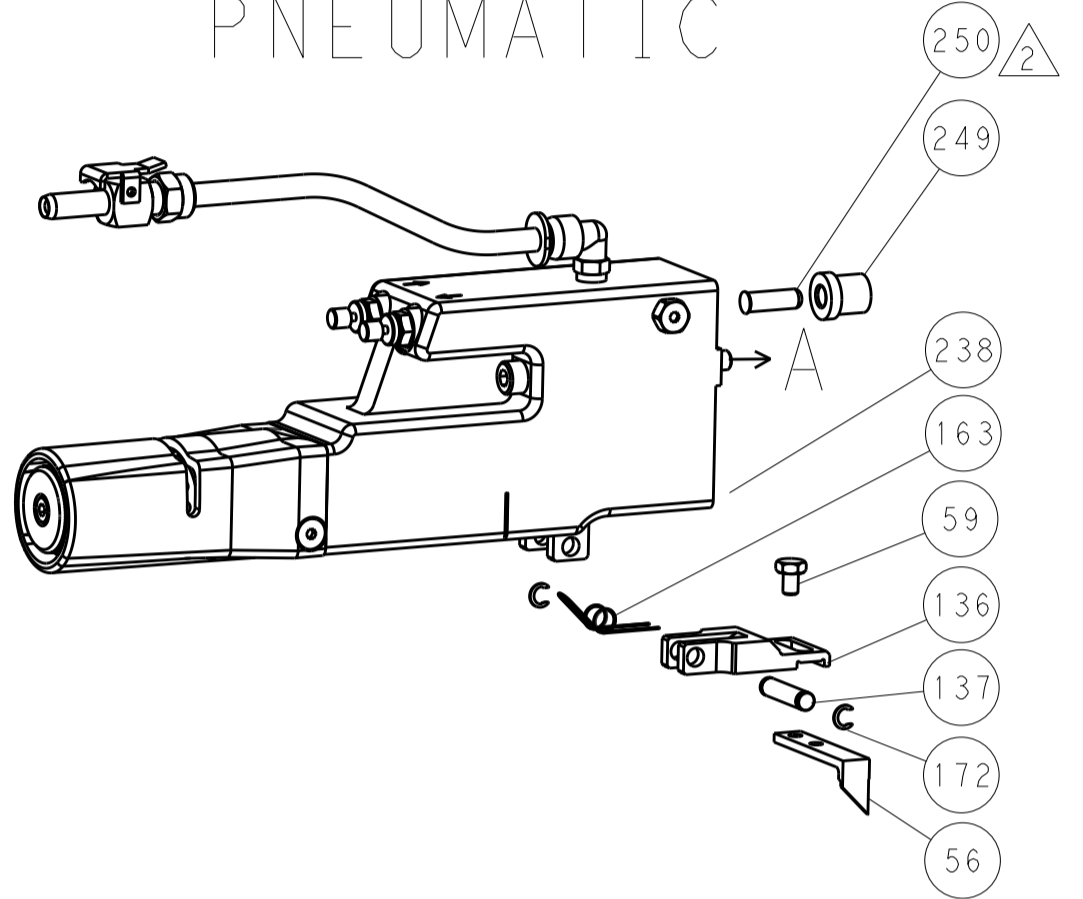
SHEETS 3 & 4 ARE NOT REQUIRED FOR ATLANTIC VERSION

LOC	DIST	REV	DATE	BY	APPV
A	66				

FEED TYPE MECHANICAL



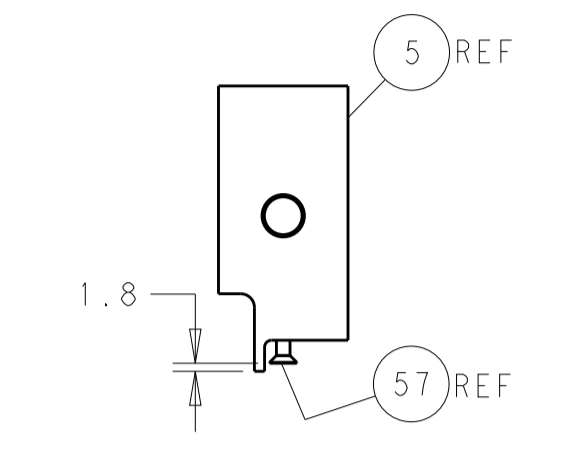
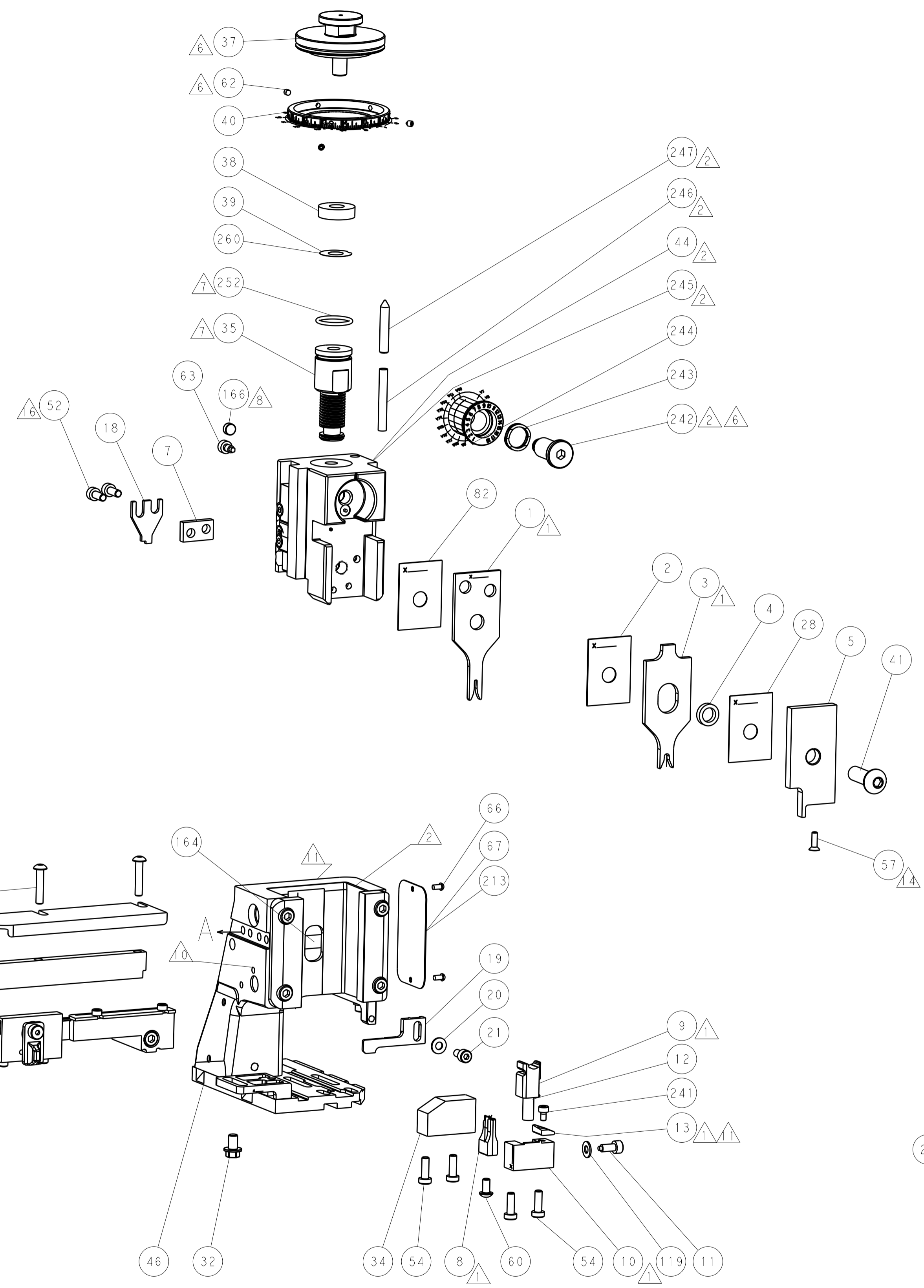
PNEUMATIC



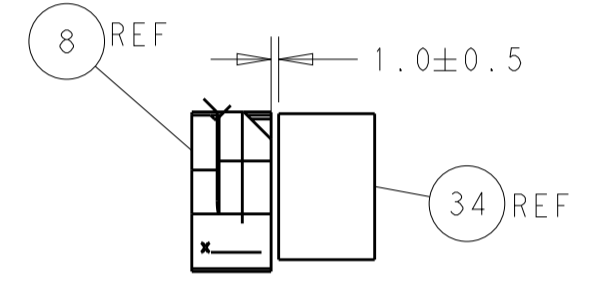
SERVO LATCH PLATE



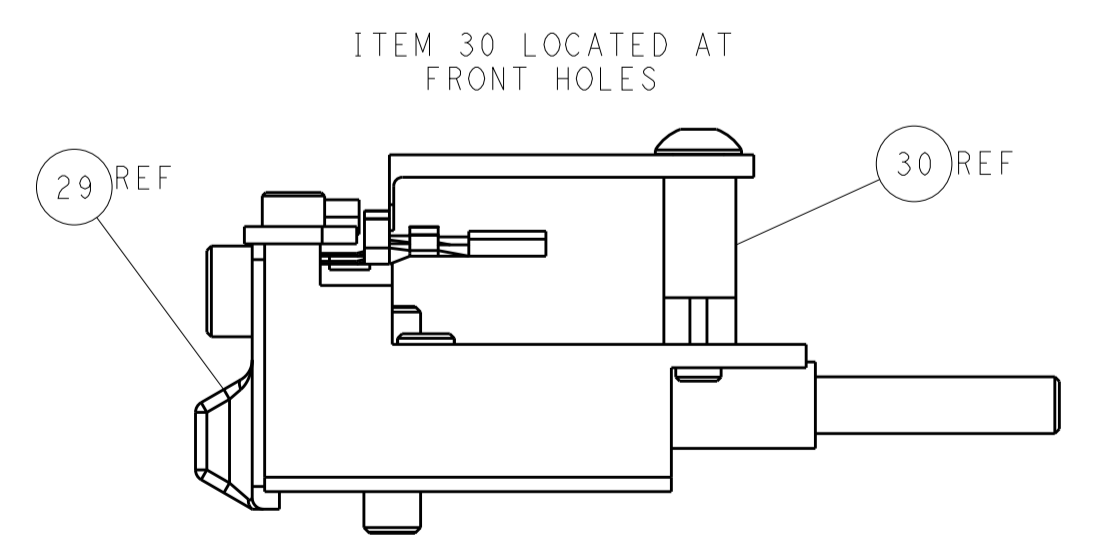
CAM POSITIONS



SHEAR DEPRESSOR DETAIL



TERMINAL SUPPORT LOCATION



FEED TRACK POSITION GUIDE BY INSULATION BARREL

ATLANTIC VERSION
 Shown on sheets 1 of 4 & 2 of 4
 (Pacific version shown on sheets 3 of 4 & 4 of 4)

DIMENSIONS: mm 		TOLERANCES UNLESS OTHERWISE SPECIFIED: 0 PLC ±.5 1 PLC ±0.5 3 PLC ±0.13 4 PLC ±0.013 ANGLES ±.0001		DWN Y. YIN 20SEP2011 CHK G. BAILEY 20SEP2011 APVD S. XI 20SEP2011		NAME Ocean Side Feed Applicator SIZE CAGE CODE DRAWING NO. A11 00779 ©=2151035 RESTRICTED TO	
MATERIAL		FINISH		WEIGHT		SCALE 1:2 SHEET 2 OF 4 REV B1	

PACIFIC VERSION TERMINATOR INTERFACE ADAPTER	PART NUMBER	REVISION	DESCRIPTION	FEED TYPE	CONVERT TO	PART NUMBERS REQUIRED					
	2-2151035-1	B	FINE CRIMP HEIGHT ADJUST	MECHANICAL	PNEUMATIC FEED	2119950-1	1338685-1	5-18022-5	2119641-2	2119799-1	2063440-1
					SERVO LATCH PLATE	2119951-1	-	8-2151035-5	1901094-3	-	2168400-6 (QUANTITY 2)
	2-2151035-2	B	FINE CRIMP HEIGHT ADJUST	PNEUMATIC	MECHANICAL FEED	2119949-1	1338685-1	5-18022-5	2119653-2	-	-
					SERVO LATCH PLATE	2119951-1	-	8-2151035-5	1901094-3	-	2168400-6 (QUANTITY 2)
	2-2151035-5	B	FINE CRIMP HEIGHT ADJUST	SERVO LATCH PLATE	MECHANICAL FEED	2119949-1	1338685-1	5-18022-5	2119653-2	-	-
	2-2151035-7	B	FINE CRIMP HEIGHT ADJUST	NONE	PNEUMATIC FEED	2119950-1	1338685-1	5-18022-5	2119641-2	2119799-1	2063440-1
	7-2151035-7	A	CRIMP TOOLING KIT	-	-	-	-	-	-	-	-

APPLICATOR DATA

CRIMP	SIZE	TYPE
WIRE	1.40 mm [.055]	F
INSUL	3.18 mm [.125]	O

APPLICATOR INSTRUCTIONS
408-10389

TERMINAL DATA: TE TERMINAL TE CRIMP SPECIFICATION

TERMINAL NAME: SOCKET CONTACT 0.63X1.5mm SWS

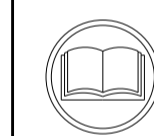
WIRE STRIP LENGTH	INSULATION DIAMETER RANGE
3.30-3.90 mm [.130-.154 IN]	Ø1.10-1.60 mm [.043-.063 IN]

TERMINAL APPLICATION SPECIFICATION 114-18286

TERMINALS APPLIED

TE TERMINAL	TE SEAL
1241603-1	967067-1 963142-1
	967067-2 963142-2

WIRE SIZE	CRIMP HEIGHT mm [INCH]	CRIMP HEIGHT REFERENCE SETTING
0.50mm ²	1.01+/-0.05 [.040+/- .002]	6.6
0.35mm ²	0.92+/-0.05 [.036+/- .002]	7.4



- RECOMMENDED SPARE PARTS
- GREASE BEARING SURFACES LIGHTLY
- 3. LUBRICATE DAILY PER THE APPLICATOR INSTRUCTION SHEET SUPPLIED WITH THE APPLICATOR.
- APPLICATOR SPECIFIC DATA TO BE ENTERED INTO BLANK MEMORY CHIP AT ASSEMBLY. SEE BELOW FOR PART NUMBER:
 MECHANICAL FEED WITH "SMART APPLICATOR" CONVERSION: 8-2151035-4
 PNEUMATIC FEED WITH "SMART APPLICATOR" CONVERSION: 8-2151035-4
 SERVO FEED WITH "FINE CRIMP HEIGHT ADJUST": 8-2151035-5
- 5. ADJUSTMENT OF THE STRIPPER MAY BE REQUIRED WHEN MOVING THE APPLICATOR BETWEEN BENCH AND LEADMAKER APPLICATIONS.
- APPLY PART NUMBER 1-23419-5 LOCTITE TO THREADS OF ITEMS 62. APPLY PART NUMBER 2-23419-6 LOCTITE TO THREADS OF ITEMS 242.
- GREASE THREADS, GROOVE AND O-RING ON ITEMS 139 & 152.
- MAGNET MUST BE ORIENTED CORRECTLY IN ORDER TO PROPERLY ACTUATE THE COUNTER.
- CRIMP HEIGHT REFERENCE SETTING WAS THE SETTING USED WHEN THE APPLICATOR WAS QUALIFIED AT THE FACTORY. ADJUSTMENT MAY BE NECESSARY WHEN RUNNING APPLICATOR IN THE FIELD.
- SPARE FEED CAM STORAGE LOCATION REFER TO INSTRUCTION SHEET FOR ADDITIONAL INFORMATION.
- TO CONVERT THE APPLICATOR TO A NON-CARRIER CUTTING STYLE, REMOVE ITEM 13 AND ATTACH TO THE LOCATION ON BACK SIDE OF THE HOUSING. REFER TO INSTRUCTION SHEET FOR ADDITIONAL INFORMATION.
- THIS APPLICATOR APPLIES TERMINAL WITH A SEAL.
SEAL 963142-1 & 967067-1 IS FOR INSULATION RANGE 1.4-2.1
SEAL 963142-2 & 967067-2 IS FOR INSULATION RANGE 0.9-1.4
- APPLY TORO-SEAL IN ALLEN SOCKET TO FILL HOLE AFTER FLAT HD HAS BEEN ADJUSTED TO CORRECT HEIGHT AT QUALIFICATION. APPLY #1-23419-5 LOC-TITE TO THREADS.
- FOR 0.35mm² INSULATION RANGE IS 1.1-1.4mm
FOR 0.50mm² INSULATION RANGE IS 1.4-1.6mm
- CUT TO LENGTH AT ASSY

***WARNING**
ON INSTALLATION, SET WIRE DISC, ITEM 40 TO LARGEST WIRE SIZE SETTING. USE OF SETTINGS BELOW MINIMUM REQUIRED CRIMP HEIGHT SETTING WILL CAUSE DAMAGE TO CRIMP TOOLING.

PACIFIC VERSION
Shown on sheets 3 of 4 & 4 of 4
(Atlantic version shown on sheets 1 of 4 & 2 of 4)

SET UP GAUGE 2119599-1	LOC A	DIST 66	REVISIONS			
			REV	DATE	BY	APPD
			-	SEE SHEET 1		

REV	DATE	BY	APPD	DESCRIPTION	QTY
-	1 1 1 1	-	-	2119782-1 FINE ADJUST HEAD ASM, PACIFIC STYLE	251
-	- - - 1 -	-	-	2119640-1 PUSH ROD, AIR FEED	250
-	- - - 1 -	-	-	2079988-1 BUSHING, LCH5-12, MISUMI	249
-	- 1 1 1 1	-	-	1-22279-3 SPRING, COMPRESSION	246
-	- 1 1 1 1	-	-	2119082-9 CAM, SNAIL, INSULATION ADJUSTMENT	244
-	- 1 1 1 1	-	-	2079764-1 WASHER, WAVE SPRING, CREST-TO-CREST	243
-	- 1 1 1 1	-	-	2119083-1 RETAINER, INSULATION DIAL	242
-	- 1 1 1 1	-	-	18023-1 SCR, SKT HD CAP M3 X 5.0	241
-	- - 2 - -	-	-	2168400-6 SHCS, LOW HEAD, RoHS, M5 X 16	240
-	- - - - 1	-	-	2119580-1 MECHANICAL FEED ASSEMBLY	239
-	- - - 1 -	-	-	2063440-1 AIR FEED MODULE	238
-	- - 1 - -	-	-	2119740-2 TAG IDENTIFICATION	213
-	- - 1 - -	-	-	1901094-3 SPACER, FEEDER	198
-	- - - 2 -	-	-	21045-3 RING, RETAIN, EXTERN, 3/16 CRESCENT	172
-	- 1 1 1 1	-	-	994969-1 MAGNET, RARE EARTH HIGH ENERGY	166
-	- REF REF REF REF	-	-	994970-2 COUNTER, MAGNETIC	164
-	- - - 1 -	-	-	240638-1 SPRING, FEED FINGER	163
-	- 1 1 1 1	-	-	8-21084-1 O-RING, .801 ID, .070 DIA. MAT.	152
-	- - - 1 -	-	-	2119641-2 FEED CAM, AIR FEED	151
-	- 1 1 1 1	-	-	2119798-2 DETENT PIN	145
-	- 1 1 1 1	-	-	2079383-8 SCR, BHSC, RoHS (M4 X 16)	144
-	- 4 4 4 4	-	-	2168400-5 SHCS, LOW HEAD, RoHS, M4 X 20	143
-	- - - - 1	-	-	2119653-2 FEED CAM, POST FEED	142
-	- 1 1 1 1	-	-	1-2119656-0 APPLICATOR BASIC ASSEMBLY, SF	141
-	- 1 1 1 1	-	-	2119650-1 RAM, ASIAN STYLE, SIDE FEED	140
-	- 1 1 1 1	-	-	2119092-2 BOLT, ADJUSTMENT	139
-	- - - 1 -	-	-	3-23627-7 PIN, RETAIN, GRVD, 3/16 X .854	137
-	- - - 1 -	-	-	2119799-1 HOLDER, FEED FINGER, AF	136
-	- - REF - -	-	-	SEE NOTE 4 MEMORY CHIP, PROGRAMMED	135
-	- - 1 - -	-	-	1633743-1 SERVO FEED LATCH ASM	133
-	- 1 1 1 1	-	-	1-18028-2 WASHER, FLAT, REG M4	119
-	- - REF - -	-	-	2119944-1 FEED FINGER ASSEMBLY, SF	117
-	- 1 1 1 1	-	-	455888-5 SPACER, CRIMPER	82
-	- 1 1 1 1	-	-	2119956-1 DOCUMENTATION PACKAGE	71
-	- 1 - 1 1	-	-	2119740-1 TAG IDENTIFICATION	67
-	- 2 2 2 2	-	-	2168078-1 SCREW, DRIVE, RH, RoHS, 2 x .188	66
-	- 1 1 1 1	-	-	2119793-1 LIMITER, ADJUSTMENT BOLT	63
-	- 3 3 3 3	-	-	992763-5 SCR, SET, SOC, CONE POINT, M3 x 4.0	62
-	- - - 1 1	-	-	5-18022-5 SCR, HEX HD CAP, M4 X 6.0	59
-	- 1 1 1 1	-	-	985575-3 SCR, FLT SKT HD CAP M3 X 10.0	57
-	- - - 1 1	-	-	1338685-1 PAWL, FEED	56
-	- 2 2 2 2	-	-	1-2168083-0 SCR, SKT HD CAP, RoHS, M4 X 10	52
-	- - - 1 2	-	-	18023-9 SCR, SKT HD CAP M4 X 6.0	49
-	- - - - 1	-	-	2119652-1 FEED CAM, PRE FEED	48
-	- 1 1 1 1	-	-	2079383-7 SCR, BHSC, RoHS (M8 X 25)	41
-	- 1 1 1 1	-	-	2119645-1 DISC, NUMBERED FA WIRE ADJUSTMENT	40
-	- 1 1 1 1	-	-	2119957-1 APPLICATOR SHIM PACK	39
-	- 1 1 1 1	-	-	2119644-1 RAM WASHER, PRECISION	38
-	- 1 1 1 1	-	-	1752356-3 SUPPORT, TERMINAL	34
-	- 2 2 2 2	-	-	2079383-5 SCR, BHSC, RoHS (M4 X 20)	33
-	- 1 1 1 1	-	-	2161328-1 HEX HEAD, FLANGED, M5 x 8mm LONG	32
-	- 1 1 1 1	-	-	1-1320908-0 SPACER, STRIP GUIDE	30
-	- 1 1 1 1	-	-	2119959-1 ASSEMBLY, STRIP GUIDE	29
-	- 1 1 1 1	-	-	455888-4 SPACER, CRIMPER	28
-	- 1 1 1 1	-	-	1320928-2 STRIP GUIDE	24
-	- 1 1 1 1	-	-	2168083-2 SCR, SKT HD CAP, RoHS, M4 X 8.0	21
-	- 1 1 1 1	-	-	1-18028-2 WASHER, FLAT, REG M4	20
-	- 1 1 1 1	-	-	2119533-1 STRIPPER, SIDE FEED	19
-	- 1 1 1 1	-	-	879657-2 HOLD DOWN	18
-	- 1 1 1 1	-	-	2119806-1 INSERT, SHEAR	13
-	- 1 1 1 1	-	-	3-22280-3 SPRING, COMPRESSION	12
-	- 1 1 1 1	-	-	1-356885-4 STOP, SHEAR	11
-	- 1 1 1 1	-	-	2119805-1 SHEAR HOLDER, FRONT	10
-	- 1 1 1 1	-	-	318707-1 FLOATING SHEAR, FRONT	9
-	- 1 1 1 1	-	-	5-1333201-1 ANVIL, COMBINATION	8
-	- 1 1 1 1	-	-	2-240641-4 SPACER	7
-	- 1 1 1 1	-	-	2-2119781-4 DEPRESSOR, SHEAR	5
-	- 1 1 1 1	-	-	238011-2 BLOCK, CRIMPER SPACER	4
-	- 1 1 1 1	-	-	1633966-7 CRIMPER, INSULATION O	3
-	- 1 1 1 1	-	-	455888-6 SPACER, CRIMPER	2
-	- 1 1 1 1	-	-	456402-1 CRIMPER, WIRE PREMIUM	1

DIMENSIONS:	TOLERANCES UNLESS OTHERWISE SPECIFIED:	OWN Y. LIN CHK G. BAILEY	ZOSEP2011 ZOSEP2011 ZOSEP2011	REVISIONS	DATE	BY	APPD
mm	0 PLC ±.5 1 PLC ±.5 2 PLC ±.13 3 PLC ±.13 4 PLC ±.001 ANGLES .1	S. XI	ZOSEP2011	NAME			
MATERIAL	FINISH	PRODUCT SPEC		APPLICATOR SPEC			
Customer Accessible Production Drawing		SCALE	1:2	SHEET	3	OF	4
APPLICATOR DATA		WIRE SIZE	.00779	CRIMP HEIGHT	2151035		

LOC	DIST	REVISIONS					
		P	LTN	DESCRIPTION	DATE	OWN	APVD
A	66	-	-	SEE SHEET 1	-	-	-

FEED TYPE MECHANICAL



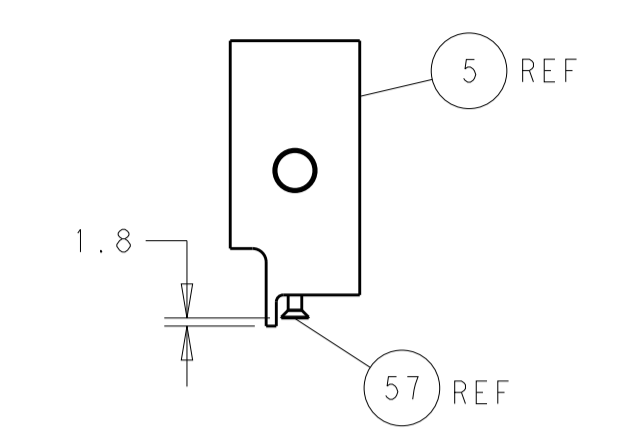
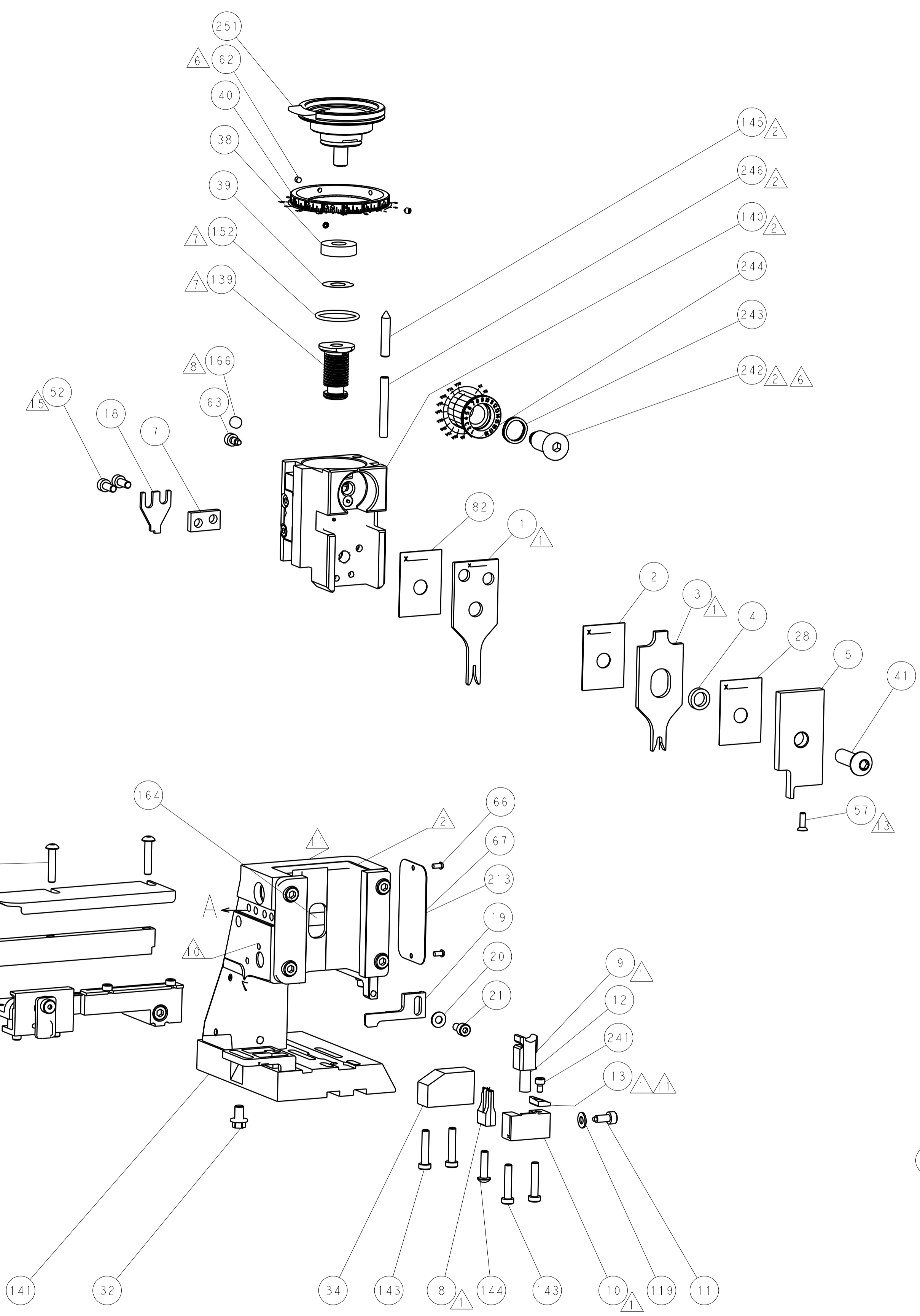
PNEUMATIC



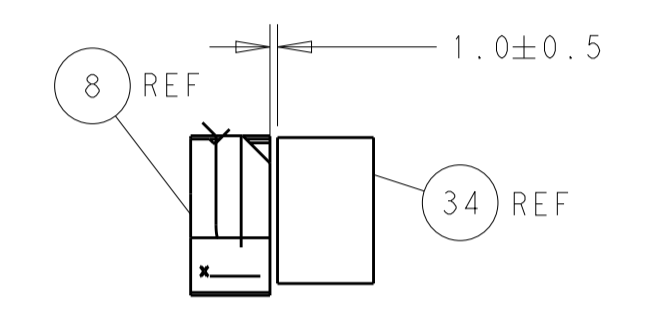
SERVO LATCH PLATE



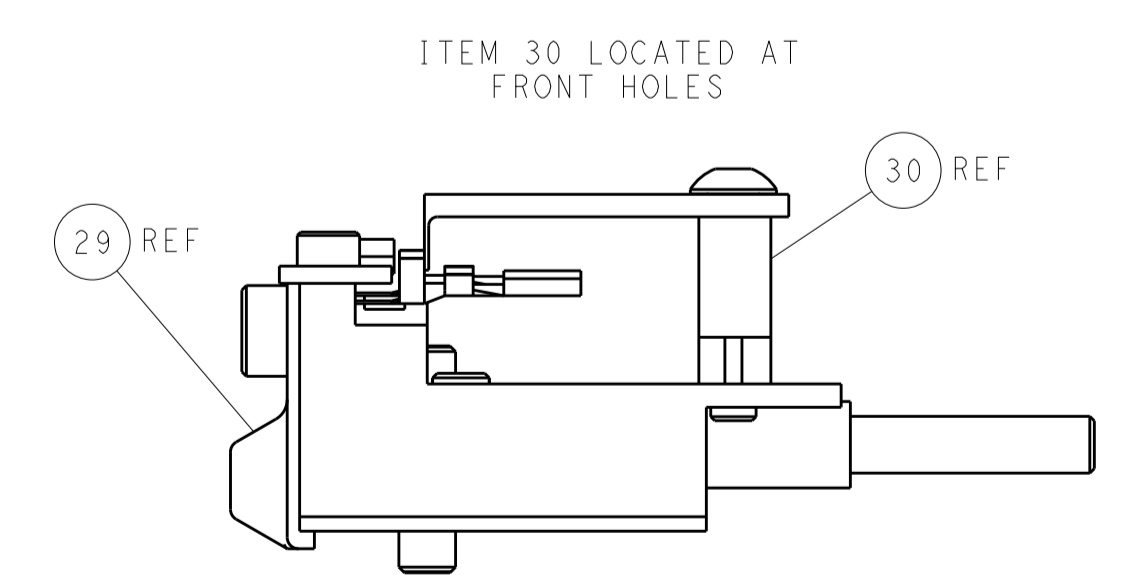
CAM POSITIONS



SHEAR DEPRESSOR DETAIL



TERMINAL SUPPORT LOCATION



FEED TRACK POSITION GUIDE BY INSULATION BARREL

PACIFIC VERSION
 Shown on sheets 3 of 4 & 4 of 4
 (Atlantic version shown on sheets 1 of 4 & 2 of 4)

<small>THIS DRAWING IS UNPUBLISHED. RELEASED FOR PUBLICATION. IT IS THE PROPERTY OF TYCO ELECTRONICS CORPORATION. IT IS SUBJECT TO CHANGE AND WITHOUT WARRANTY OF MERCHANTABILITY. SHOULD BE CONTACTED FOR THE LATEST REVISION.</small>		DWN: Y. YIN CHK: G. BAILEY APVD: S. XI	Z0SEP2011 Z0SEP2011 Z0SEP2011	TE Connectivity Harrisburg, PA 17105-3608
DIMENSIONS: mm 		TOLERANCES UNLESS OTHERWISE SPECIFIED: 0 PLC ±.5 1 PLC ±0.5 2 PLC ±0.13 3 PLC ±0.013 4 PLC ±0.001 ANGLES ±.1		NAME: Ocean Side Feed Applicator SIZE: A1 CAGE CODE: 00779 DRAWING NO: 2151035
MATERIAL:		WEIGHT:		RESTRICTED TO:
CUSTOMER ACCESSIBLE PRODUCTION DRAWING		SCALE: 1:2		SHEET 4 OF 4 REV B1