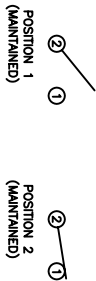


SCHEMATIC



SPECIFICATIONS

FUNCTION:
1PT OFF-ON

RATINGS:
ANSI/UL 1054 and CAN/CSA C22.2 No. 55 (E194579):
20A 125VAC [cULRus]
16A 250VAC [cULRus]
3/4HP 125/250VAC [cULRus]
CAN/CSA C22.2 No. 55 (233821):
16A 125/250VAC [CSA]
1/4HP 125/250VAC [CSA]

EN 61058-1:2002 and DIN/VDE 0830:2003-03 (40017440):
16(4)A 250V~ 1E4 μ 189/55 [ENEC10, VDE]
10(2)A 250V~ 5E4 μ 189/55 [ENEC10, VDE]
20(6)A 250V~ 1E4 μ 1125/55 [ENEC10, VDE]

CONTACT RESISTANCE:
Initial: 20mΩ Max.
1.000VAC for 1 Minute

INSULATION RESISTANCE:
100MΩ Min. at 500VDC

DIELECTRIC STRENGTH:
1.000VAC for 1 Minute

ELECTRICAL LIFE:
6,000 Cycles [cULRus, CSA]
10,000 Cycles [ENEC10, VDE: 16(4)A 250V~]
50,000 Cycles [ENEC10, VDE: 10(2)A 250V~]

TEMPERATURE:
Operating: -20°C to 105°C [cULRus, CSA]
Operating: -20°C to 85°C [ENEC10, VDE: 16(4)A 250V~]
Operating: -20°C to 125°C [ENEC10, VDE: 20(6)A 250V~]



COLORS AND MARKINGS

BODY:
Black

ACTUATOR:
Black/Red

MARKINGS:
ON/OFF Vertical (3)

MARKING COLOR:
Red

MATERIALS

BODY:
Polyamide 6/6 (PA66), UL94 V-2

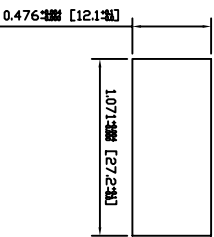
ACTUATOR:
Polyamide 6/6 (PA66), UL94 V-2

SPRING:
Steel

CONTACTS:
Silver Plated Copper

TERMINALS:
Silver Plated Copper
Silver Plated Brass

SUGGESTED PANEL CUTOUT



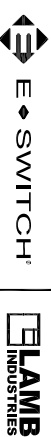
ACTUATOR	A	09/08/13	CAB
BODY	B <th>10/09/10</th> <th>CAB</th>	10/09/10	CAB
COLORS	A <th>09/08/13</th> <th>CAB</th>	09/08/13	CAB
MATERIALS	A <th>09/08/13</th> <th>CAB</th>	09/08/13	CAB
SPECIFICATIONS	B <th>10/01/27</th> <th>CAB</th>	10/01/27	CAB
REFERENCE	REV. <th>DATE</th> <th>BY</th>	DATE	BY

THE INFORMATION CONTAINED IN THIS DOCUMENT IS PROPRIETARY TO E-SWITCH AND IS NOT TO BE COPIED OR TRANSMITTED

RELEASE FOR PRODUCTION

19128 10/08/28 CAB DRAWN BY

DIMENSIONS	INCHES [MILLIMETERS]
GENERAL TOLERANCES	±0.008 [±0.2] / ±1'
SCALE	DRAWING NOT TO SCALE
PROJECTION	1st Angle



RSC241D1A83

14-RSC241D1A83

JUNE 28, 2010

REVISION A