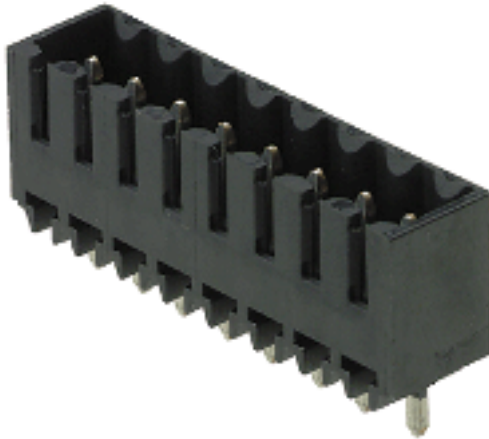


**System pitch 3.50 mm (0.138 inch)  
SL-SMT 3.50/02/180G 3.2SN BK BX**

**Weidmüller Interface GmbH & Co. KG**  
Klingenbergstraße 16  
D-32758 Detmold  
Germany  
Fon: +49 5231 14-0  
Fax: +49 5231 14-2083  
www.weidmueller.com



High-temperature-resistant male connector with 3.50 mm pitch for all customary soldering methods. Optimised for automatic assembly. Packed in box or tape. 3.2 mm solder pin suitable for reflow and wave soldering. These male connectors have space for labelling and can be coded.

- 250 V (IEC) / 300 V (UL)
- 15 A (IEC) / 10 A (UL)

### General ordering data

Order No.	<a href="#">1842320000</a>
Part designation	SL-SMT 3.50/02/180G 3.2SN BK BX
Version	PCB plug-in connector, male header, 3.50 mm, No. of poles: 2, 180°, Solder pin length: 3.2 mm, tinned, black, Reflow solder connection, Box
GTIN (EAN)	4032248353668
Qty.	100 pc(s).
Packaging	Box

**System pitch 3.50 mm (0.138 inch)**  
**SL-SMT 3.50/02/180G 3.2SN BK BX**

Weidmüller Interface GmbH & Co. KG  
 Klingenbergstraße 16  
 D-32758 Detmold  
 Germany  
 Fon: +49 5231 14-0  
 Fax: +49 5231 14-2083  
 www.weidmueller.com

**Technical data**

**System parameters**

Fitted to PCB	Reflow solder connection	Outgoing elbow	180°
Pitch in mm	3.5 mm	Pitch in inch	0.138 inch
No. of poles	2	Solder pin length	3.2 mm
Can be coded	Yes	No. of rows	1
Number of solder pins per pole	1	Diameter of solder eyelet	1.4 mm
Tolerance of the diameter of the solder eyelet	+ 0,1 mm	L1 in mm	3.5 mm
L1 in inch	0.138 inch	Insulation resistance	10 <sup>3</sup> Ω
Electric shock protection to DIN VDE 0470	IP 10	Electric shock protection to DIN VDE 57 106	Safe from back-of-hand touch

**Material data**

Insulating material	LCP GF	Colour	black
Insulating material group	IIIa	Flammability class UL 94	V-0
CTI	≥ 175	Temperature of glow-wire test	960 °C
Duration of glow-wire test	30 s	Contact material	CuSn
Contact surface	tinned	Highest continuous operating temperature, min.	-25 °C
Highest continuous operating temperature, max.	100 °C	Max. relative humidity during storage	80 %

**DIN IEC rating data**

Rated current, min. No. of poles (Tu=20°C)	15 A	Rated current, max. No. of poles (Tu=20°C)	12 A
Rated current, no. of poles (Tu=40°C), min.	13 A	Rated current, no. of poles (Tu=40°C), max.	10 A
Rated voltage at overvoltage category/pollution degree III/3	160 V	Rated impulse withstand voltage for overvoltage class/pollution severity III/3	2.5 kV
Rated voltage for overvoltage class/pollution severity III/2	160 V	Rated impulse withstand voltage for overvoltage class/pollution severity III/2	2.5 kV
Rated voltage for overvoltage class/pollution severity II/2	320 V	Rated impulse withstand voltage for overvoltage class/pollution severity II/2	2.5 kV
Short-time withstand current resistance	3 x 1s with 100 A		

**CSA rating data**

Rated voltage (Use group B)	300 V	Rated current (use group B)	10 A
Rated voltage (use group D)	300 V	Rated current (use group D)	10 A

**UL 1059 rating data**

Rated voltage (use group B)	300 V	Rated current (use group B)	10 A
Rated voltage (use group D)	300 V	Rated current (use group D)	10 A

**Approvals**

Approvals institutes CSA; GOSTME25; UR; ROHS

**Classifications**

ETIM 3.0	EC001284	eClass 5.1	27-26-07-04
eClass 6.0	27-26-07-04		

**Datasheet****System pitch 3.50 mm (0.138 inch)  
SL-SMT 3.50/02/180G 3.2SN BK BX****Weidmüller Interface GmbH & Co. KG**  
Klingenbergstraße 16  
D-32758 Detmold  
Germany  
Fon: +49 5231 14-0  
Fax: +49 5231 14-2083  
www.weidmueller.com**Technical data****Notes**

Notes

- Additional colours on request
- Gold-plated contact surfaces on request
- Rated current related to rated cross-section and min. No. of poles.
- Diameter of solder eyelet D = 1.4+0.1 mm
- Diameter of solder eyelet D = 1.5+0.1mm from 9-pole
- P on drg. = pitch
- Rated data refer only to the component itself. Clearance and creepage distances to other components are to be designed in accordance with the relevant application standards.

**Downloads**

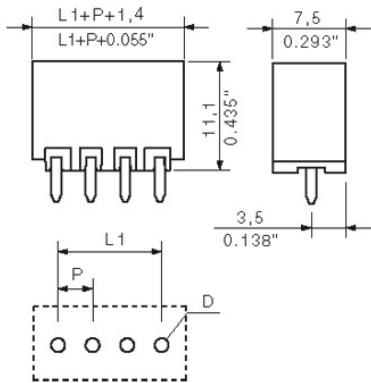
CAD Library (P-CAD Format - ASCII) [SL-SMT.LIA](#)  
CAD Library (P-CAD Format - Standard) [SL-SMT.LIB](#)

**Datasheet**

**System pitch 3.50 mm (0.138 inch)  
SL-SMT 3.50/02/180G 3.2SN BK BX**

Weidmüller Interface GmbH & Co. KG  
Klingenbergstraße 16  
D-32758 Detmold  
Germany  
Fon: +49 5231 14-0  
Fax: +49 5231 14-2083  
www.weidmueller.com

**Drawings**



## System pitch 3.50 mm (0.138 inch) SL-SMT 3.50/02/180G 3.2SN BK BX

**Weidmüller Interface GmbH & Co. KG**  
 Klingenbergstraße 16  
 D-32758 Detmold  
 Germany  
 Fon: +49 5231 14-0  
 Fax: +49 5231 14-2083  
 www.weidmueller.com

## Counterpart

### BL 3.5/270



Female connectors with clamping yoke screw system for connecting conductors at 3.50 mm pitch. They include space for labelling and can be coded.

- 0.20 - 1.5 mm<sup>2</sup> (IEC) / 28 - 14 AWG (UL)
- 250 V (IEC) / 300 V (UL)
- 17 A (IEC) / 10 A (UL)

### General ordering data

Order No.	Part designation	Version	GTIN (EAN)	Qty.	Packaging
<a href="#">1639470000</a>	BL 3.50/02/270 SN OR BX	PCB plug-in connector, female plug, 3.50 mm, No. of poles: 2, 270°, Clamping yoke connection, Clamping range, max.: 1.5 mm <sup>2</sup> , Box	4008190277024	100 pc(s).	Box
<a href="#">1639700000</a>	BL 3.50/02/270 SN BK BX	PCB plug-in connector, female plug, 3.50 mm, No. of poles: 2, 270°, Clamping yoke connection, Clamping range, max.: 1.5 mm <sup>2</sup> , Box	4008190277253	100 pc(s).	Box

### BLIDC 3.5 SN



Female connectors for fast wiring with IDC system for connecting conductors at 3.50 mm pitch. They include space for labelling and can be coded.

- 0.35 - 0.5 mm<sup>2</sup> (IEC) / 22 - 20 AWG (UL)
- 250 V (IEC) / 300 V (UL)
- 6 A (IEC) / 7 A (UL)

### General ordering data

Order No.	Part designation	Version	GTIN (EAN)	Qty.	Packaging
<a href="#">1750790000</a>	BLIDC 3.50/02/180 SN OR BX	PCB plug-in connector, female plug, 3.50 mm, No. of poles: 2, 90°/180°, IDC terminal, Clamping range, max.: 0.5 mm <sup>2</sup> , Box	4032248146086	100 pc(s).	Box
<a href="#">1770940000</a>	BLIDC 3.50/02/180 SN BK BX	PCB plug-in connector, female plug, 3.50 mm, No. of poles: 2, 90°/180°, IDC terminal, Clamping range, max.: 0.5 mm <sup>2</sup> , Box	4032248146338	100 pc(s).	Box

## System pitch 3.50 mm (0.138 inch) SL-SMT 3.50/02/180G 3.2SN BK BX

**Weidmüller Interface GmbH & Co. KG**  
 Klingenbergstraße 16  
 D-32758 Detmold  
 Germany  
 Fon: +49 5231 14-0  
 Fax: +49 5231 14-2083  
 www.weidmueller.com

## Counterpart

### BL 3.5/180



Female connectors with clamping yoke screw system for connecting conductors at 3.50 mm pitch. They include space for labelling and can be coded.

- 0.20 - 1.5 mm<sup>2</sup> (IEC) / 28 - 14 AWG (UL)
- 250 V (IEC) / 300 V (UL)
- 17 A (IEC) / 10 A (UL)

### General ordering data

Order No.	Part designation	Version	GTIN (EAN)	Qty.	Packaging
<a href="#">1740621001</a>	BL 3.50/02/180 SN OR BX PRT	PCB plug-in connector, female plug, 3.50 mm, No. of poles: 2, 180°, Clamping yoke connection, Clamping range, max.: 1.5 mm <sup>2</sup> , Box	4008190961503	100 pc(s).	Box
<a href="#">1606520000</a>	BL 3.50/02/180 SN DKGX BX	PCB plug-in connector, female plug, 3.50 mm, No. of poles: 2, 180°, Clamping yoke connection, Clamping range, max.: 1.5 mm <sup>2</sup> , Box	4008190170202	100 pc(s).	Box
<a href="#">1620450000</a>	BL 3.50/02/180 SN GY BX	PCB plug-in connector, female plug, 3.50 mm, No. of poles: 2, 180°, Clamping yoke connection, Clamping range, max.: 1.5 mm <sup>2</sup> , Box	4008190156756	100 pc(s).	Box
<a href="#">1597360000</a>	BL 3.50/02/180 SN OR BX	PCB plug-in connector, female plug, 3.50 mm, No. of poles: 2, 180°, Clamping yoke connection, Clamping range, max.: 1.5 mm <sup>2</sup> , Box	4008190435868	100 pc(s).	Box
<a href="#">1615670000</a>	BL 3.50/02/180 SN BK BX	PCB plug-in connector, female plug, 3.50 mm, No. of poles: 2, 180°, Clamping yoke connection, Clamping range, max.: 1.5 mm <sup>2</sup> , Box	4008190058890	100 pc(s).	Box

## System pitch 3.50 mm (0.138 inch) SL-SMT 3.50/02/180G 3.2SN BK BX

**Weidmüller Interface GmbH & Co. KG**  
 Klingenbergstraße 16  
 D-32758 Detmold  
 Germany  
 Fon: +49 5231 14-0  
 Fax: +49 5231 14-2083  
 www.weidmueller.com

## Counterpart

### BL 3.5/180LH



Female connectors with clamping yoke screw system for connecting conductors at 3.50 mm pitch. They include space for labelling and can be coded.

- 0.20 - 1.5 mm<sup>2</sup> (IEC) / 28 - 14 AWG (UL)
- 250 V (IEC) / 300 V (UL)
- 17 A (IEC) / 10 A (UL)

### General ordering data

Order No.	Part designation	Version	GTIN (EAN)	Qty.	Packaging
<a href="#">1687650000</a>	BL 3.50/02/180LH SN OR BX	PCB plug-in connector, female plug, 3.50 mm, No. of poles: 2, 180°, Clamping yoke connection, Clamping range, max.: 1.5 mm <sup>2</sup> , Box	4008190853204	100 pc(s).	Box
<a href="#">1687880000</a>	BL 3.50/02/180LH SN BK BX	PCB plug-in connector, female plug, 3.50 mm, No. of poles: 2, 180°, Clamping yoke connection, Clamping range, max.: 1.5 mm <sup>2</sup> , Box	4008190853433	100 pc(s).	Box

### BL 3.5/90F



Female connectors with clamping yoke screw system for connecting conductors at 3.50 mm pitch. They include space for labelling and can be coded.

- 0.20 - 1.5 mm<sup>2</sup> (IEC) / 28 - 14 AWG (UL)
- 250 V (IEC) / 300 V (UL)
- 17 A (IEC) / 10 A (UL)

### General ordering data

Order No.	Part designation	Version	GTIN (EAN)	Qty.	Packaging
<a href="#">1639010000</a>	BL 3.50/02/90F SN OR BX	PCB plug-in connector, female plug, 3.50 mm, No. of poles: 2, 90°, Clamping yoke connection, Clamping range, max.: 1.5 mm <sup>2</sup> , Box	4008190276553	100 pc(s).	Box
<a href="#">1639240000</a>	BL 3.50/02/90F SN BK BX	PCB plug-in connector, female plug, 3.50 mm, No. of poles: 2, 90°, Clamping yoke connection, Clamping range, max.: 1.5 mm <sup>2</sup> , Box	4008190276782	100 pc(s).	Box

## System pitch 3.50 mm (0.138 inch) SL-SMT 3.50/02/180G 3.2SN BK BX

**Weidmüller Interface GmbH & Co. KG**  
 Klingenbergstraße 16  
 D-32758 Detmold  
 Germany  
 Fon: +49 5231 14-0  
 Fax: +49 5231 14-2083  
 www.weidmueller.com

## Counterpart

### BL 3.5/270F



Female connectors with clamping yoke screw system for connecting conductors at 3.50 mm pitch. They include space for labelling and can be coded.

- 0.20 - 1.5 mm<sup>2</sup> (IEC) / 28 - 14 AWG (UL)
- 250 V (IEC) / 300 V (UL)
- 17 A (IEC) / 10 A (UL)

### General ordering data

Order No.	Part designation	Version	GTIN (EAN)	Qty.	Packaging
<a href="#">1640160000</a>	BL 3.50/02/270F SN BK BX	PCB plug-in connector, female plug, 3.50 mm, No. of poles: 2, 270°, Clamping yoke connection, Clamping range, max.: 1.5 mm <sup>2</sup> , Box	4008190277727	100 pc(s).	Box
<a href="#">1639930000</a>	BL 3.50/02/270F SN OR BX	PCB plug-in connector, female plug, 3.50 mm, No. of poles: 2, 270°, Clamping yoke connection, Clamping range, max.: 1.5 mm <sup>2</sup> , Box	4008190277482	100 pc(s).	Box

### BL 3.5/90



Female connectors with clamping yoke screw system for connecting conductors at 3.50 mm pitch. They include space for labelling and can be coded.

- 0.20 - 1.5 mm<sup>2</sup> (IEC) / 28 - 14 AWG (UL)
- 250 V (IEC) / 300 V (UL)
- 17 A (IEC) / 10 A (UL)

### General ordering data

Order No.	Part designation	Version	GTIN (EAN)	Qty.	Packaging
<a href="#">1638780000</a>	BL 3.50/02/90 SN BK BX	PCB plug-in connector, female plug, 3.50 mm, No. of poles: 2, 90°, Clamping yoke connection, Clamping range, max.: 1.5 mm <sup>2</sup> , Box	4008190276324	100 pc(s).	Box
<a href="#">1638550000</a>	BL 3.50/02/90 SN OR BX	PCB plug-in connector, female plug, 3.50 mm, No. of poles: 2, 90°, Clamping yoke connection, Clamping range, max.: 1.5 mm <sup>2</sup> , Box	4008190276102	100 pc(s).	Box



## System pitch 3.50 mm (0.138 inch) SL-SMT 3.50/02/180G 3.2SN BK BX

**Weidmüller Interface GmbH & Co. KG**  
Klingenbergstraße 16  
D-32758 Detmold  
Germany  
Fon: +49 5231 14-0  
Fax: +49 5231 14-2083  
www.weidmueller.com

## Counterpart

### BL 3.5/180F



Female connectors with clamping yoke screw system for connecting conductors at 3.50 mm pitch. They include space for labelling and can be coded.

- 0.20 - 1.5 mm<sup>2</sup> (IEC) / 28 - 14 AWG (UL)
- 250 V (IEC) / 300 V (UL)
- 17 A (IEC) / 10 A (UL)

### General ordering data

Order No.	Part designation	Version	GTIN (EAN)	Qty.	Packaging
<a href="#">1740711001</a>	BL 3.50/02/180F SN OR BX PRT	PCB plug-in connector, female plug, 3.50 mm, No. of poles: 2, 180°, Clamping yoke connection, Clamping range, max.: 1.5 mm <sup>2</sup> , Box	4008190961695	100 pc(s).	Box
<a href="#">1615780000</a>	BL 3.50/02/180F SN BK BX	PCB plug-in connector, female plug, 3.50 mm, No. of poles: 2, 180°, Clamping yoke connection, Clamping range, max.: 1.5 mm <sup>2</sup> , Box	4008190061272	100 pc(s).	Box
<a href="#">1606640000</a>	BL 3.50/02/180F SN OR BX	PCB plug-in connector, female plug, 3.50 mm, No. of poles: 2, 180°, Clamping yoke connection, Clamping range, max.: 1.5 mm <sup>2</sup> , Box	4008190187088	100 pc(s).	Box

### BLIDCB 3.5



Female connectors for fast wiring with IDC system for connecting conductors at 3.50 mm pitch. They include space for labelling and can be coded.

- 0.35 - 0.5 mm<sup>2</sup> (IEC) / 22 - 20 AWG (UL)
- 250 V (IEC) / 300 V (UL)
- 6 A (IEC) / 7 A (UL)

### General ordering data

Order No.	Part designation	Version	GTIN (EAN)	Qty.	Packaging
<a href="#">1751380000</a>	BLIDCB 3.50/02/- SN OR BX	PCB plug-in connector, female plug, 3.50 mm, No. of poles: 2, 90°/270°, IDC terminal, Clamping range, max.: 0.5 mm <sup>2</sup> , Box	4032248174201	10 pc(s).	Box
<a href="#">1770670000</a>	BLIDCB 3.50/02/- SN BK BX	PCB plug-in connector, female plug, 3.50 mm, No. of poles: 2, 90°/270°, IDC terminal,	4032248174454	10 pc(s).	Box

## Datasheet

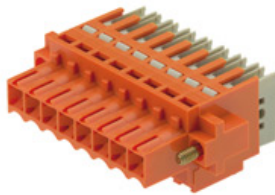
**System pitch 3.50 mm (0.138 inch)**  
**SL-SMT 3.50/02/180G 3.2SN BK BX**

**Weidmüller Interface GmbH & Co. KG**  
 Klingenbergstraße 16  
 D-32758 Detmold  
 Germany  
 Fon: +49 5231 14-0  
 Fax: +49 5231 14-2083  
 www.weidmueller.com

## Counterpart

Clamping range, max.: 0.5  
 mm<sup>2</sup>, Box

### BLIDCB 3.5F



Female connectors for fast wiring with IDC system for connecting conductors at 3.50 mm pitch. They include space for labelling and can be coded.

- 0.35 - 0.5 mm<sup>2</sup> (IEC) / 22 - 20 AWG (UL)
- 250 V (IEC) / 300 V (UL)
- 6 A (IEC) / 7 A (UL)

### General ordering data

Order No.	Part designation	Version	GTIN (EAN)	Qty.	Packaging
<a href="#">1751450000</a>	BLIDCB 3.50/02/-F SN OR BX	PCB plug-in connector, female plug, 3.50 mm, No. of poles: 2, 90°/270°, IDC terminal, Clamping range, max.: 0.5 mm <sup>2</sup> , Box	4032248174386	10 pc(s).	Box
<a href="#">1770740000</a>	BLIDCB 3.50/02/-F SN BK BX	PCB plug-in connector, female plug, 3.50 mm, No. of poles: 2, 90°/270°, IDC terminal, Clamping range, max.: 0.5 mm <sup>2</sup> , Box	4032248174522	10 pc(s).	Box