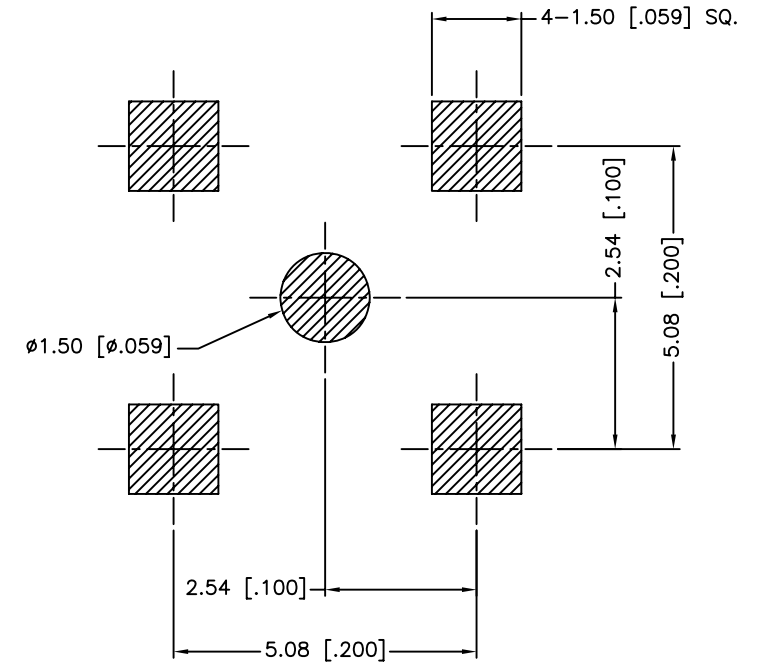
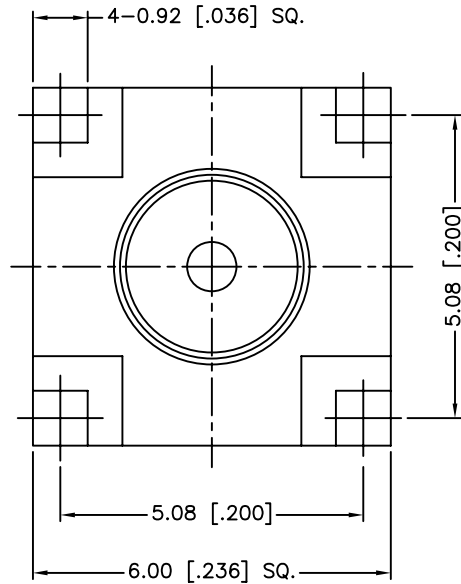
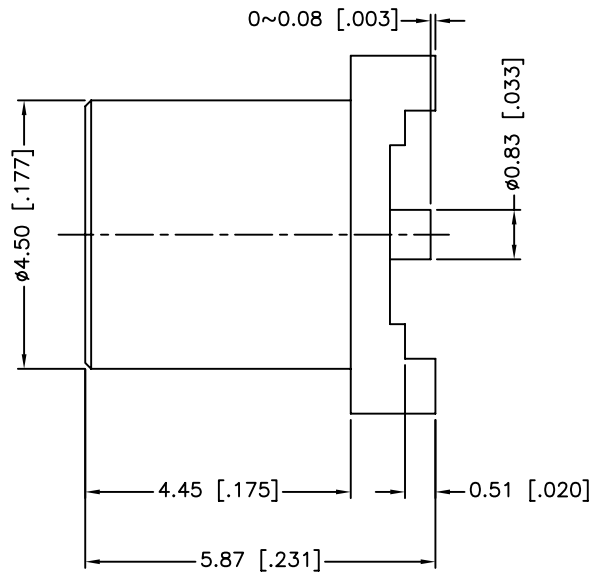


REV.	DATE	ECR NO.	DESCRIPTION
NC	09/02/99	XXXXXX	INITIAL RELEASE
A	08/25/04	XXXXXX	MODIFY RECOMMENDED PCB LAYOUT
B	11/19/13	2662	CORRECT RECOMMENDED PCB LAYOUT, ADD ELECTRICAL/MECHANICAL NOTES, UPDATE DRAWING FORMAT



RECOMMENDED PCB LAYOUT

1. IMPEDANCE: 75 OHM
2. FREQUENCY RANGE: 0-6 GHZ
3. DIELECTRIC WITHSTANDING VOLTAGE: 1000 VRMS, MIN.
4. DURABILITY: 500 CYCLES MIN.
5. TEMPERATURE RANGE: -65°C TO +165°C

UNLESS OTHERWISE SPECIFIED DIMENSIONS ARE IN MILLIMETERS. DIMENSIONS IN [] ARE IN INCHES AND FOR CUSTOMER REFERENCE ONLY.
 UNLESS OTHERWISE SPECIFIED
 TOLERANCES FOR MILLIMETERS ARE:
 <0.5 ± 0.05mm
 0.5 - 6mm ± 0.10mm
 6 - 30mm ± 0.20mm
 30 - 120mm ± 0.30mm
 ANGLES ± 1°
 UNLESS OTHERWISE SPECIFIED
 TOLERANCES FOR INCHES ARE:
 <.020 ± 0.002"
 .020 - .236 = ± 0.004"
 .236 - 1.180 = ± 0.007"
 1.180 - 4.724 = ± 0.012"
 ANGLES ± 1°

QTY	FINISH	MATERIAL	DESCRIPTION
1	GOLD	BER. COPPER	CONTACT PIN
1	NATURAL	PTFE	INSULATOR
1	GOLD	BRASS	BODY

APPROVALS		DATE
DRAWN	M.ZHANG	11/20/13
CHECKED		
ISSUED		
SHEET	1 OF 1	
CAD FILE	C:/CONNEX/252117-75.DWG	

<h1>Amphenol Connex</h1>			
PART DESCRIPTION MCX P.C. BOARD RECEPT. JACK SURFACE MOUNT - 75 OHM			
PART NO. 252117-75			
DWG. NO.	252117-75.DWG	REV.	B
SIZE	A	SCALE	NA

DO NOT SCALE DRAWING