

GEENA LENS FOR SEOUL P3 & P4 LEDs




 SEOUL SEMICONDUCTOR



- Specially designed for Seoul Semiconductor P4 series of LEDs.
- Special care taken to make a uniform white or warm white illumination. Lens work well with other colors, too.
- Lens material optical grade PMMA. Allows use of high current and temperature conditions
- Best available optical efficiency, more than 90%, with an extremely good cutoff of light

LENS TYPES

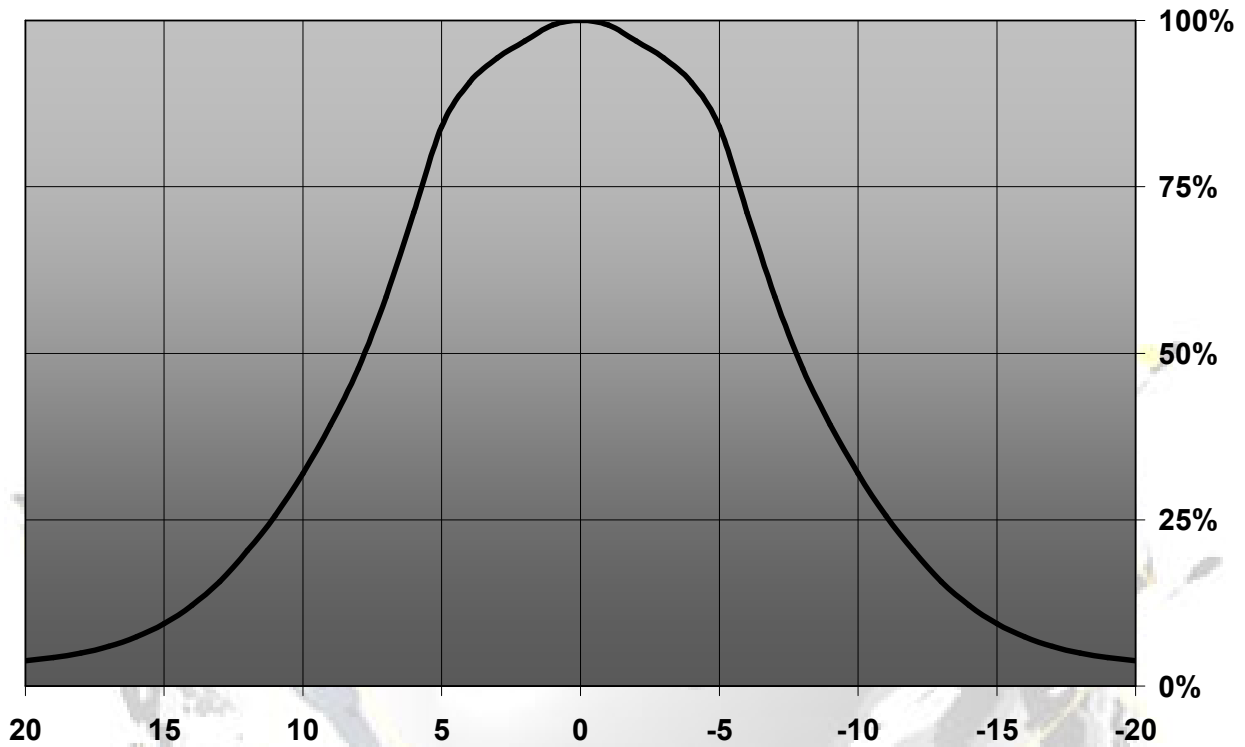
NAME	ORDERING CODE	FWHM Angle
Geena	C10959_Geena	±8°



© Ledil Oy – PRELIMINARY - Subject to change without prior notice

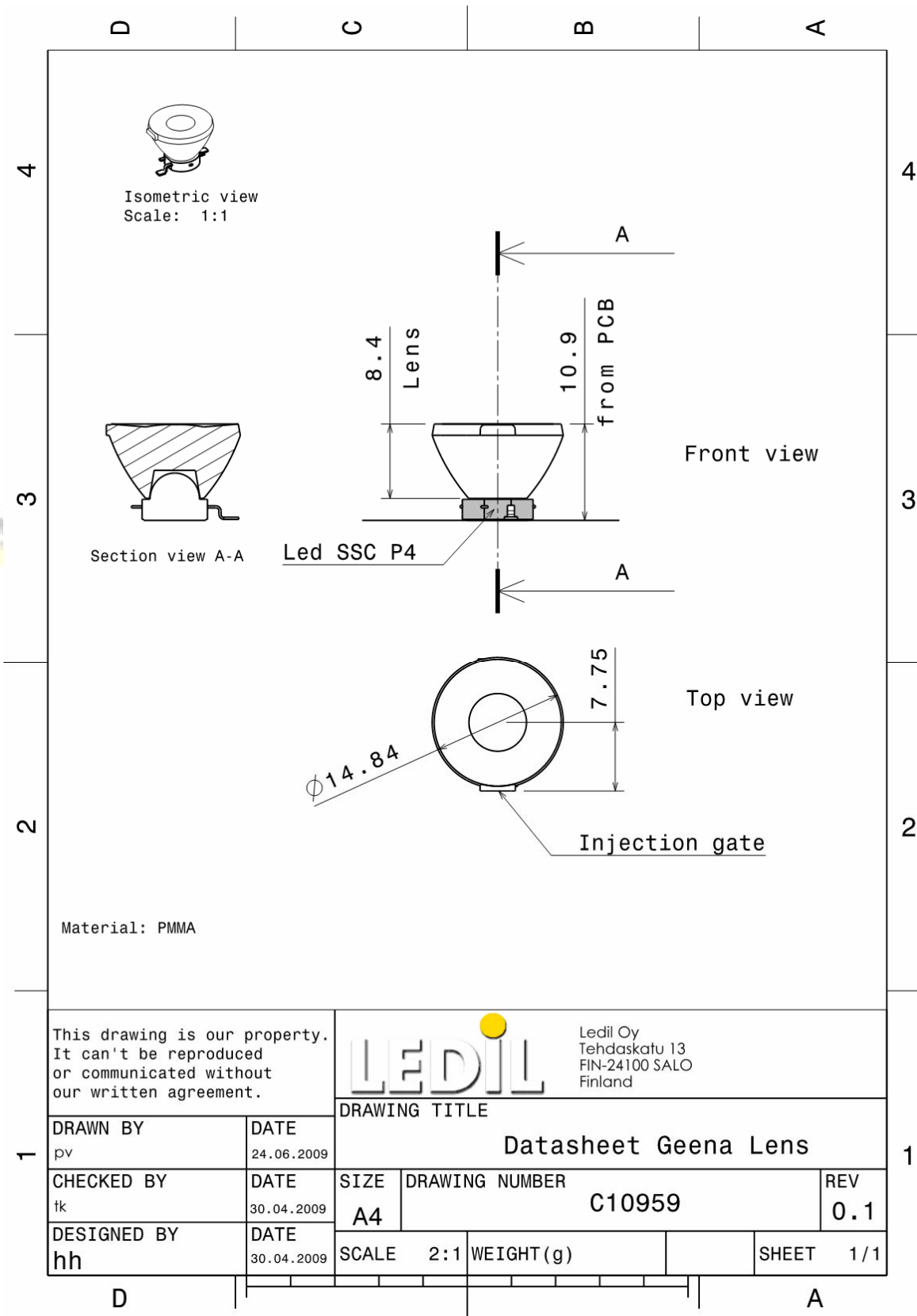
MEASUREMENT DATA

Relative Intensity of C10959_Geena



EULUMDAT & IES FILES AVAILABLE BY REQUEST

DRAWINGS



© Ledil Oy - PRELIMINARY - Subject to change without prior notice