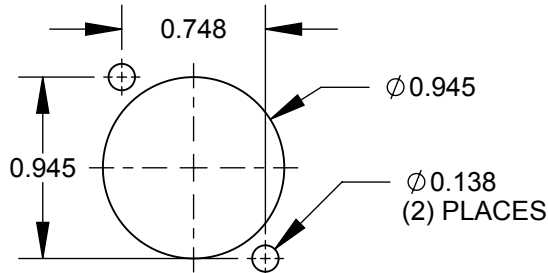


M3 x 0.5  
METRIC THREAD  
(2) PLACES

**EHBNC2M3 & EHBNC2BM3**



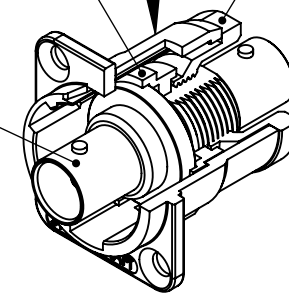
**RECOMMENDED  
PANEL CUT-OUT**

STANDARD E SERIES HOUSING  
SEE TABLE FOR FINISH

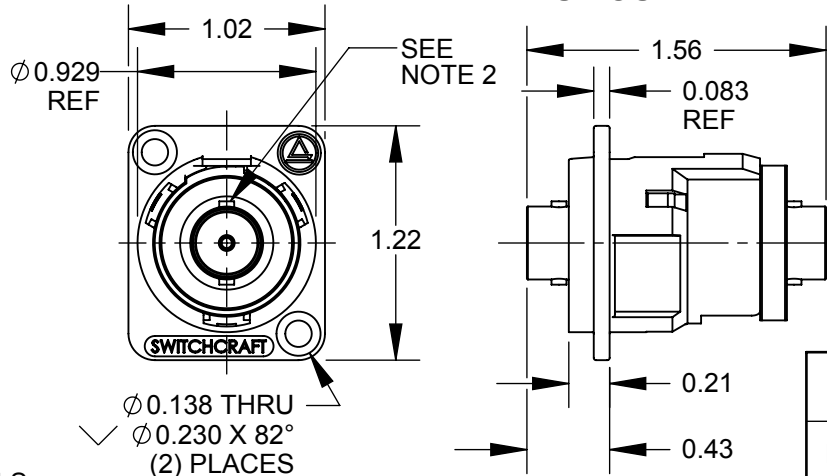
HOUSING INSERT

RETAINING NUT

BNC-TO-BNC  
JACK



**EHBNC2 SHOWN**



**NOTES:**

**1. MATERIALS:**

HOUSING - ZINC ALLOY  
HOUSING INSERT - THERMOPLASTIC, BLACK  
RETAINING NUT - THERMOPLASTIC, BLACK  
BNC JACK - COPPER ALLOY, NICKEL PLATED

**E** 2. ORIENTATION OF BAYONET POSTS  $\pm 10^\circ$  FROM VERTICAL.

3. THESE PRODUCTS ARE RoHS COMPLIANT.

PART NUMBER	HOUSING FINISH	MOUNTING HOLES
EHBNC2	NICKEL PLATED	COUNTERSINK FOR #4 FLAT HEAD SCREWS
EHBNC2B	BLACK CHROME	COUNTERSINK FOR #4 FLAT HEAD SCREWS
EHBNC2M3	NICKEL PLATED	M3 x 0.5 THREAD
EHBNC2BM3	BLACK CHROME	M3 x 0.5 THREAD

**CUSTOMER DRAWING**

					THIS DRAWING DESCRIBES A DESIGN CONSIDERED PROPRIETARY IN NATURE, DEVELOPED AND MANUFACTURED BY SWITCHCRAFT INC. AND IS RELEASED ON A CONFIDENTIAL BASIS FOR IDENTIFICATION PURPOSES ONLY.					
					SIZE	WIDTH	MULT	LBS/M	TEMPER	
					FINISH			MATERIAL		
					SPEC No.			SPEC No.		
					FIRST USED ON		SCALE 1:1			
E	27546	7-24-15	TO	TJK	DATE DRAWN	BY	CHKD	APVD	<b>Switchcraft</b> <sup>®</sup>	
D	27482	04/20/15	PC	TJK	5/5/03	MA	MA	MA		
C	26415	7/17/09	RS	TJK			10/31/03	10/31/03		
REV	ECO NUMBER	DATE	BY	APVD	NAME <b>E SERIES CONNECTOR, BNC FEEDTHROUGH, RoHS</b>				PART No. <b>EHBNC2 SERIES</b>	REV <b>E</b>
REVISIONS					DO NOT SCALE DRAWING					

