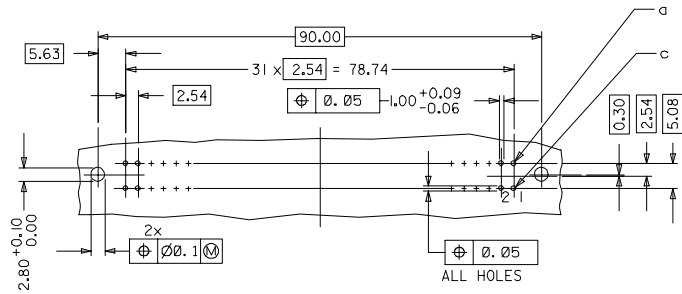
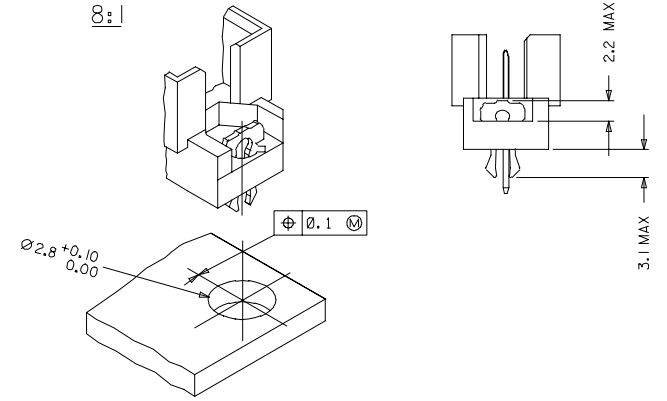


RECOMMENDED PCB LAYOUT  
COMPONENT SIDE



WITH MOUNTING CLIPS



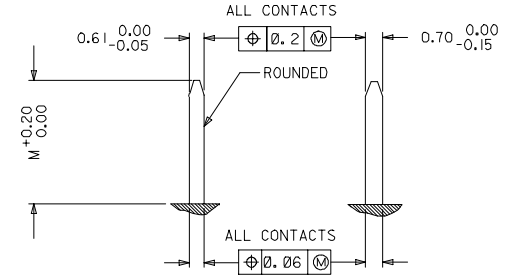
- NOTES:
- MATERIALS: THERMOPLASTIC POLYESTER, GLASS FILLED, UL94V-0 COLOUR: PEBBLE GREY RAL 7032  
TERMINAL - PHOSPHOR BRONZE  
MOUNTING CLIP: STEEL
  - FINISH: TERMINAL:-  
CONTACT AREA  
 1. PERFORMANCE LEVEL 1: SELECTIVE GOLD (Au), THICKNESS = 1.1 MICROMETER  
 OVER NICKEL, THICKNESS = 1.25 MICROMETER  
 2. PERFORMANCE LEVEL 2: SELECTIVE GOLD (Au), THICKNESS = 0.6 MICROMETER  
 OVER NICKEL, THICKNESS = 1.25 MICROMETER  
 3. PERFORMANCE LEVEL 3: SELECTIVE GOLD (Au), THICKNESS = 0.3 MICROMETER  
 OVER NICKEL, THICKNESS = 1.25 MICROMETER  
 PRESS-IN AND WIRE WRAP AREA :  
 SELECTIVE TIN, THICKNESS = 2.5 MICROMETER  
 OVER NICKEL, THICKNESS = 1.25 MICROMETER OVERALL
  - MOUNTING CLIP:-  
TIN (Sn), THICKNESS = 5-10 MICROMETER,  
OVER NICKEL (Ni), THICKNESS = 2.5 MICROMETER
  - FOR NON MOUNTING CLIP OPTION, CONNECTOR TO BE SECURED WITH  
RIVETS: 2 TUBULAR RIVETS 2.5 x 0.3 ... DIN 7340  
SCREWS: 2 CHEESEHEAD SCREWS M2.5 x .... DIN 84 AND 2 HEXAGONAL NUTS M2.5 DIN 934
  - MATERIAL NUMBER, BATCH CODE, UL AND CSA MARKING  
TO BE PRINTED ON THE CONNECTOR
  - CUT FACE OF TIP WITHOUT PLATING PERMITTED
  - PRODUCT SPECIFICATION - PS-36515-001

RoHS COMPLIANT

EC No: P2007-0044 DRINGSATTI/MARAD 2006/10/10 CHOKKOSUDHIR 2006/10/11 APPRESSUDHIR 2006/10/15	QUALITY SYMBOLS ▽=0 ▽=0	GENERAL TOLERANCES (UNLESS SPECIFIED) mm INCH		DIMENSION STYLE MM ONLY		SCALE	DESIGN UNITS	THIRD ANGLE PROJECTION
		4 PLACES ± 0.15 3 PLACES ± 0.05 2 PLACES ± 0.1 1 PLACE ± 0.15	± 0.15 ± 0.05 ± 0.1 ± 0.15	DATE 1999/09/24 DATE 1999/09/24 DATE 1999/09/24 DATE 1999/09/24	2:1 METRIC	ASSEMBLY, DIN 41612 PRESS-IN, WIRE WRAP MOLEX INCORPORATED		
DRAFT WHERE APPLICABLE MUST REMAIN WITHIN DIMENSIONS	SIZE A 1	MATERIAL NO. SEE CHART	DOCUMENT NO. SD-36515-007	SHEET NO. 1 OF 2	THIS DRAWING CONTAINS INFORMATION THAT IS PROPRIETARY TO MOLEX INCORPORATED AND SHOULD NOT BE USED WITHOUT WRITTEN PERMISSION			

MATERIAL No.	MOLEX ENG No.	PERF LEVEL	PLATING	CONTACT SEQUENCE/ROW	DIM "L" MM	MOUNTING CLIP	FMLB
36515-0145	MM-B1460-R963	1	Au + Ni	1,2,3...32 a+c	13.25	NO	NO
36515-0146	MM-B1560-R963	2	Au + Ni	1,2,3...32 a+c	13.25	NO	NO
36515-0147	MM-B1660-R963	3	Au + Ni	1,2,3...32 a+c	13.25	NO	NO
36515-0151	MM-B1460-R913	1	Au + Ni	1,2,3...32 a+c	13.25	YES	NO
36515-0152	MM-B1560-R913	2	Au + Ni	1,2,3...32 a+c	13.25	YES	NO
36515-0153	MM-B1660-R913	3	Au + Ni	1,2,3...32 a+c	13.25	YES	NO
36515-0157	MM-B1460-R933	1	Au + Ni	1,2,3...32 a+c	13.25	NO	1,32a 1,32c
36515-0158	MM-B1560-R933	2	Au + Ni	1,2,3...32 a+c	13.25	NO	1,32a 1,32c
36515-0159	MM-B1660-R933	3	Au + Ni	1,2,3...32 a+c	13.25	NO	1,32a 1,32c
36515-0163	MM-B1460-R953	1	Au + Ni	1,2,3...32 a+c	13.25	YES	1,32a 1,32c
36515-0164	MM-B1560-R953	2	Au + Ni	1,2,3...32 a+c	13.25	YES	1,32a 1,32c
36515-0165	MM-B1660-R953	3	Au + Ni	1,2,3...32 a+c	13.25	YES	1,32a 1,32c

DETAILY      DETAILX



PRE MATING CONTACTS	5.4
NORMAL CONTACTS	4.8
	M

RoHS COMPLIANT

EC No: 2007-0044 DRAWING APPROVED 2006/10/10 CHECKED BY APPRESSOR 2006/10/11 APPROVED BY APPRESSOR 2006/10/15	QUALITY SYMBOLS	GENERAL TOLERANCES (UNLESS SPECIFIED)	DIMENSION STYLE	SCALE	DESIGN UNITS	THIRD ANGLE PROJECTION															
	$\nabla=0$ $\nabla=0$	<table border="1"> <tr><th></th><th>mm</th><th>INCH</th></tr> <tr><td>4 PLACES</td><td>± 0.05</td><td>± 0.002</td></tr> <tr><td>3 PLACES</td><td>± 0.05</td><td>± 0.002</td></tr> <tr><td>2 PLACES</td><td>± 0.1</td><td>± 0.004</td></tr> <tr><td>1 PLACE</td><td>± 0.15</td><td>± 0.006</td></tr> </table>		mm	INCH	4 PLACES	± 0.05	± 0.002	3 PLACES	± 0.05	± 0.002	2 PLACES	± 0.1	± 0.004	1 PLACE	± 0.15	± 0.006	MM ONLY	2:1	METRIC	THIRD ANGLE PROJECTION
		mm	INCH																		
	4 PLACES	± 0.05	± 0.002																		
3 PLACES	± 0.05	± 0.002																			
2 PLACES	± 0.1	± 0.004																			
1 PLACE	± 0.15	± 0.006																			
		DRAWN BY SS DATE 1999/09/24 CHECKED BY GJLOWE DATE 1999/09/24 APPROVED BY GJLOWE DATE 1999/09/24	TITLE	ASSEMBLY, DIN 41612																	
		DRAFT WHERE APPLICABLE MUST REMAIN WITHIN DIMENSIONS	MATERIAL NO. SEE CHART SIZE A 1	DOCUMENT NO. SD-36515-007 SHEET NO. 2 OF 2	PRESS-IN, WIRE WRAP MOLEX INCORPORATED																