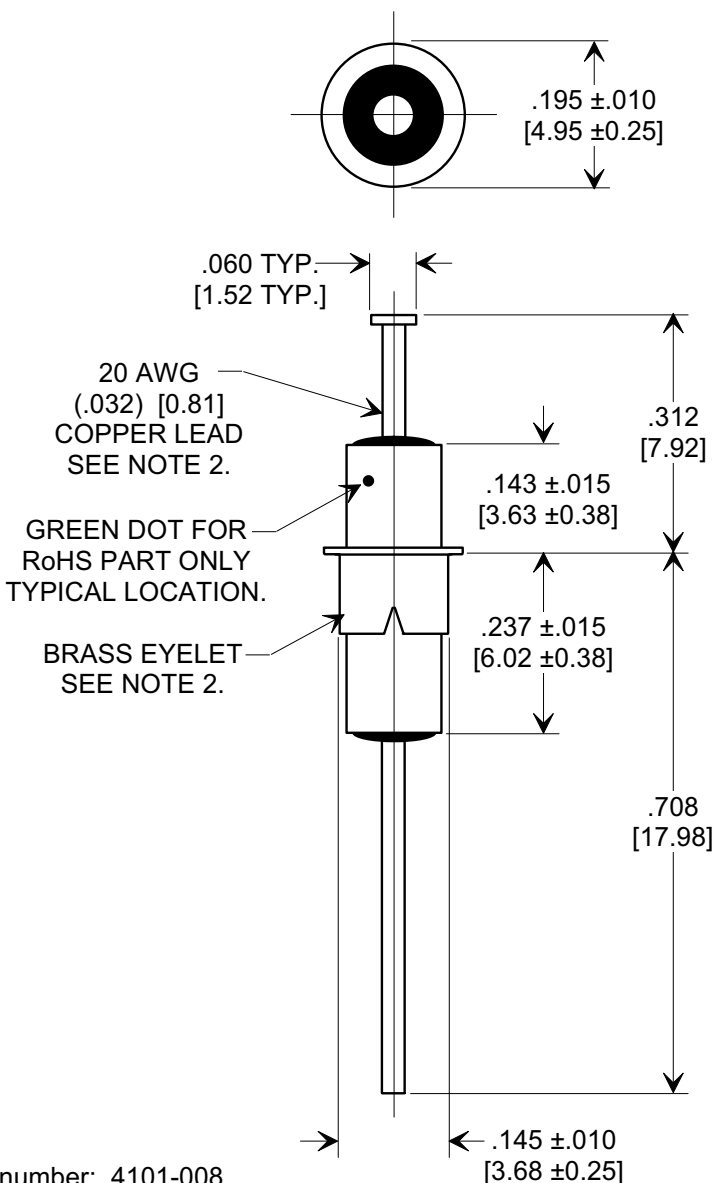
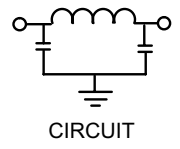
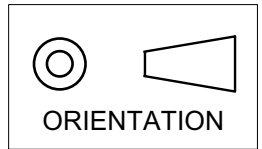


MARKETING SALES DRAWING
DIMENSIONS IN INCHES - DO NOT SCALE THIS DRAWING
DIMENSIONS IN METRIC - []

Electrical Testing
per Tusonix standard
test plans and Mil-Std-202
Test Methods.



Notes:

- Tusonix Standard part number: 4101-008.
 Tusonix RoHS compliant part number: 4101-008 LF.
 Customer must specify Standard or RoHS part number when ordering.
- Lead finish: Standard Part No.: 60/40 solder plated. RoHS Part No. Silver Plated.
 Eyelet finish Standard Part No.: 60/40 solder plated. RoHS Part No. Silver Plated.
- Part Marking: Standard has no marking. RoHS part: Green Dot.

MIN. CAP (pF)	WORKING VOLTAGE (WVDC)		CURRENT Idc	I.R. MIN. @ 100 (VDC.)	DWV 25 SEC. (VDC)	MINIMUM NO-LOAD INSERTION LOSS (dB) AT 25°C PER MIL-STD-220			
	85°C	125°C				10 MHz	100 MHz	1 GHz	10 GHz
5500	200 VDC	100 VDC	10A	10 G Ω	400	14	55	70	70

X-2015 Rev-0	REVISION RECORD						--TOLERANCES-- Unless Otherwise Specified	Title														
	0	Original Release						EYELET STYLE EMI FILTER														
	1	CHANGED TOL. +.005, -.010 WAS ±.010, 200 VDC WAS 140 & 70. E.C. 11-05-87	1	WAS SK6848-000-S ADDED .060 TYP DIM. E.C. 11-23-87	2	DWG. # WAS 4101-008-000-S. E.C. 01-21-88	3	4301	RDN TO COMP FMT. & ADDED METRIC. DIM. .143 WAS .156 & DIM .237 WAS .250. DELETED S. WASHERS. S.M. 01-19-00	4	20000120-1-01	TOL. ±.010 WAS +.005 - .010. 100VDC WAS 200. ADDED TINNED COPPER.S.M. 07-14-03	5	20030711-1-02	ADDED NOTES, IR & DWV. S.M. 09-14-05	6	20050829-1-06		Drawn	S.M. 01-19-00	Scale	4 X
							ANGLES ±	Approved		T.C. 01-19-00												
							TUSONIX	A	4101-008													
							TUCSON, ARIZONA															