

Contact assignment:

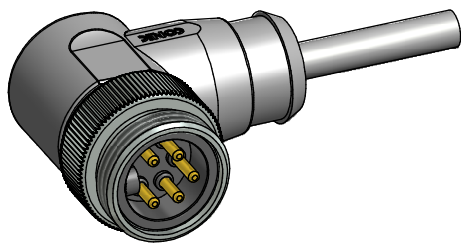
- 1 ■ black
- 2 ■ blue
- PE ■ green-yellow
- 4 ■ brown
- 5 ■ white

Technical specification:

Rated voltage: IEC 60664-1	300 V
Overvoltage category: IEC 60664-1	2
Overvoltage: IEC 60664-1	2,7 kV
Current rating: IEC 60512-3 at 40°C	0,75mm ² 1,5mm ² 8 A 10 A
Insulation resistance: IEC 60512	>=100 MΩ
Pollution degree: IEC 60664-1	3/2
Degree of protection: IEC 60529	IP 68, in mated condition
Temperature range: IEC 60664-1	-30°C ... +80°C
Mating cycles: IEC 60512-9a	>=100
Termination:	crimped

Materials:

Contact:	CuZn
Contact plating:	Nickel, gold plated
Contact carrier:	TPU, UL 94
Coupling screw:	CuZn, nickel plated
Moulding body:	TPU, UL 94, grey



Part no:	Description:	Length L:	Cable:
41-01088	SAL - 7/8 - RSW4PE - 2 / A3	2m	PVC, UL 2464, grey, 5x0,75mm ² Cable: 781-A37500
41-01089	SAL - 7/8 - RSW4PE - 3 / A3	3m	
41-01090	SAL - 7/8 - RSW4PE - 5 / A3	5m	
41-01091	SAL - 7/8 - RSW4PE - 10 / A3	10m	
41-xxxxx	SAL - 7/8 - RSW4PE - ... / A3	x	
41-01185	SAL - 7/8 - RSW4PE - 2 / A3 / 150	2m	PVC, UL 2464, grey, 5x1,50mm ² Cable: 781-A38500
41-01186	SAL - 7/8 - RSW4PE - 3 / A3 / 150	3m	
41-01187	SAL - 7/8 - RSW4PE - 5 / A3 / 150	5m	
41-01188	SAL - 7/8 - RSW4PE - 10 / A3 / 150	10m	
41-xxxxx	SAL - 7/8 - RSW4PE - ... / A3 / 150	x	

D see data sheet cable

DO NOT ALTER CAD DRAWING BY HAND Directive 2002/95/EC RoHS compliant	Index: b 02.09.10 KH Ä3736 technical specification changed, part no. cable in table added, neutral line added	dim. in mm		title: <h2 style="text-align: center;">Male connector 7/8" angled</h2>	
	tolerance of cable: L ≤ 4m: L + 40mm L > 4m: L + 1%	date 10.10.07	name Franz		
		general tolerance: 0 ± 0,50mm 0,0 ± 0,25mm 0,00 ± 0,10mm	appd. 10.10.07	Mankopf	part no: see table
	THIS DRAWING MAY NOT BE COPIED OR REPRODUCED IN ANY WAY, AND MAY NOT BE PASSED ON TO A THIRD PARTY WITHOUT WRITTEN PERMISSION. OWNERSHIP AND COPYRIGHT OF CONEC GmbH				