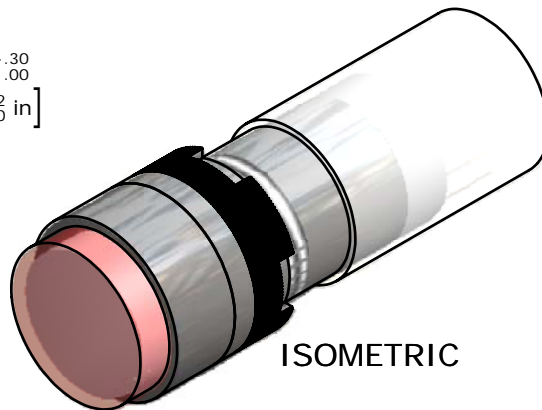
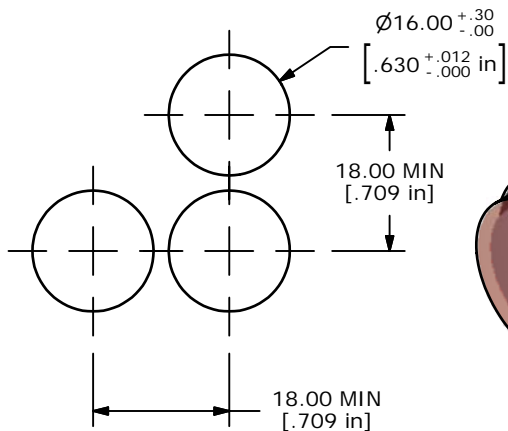
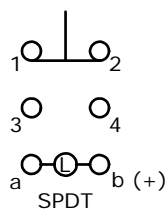


▲ PARTS LIST

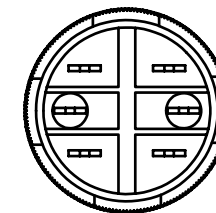
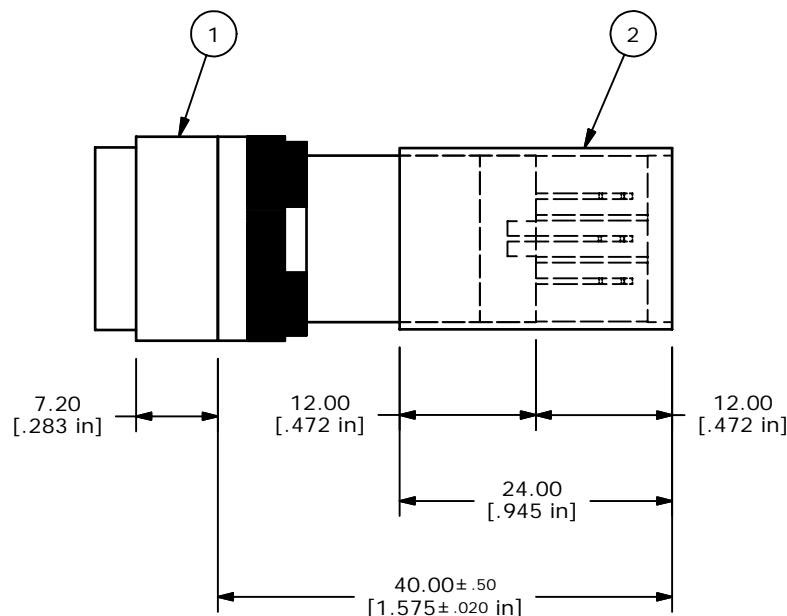
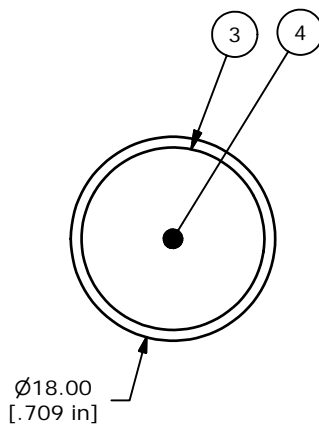
ITEM	QTY	PART NUMBER	DESCRIPTION
1	1	F040015	P16EER11
2	1	F051601	P16 PLASTIC TERMINAL PROTECTOR
3	1	F050104	50-001-04 ROUND TRANSPARENT RED LENS
4	1	F050412	50-004-12 110VAC RED NEON LAMP



PANEL MOUNTING



CONTACT CONFIGURATION



NOTE:

1. ALL DIMENSIONS IN MM [INCH]
2. GENERAL TOLERANCE: X.X=±0.4
X.XX=±0.25
3. TERMINAL NUMBERS FOR REF ONLY
4. MECHANICAL LIFE: 2,000,000 OPERATIONS
5. INSULATION RESISTANCE: 1,000 MILLI-OHM MIN.
6. OPERATING TEMP.: -25°C to 55°C
- ▲ 7. LAMP VOLTAGE: 110VAC NEON LAMP (RED)
8. ▲ DENOTES CRITICAL PARAMETER.
9. 2002/95/EC (ROHS) COMPLIANT
10. PACKAGE: BOX/20 PIECES PER



A	17442	RELEASED FOR PRODUCTION	7/6/07	TN
REV	PCR NO	DESCRIPTION	DATE	BY

TITLE P16EER11FREDRED				
SCALE	DATE	DR	DWG	REV
2:1	7/6/2007	TN	XF0728P	A

THE INFORMATION CONTAINED IN THIS DOCUMENT IS PROPRIETARY TO E-SWITCH AND IS NOT TO BE COPIED OR TRANSFERRED