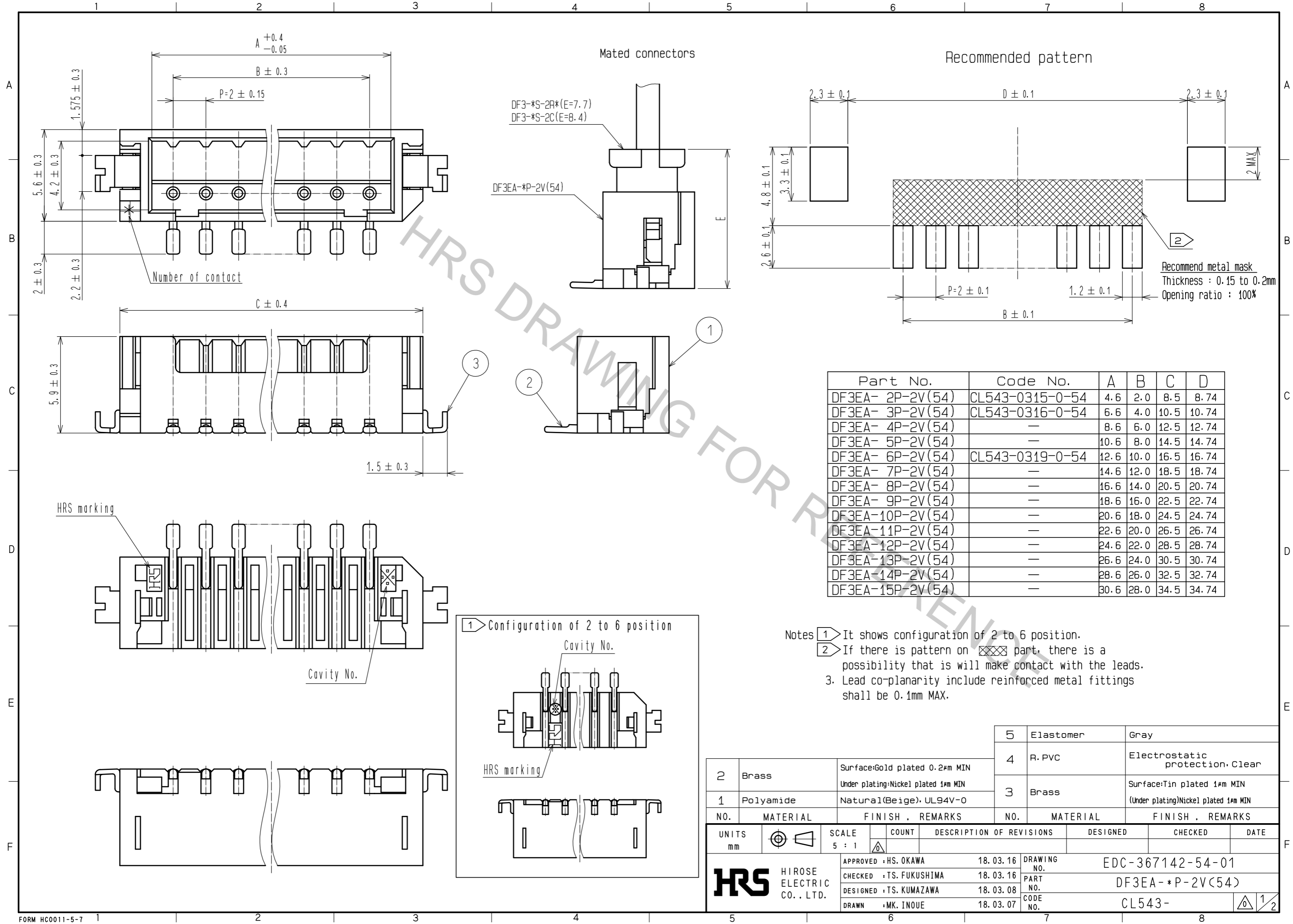


Aug.1.2018 Copyright 2018 HIROSE ELECTRIC CO., LTD. All Rights Reserved.  
 In case that the application demands a high level of reliability, such as automotive,  
 please contact a company representative for further information.



| Part No.         | Code No.        | A    | B    | C    | D     |
|------------------|-----------------|------|------|------|-------|
| DF3EA- 2P-2V(54) | CL543-0315-0-54 | 4.6  | 2.0  | 8.5  | 8.74  |
| DF3EA- 3P-2V(54) | CL543-0316-0-54 | 6.6  | 4.0  | 10.5 | 10.74 |
| DF3EA- 4P-2V(54) | —               | 8.6  | 6.0  | 12.5 | 12.74 |
| DF3EA- 5P-2V(54) | —               | 10.6 | 8.0  | 14.5 | 14.74 |
| DF3EA- 6P-2V(54) | CL543-0319-0-54 | 12.6 | 10.0 | 16.5 | 16.74 |
| DF3EA- 7P-2V(54) | —               | 14.6 | 12.0 | 18.5 | 18.74 |
| DF3EA- 8P-2V(54) | —               | 16.6 | 14.0 | 20.5 | 20.74 |
| DF3EA- 9P-2V(54) | —               | 18.6 | 16.0 | 22.5 | 22.74 |
| DF3EA-10P-2V(54) | —               | 20.6 | 18.0 | 24.5 | 24.74 |
| DF3EA-11P-2V(54) | —               | 22.6 | 20.0 | 26.5 | 26.74 |
| DF3EA-12P-2V(54) | —               | 24.6 | 22.0 | 28.5 | 28.74 |
| DF3EA-13P-2V(54) | —               | 26.6 | 24.0 | 30.5 | 30.74 |
| DF3EA-14P-2V(54) | —               | 28.6 | 26.0 | 32.5 | 32.74 |
| DF3EA-15P-2V(54) | —               | 30.6 | 28.0 | 34.5 | 34.74 |

- Notes
- 1 It shows configuration of 2 to 6 position.
  - 2 If there is pattern on part, there is a possibility that it will make contact with the leads.
  - 3. Lead co-planarity include reinforced metal fittings shall be 0.1mm MAX.

| NO. | MATERIAL  | FINISH .   | REMARKS | NO. | MATERIAL  | FINISH . | REMARKS  |
|-----|-----------|--|---------|-----|-----------|----------|--|
| 2   | Brass     | Surface:Gold plated 0.2µm MIN<br>Under plating:Nickel plated 1µm MIN |         | 5   | Elastomer |          | Gray   |
| 1   | Polyamide | Natural(Beige), UL94V-0  |         | 4   | R. PVC    |          | Electrostatic protection. Clear                                    |
|     |           |  |         | 3   | Brass     |          | Surface:Tin plated 1µm MIN<br>(Under plating)Nickel plated 1µm MIN |

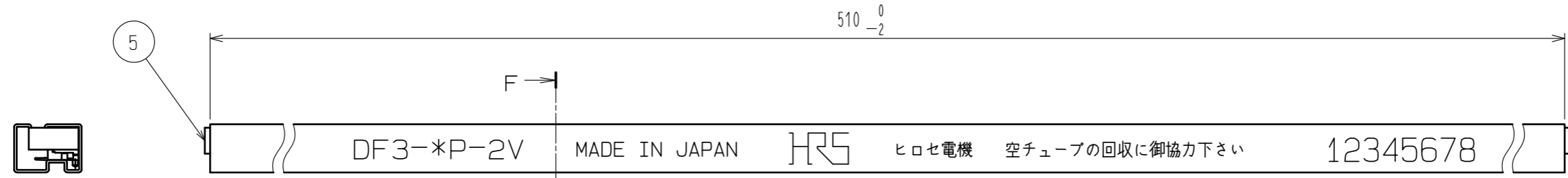
  

| UNITS | SCALE | COUNT | DESCRIPTION OF REVISIONS | DESIGNED | CHECKED | DATE |
|-------|-------|-------|--------------------------|----------|---------|------|
| mm    | 5 : 1 | △     |                          |          |         |      |

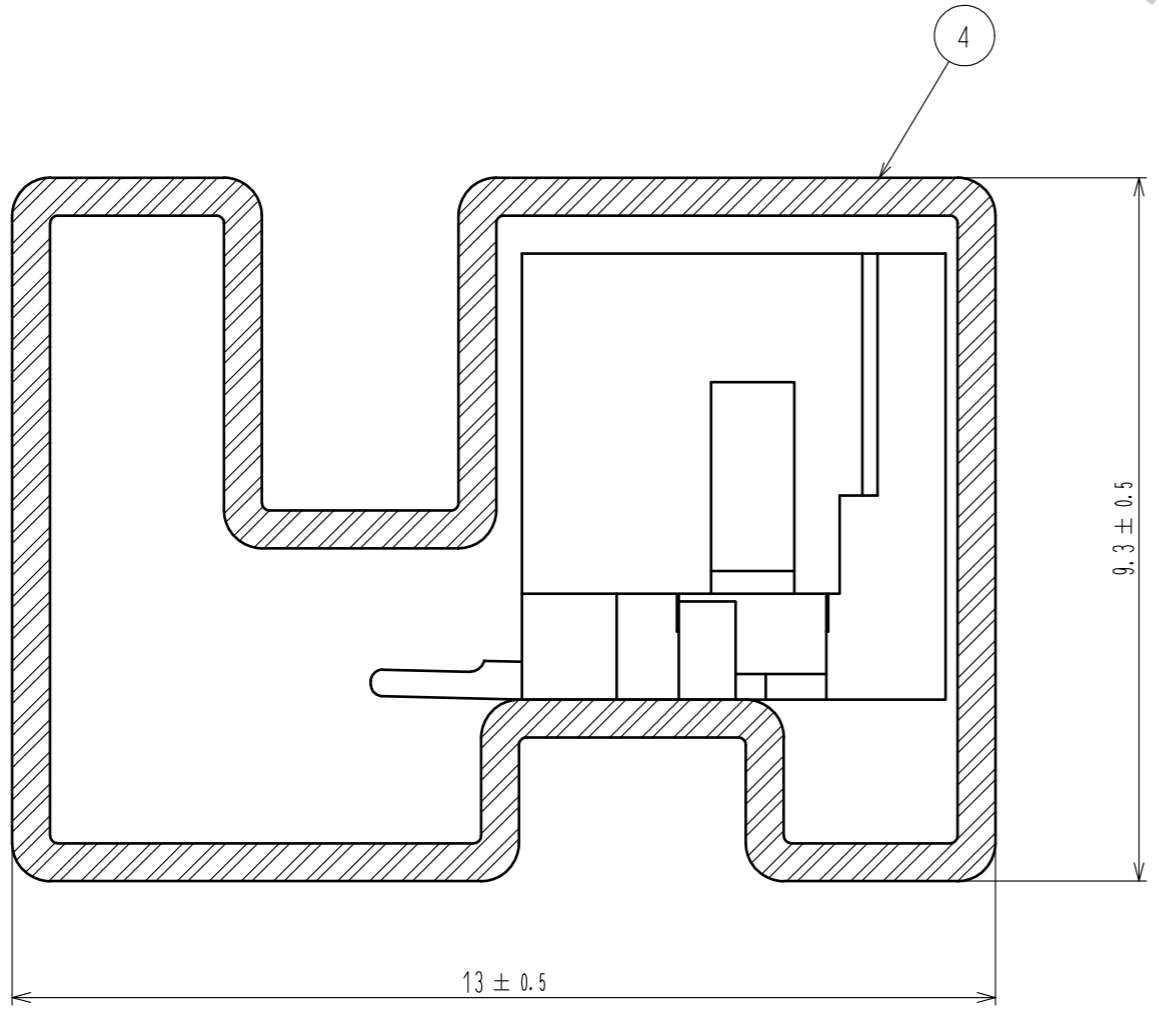
|                         |          |             |                  |
|-------------------------|----------|-------------|------------------|
| APPROVED : HS. OKAWA    | 18.03.16 | DRAWING NO. | EDC-367142-54-01 |
| CHECKED : TS. FUKUSHIMA | 18.03.16 | PART NO.    | DF3EA-*P-2V(54)  |
| DESIGNED : TS. KUMAZAWA | 18.03.08 | CODE NO.    | CL543-           |
| DRAWN : MK. INOUE       | 18.03.07 |             |                  |

Aug.1.2018 Copyright 2018 HIROSE ELECTRIC CO., LTD. All Rights Reserved.  
 In case that the application demands a high level of reliability, such as automotive,  
 please contact a company representative for further information.



Notes 4. Number of connectors per a magazine case shall be in accordance with the list.  
 5. These connectors shall be on sated in accordance with the multiple quantity on the list.

F-F (10:1)



| Part No.         | Code No.        | Number of connectors |
|------------------|-----------------|----------------------|
| DF3EA- 2P-2V(54) | CL543-0315-0-54 | 41                   |
| DF3EA- 3P-2V(54) | CL543-0316-0-54 | 34                   |
| DF3EA- 4P-2V(54) | —               | 30                   |
| DF3EA- 5P-2V(54) | —               | 26                   |
| DF3EA- 6P-2V(54) | CL543-0319-0-54 | 23                   |
| DF3EA- 7P-2V(54) | —               | 21                   |
| DF3EA- 8P-2V(54) | —               | 19                   |
| DF3EA- 9P-2V(54) | —               | 18                   |
| DF3EA-10P-2V(54) | —               | 17                   |
| DF3EA-11P-2V(54) | —               | 15                   |
| DF3EA-12P-2V(54) | —               | 14                   |
| DF3EA-13P-2V(54) | —               | 14                   |
| DF3EA-14P-2V(54) | —               | 13                   |
| DF3EA-15P-2V(54) | —               | 12                   |

|            |             |                  |
|------------|-------------|------------------|
| <b>HRS</b> | DRAWING NO. | EDC-367142-54-01 |
|            | PART NO.    | DF3EA-*P-2V(54)  |
|            | CODE NO.    | CL543-           |

2/2