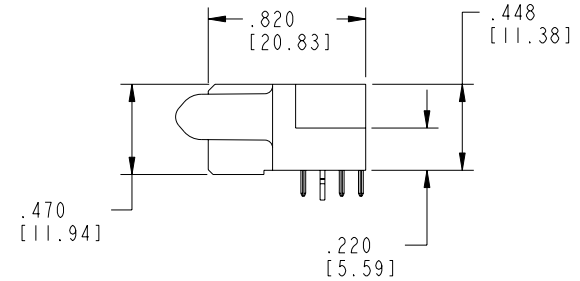
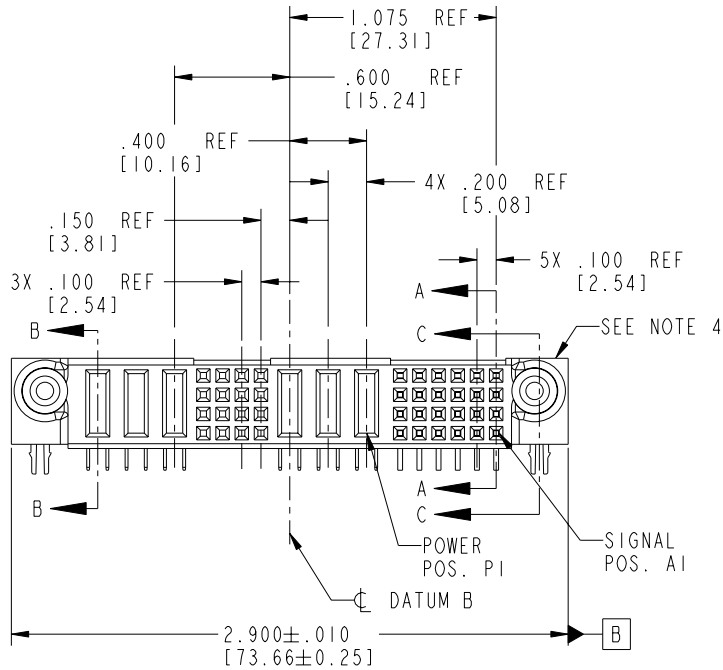


Tous droits strictement réservés. Reproduction ou communication a des tiers interdite sous quelque forme que ce soit sans autorisation écrite du propriétaire. Propriété de c FCI. Droits de reproduction FCI.

FCI

All rights strictly reserved. Reproduction or issue to third parties in any form whatever is not permitted without written authority from the proprietor. Property of FCI. Copyright FCI.

PRODUCT NO. 51915-037_- NOTE: ③	ROWS DCBA	POWER			SIG.			POWER			SIGNAL					E1		
		E2	P6	P5	P4	10	9	8	7	P3	P2	P1	6	5	4		3	2
			PA	PA	PA	XXXXXX	XXXXXX	XXXXXX	XXXXXX	PA	PA	PA	HHHHHH	HHHHHH	HHHHHH	HHHHHH	HHHHHH	
			PA	PA	PA	XXXXXX	XXXXXX	XXXXXX	XXXXXX	PA	PA	PA	GGGGGG	GGGGGG	GGGGGG	GGGGGG	GGGGGG	
			PA	PA	PA	XXXXXX	XXXXXX	XXXXXX	XXXXXX	PA	PA	PA	EEEEEE	EEEEEE	EEEEEE	EEEEEE	EEEEEE	



CODE	DIM "M" MATING LENGTH	CONTACT TYPE
E	N/A [N/A]	SIGNAL
F	N/A [N/A]	SIGNAL
G	N/A [N/A]	SIGNAL
H	N/A [N/A]	SIGNAL
PA	.042 [1.07]	POWER
HA	N/A [N/A]	HOLD-DOWN
X	OMITTED	OMITTED

mat'l code SEE NOTE 2				tolerances unless otherwise specified				CUSTOMER		FCI www.fciconnect.com	
ltr	ecn no.	dr	date	linear	.XX±.01/0.X±0.3			COPY		title 24S + 3P + 16S + 3P	
A	V03-1199	TAB	11/06/03		.XXX±.005/0.XXX±0.13			projection		R/A SOLDER RECEPTACLE	
B	DG05-0260	SJ	08/01/05		.XXX±.0020/0.XXX±0.051					product family PwrBlade code 213	
				angles	0°±2°			INCH/MM		size dwg no 51915-037 sheet 1 of 4	
				dr	T. BRUNGARD	11/06/03		scale 1:1			
				engr	M. GRAY	11/06/03					
				chr	M. GRAY	11/06/03					
				appd	M. GRAY	11/06/03					
sheet index		revision sheet		B	B	B	B				
				1	2	3	4				

1 | 2

Pro/E

3 |

cage code 22526

4

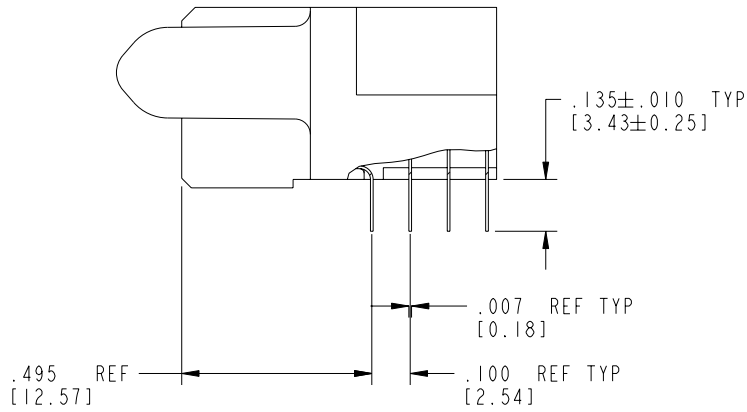
Tous droits strictement réservés. Reproduction ou communication a des tiers interdite sous quelque forme que ce soit sans autorisation écrite du propriétaire. Propriété de c FCI. Droits de reproduction FCI.

A **FCI**

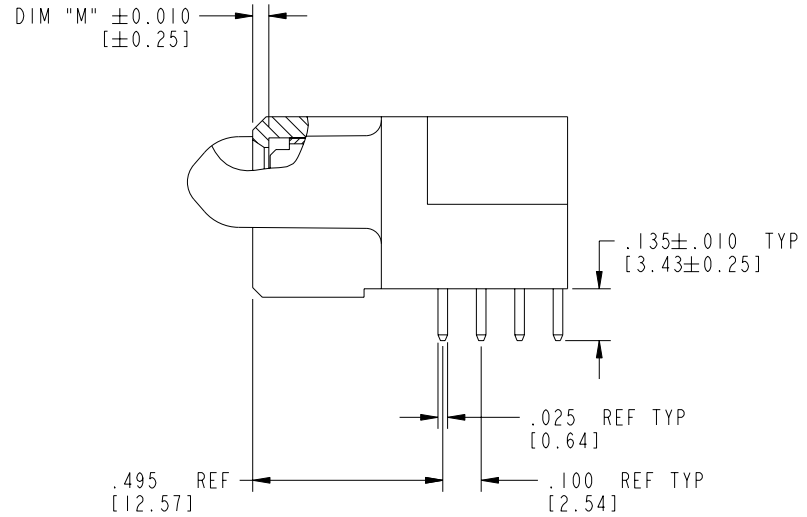
All rights strictly reserved. Reproduction or issue to third parties in any form whatever is not permitted without written authority from the proprietor. Property of FCI. Copyright FCI.

B

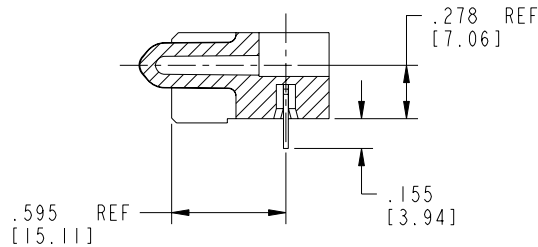
PRODUCT NUMBER
51915-037--
NOTE: ③



BROKEN-OUT SECTION A-A
SCALE 2:1



BROKEN-OUT SECTION B-B
SCALE 2:1



SECTION C-C

mat'l code				SEE NOTE 2		tolerances unless otherwise specified		CUSTOMER		A FCI www.fciconnect.com	
ltr	ecr no.	dr	date	linear	.XX±.01/0.X±0.3		COPY		title 24S + 3P + 16S + 3P R/A SOLDER RECEPTACLE		
B					.XXX±.005/0.XXX±0.13		projection				
					angles	.XXXX±.0020/0.XXX±0.051		INCH/MM		product family PwrBlade code 213	
				0°±?		scale 1:1		size dwg no 51915-037 sheet 2 of 4			
				dr	T. BRUNGARD	11/06/03					
				enr	M. GRAY	11/06/03					
				chr	M. GRAY	11/06/03					
				appd	M. GRAY	11/06/03					
sheet index	revision sheet										

cage code 22526

Pro/E

PDM: Rev:B

STATUS: **Released**

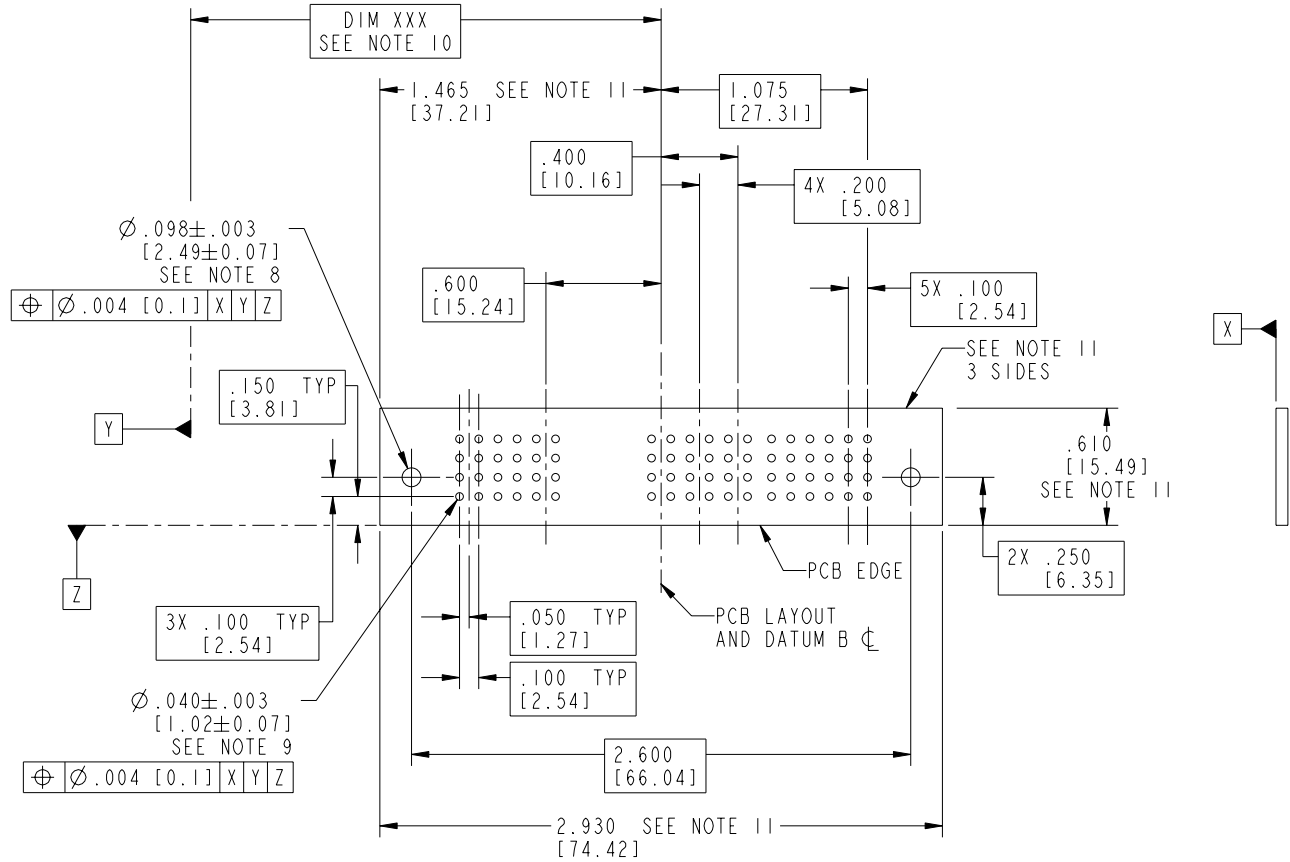
Printed: Dec 20, 2010

Tous droits strictement réservés. Reproduction ou communication o des tiers interdite sous quelque forme que ce soit sans autorisation écrite du propriétaire. Propriete de c FCI. Droits de reproduction FCI.

All rights strictly reserved. Reproduction or issue to third parties in any form whatever is not permitted without written authority from the proprietor. Property of FCI. Copyright FCI.



PRODUCT NUMBER
51915-037--
NOTE: ③



mat'l code				SEE NOTE 2		tolerances unless otherwise specified		CUSTOMER		 www.fciconnect.com	
ltr	ecn no.	dr	date	linear	.XX±.01/0.X±0.3		COPY		title 24S + 3P + 16S + 3P R/A SOLDER RECEPTACLE		
B					.XXX±.005/0.XX±0.13		projection				
					angles	.XXX±.0020/0.XXX±0.051		 INCH/MM		PwrBlade	
		dr	T. BRUNGARD			0°±°	scale		size		sheet
		enrg	M. GRAY				1:1		dwg no		3 of 4
		chr	M. GRAY						A		
		appd	M. GRAY						51915-037		
sheet index		revision sheet									

cage code 22526

Pro/E

PDM: Rev:B

STATUS: Released

Printed: Dec 20, 2010

Tous droits strictement réservés. Reproduction ou communication a des tiers interdite sous quelque forme que ce soit sans autorisation écrite du propriétaire. Propriété de c FCI. Droits de reproduction FCI.



All rights strictly reserved. Reproduction or issue to third parties in any form whatever is not permitted without written authority from the proprietor. Property of FCI. Copyright FCI.

1 | 2

3 |

4

PRODUCT NUMBER

51915-037--
NOTE: ③

NOTES:

1. DIMENSIONS AND TOLERANCES ARE IN ACCORDANCE WITH ASME Y14.5M, 1994 UNLESS OTHERWISE SPECIFIED.

CONNECTOR NOTES:

②. HOUSING MATERIAL: UL 94 V-0 GLASS FILLED
HIGH-TEMP THERMOPLASTIC
POWER CONTACT MATERIAL: COPPER ALLOY
SIGNAL PIN MATERIAL: COPPER ALLOY

3. PLATING:
51915-037 Singal Pin: 30u"/0.76um Au OVER 50u"/1.27um Ni ON THE CONTACT AREA,
AND 100u"/2.54um SnPb PLATING OVER 50u"/1.27um Ni ON THE TERMINATION SECTION.
Power Pin: 30u"/0.76um Au OVER 50u"/1.27um Ni ON THE CONTACT AREA,
AND 100u"/2.54um SnPb PLATING OVER 50u"/1.27um Ni ON THE TERMINATION SECTION.
51915-037LF Singal Pin: 30u"/0.76um Au OVER 50u"/1.27um Ni ON THE CONTACT AREA,
AND 78u"/2.00um Sn PLATING OVER 50u"/1.27um Ni ON THE TERMINATION SECTION.
Power Pin: 30u"/0.76um Au OVER 50u"/1.27um Ni ON THE CONTACT AREA,
AND 78u"/2.00um Sn PLATING OVER 50u"/1.27um Ni ON THE TERMINATION SECTION.

PART NUMBER 51915-037LF MEETS EUROPEAN UNION DIRECTIVE AND OTHER COUNTRY REGULATIONS AS DESCRIBED IN GS-22-008.

THE HOUSING WILL WITHSTAND EXPOSURE TO 260° PEAK TEMPERATURE FOR 10 SECONDS IN A WAVE SOLDER APPLICATION WITH A CIRCUIT BOARD.

④. MANUFACTURER'S NAME, P/N, AND DATE CODE TO APPEAR ON THIS SURFACE.

5. PRODUCT SPECIFICATION GS-12-149.
APPLICATION SPECIFICATION BUS-20-067.

6. PACKAGED IN TRAYS.

PCB NOTES:

7. ALL HOLE DIAMETERS ARE FINISHED HOLE SIZE.

⑧. MOUNTING HOLES, WHERE APPLICABLE, ARE UNPLATED.

⑨. $\varnothing .0453 \pm .0010$ [1.151 \pm 0.025] DRILLED HOLES PLATED WITH
.0003 [0.008] MIN SnPb OVER .001 [0.03]
TO .003 [0.08] Cu PLATING TO ACHIEVE
 $\varnothing .040 \pm .003$ [1.02 \pm .07] HOLE.

⑩. "DIM XXX" TO BE DETERMINED BY THE CUSTOMER.

⑪. CONNECTOR KEEP-OUT ZONE.

mat'l code				SEE NOTE 2		tolerances unless otherwise specified		CUSTOMER		 www.fciconnect.com	
ltr	ecn no.	dr	date	linear	.XX±.01/0.X±0.3		COPY		 title 24S + 3P + 16S + 3P R/A SOLDER RECEPTACLE		
B					.XXX±.005/0.XX±0.13		projection				
					angles	.XXX±.0020/0.XXX±0.051		 INCH/MM		product family PwrBlade code 213	
				dr		T. BRUNGARD	11/06/03	scale 1:1		size 51915-037 sheet 4 of 4	
				enr	M. GRAY	11/06/03					
				chr	M. GRAY	11/06/03					
				appd	M. GRAY	11/06/03					
sheet index	revision sheet										

1 | 2

Pro/E

3 |

cage code 22526

4